

# THOR K235

## DOUBLE SCISSOR



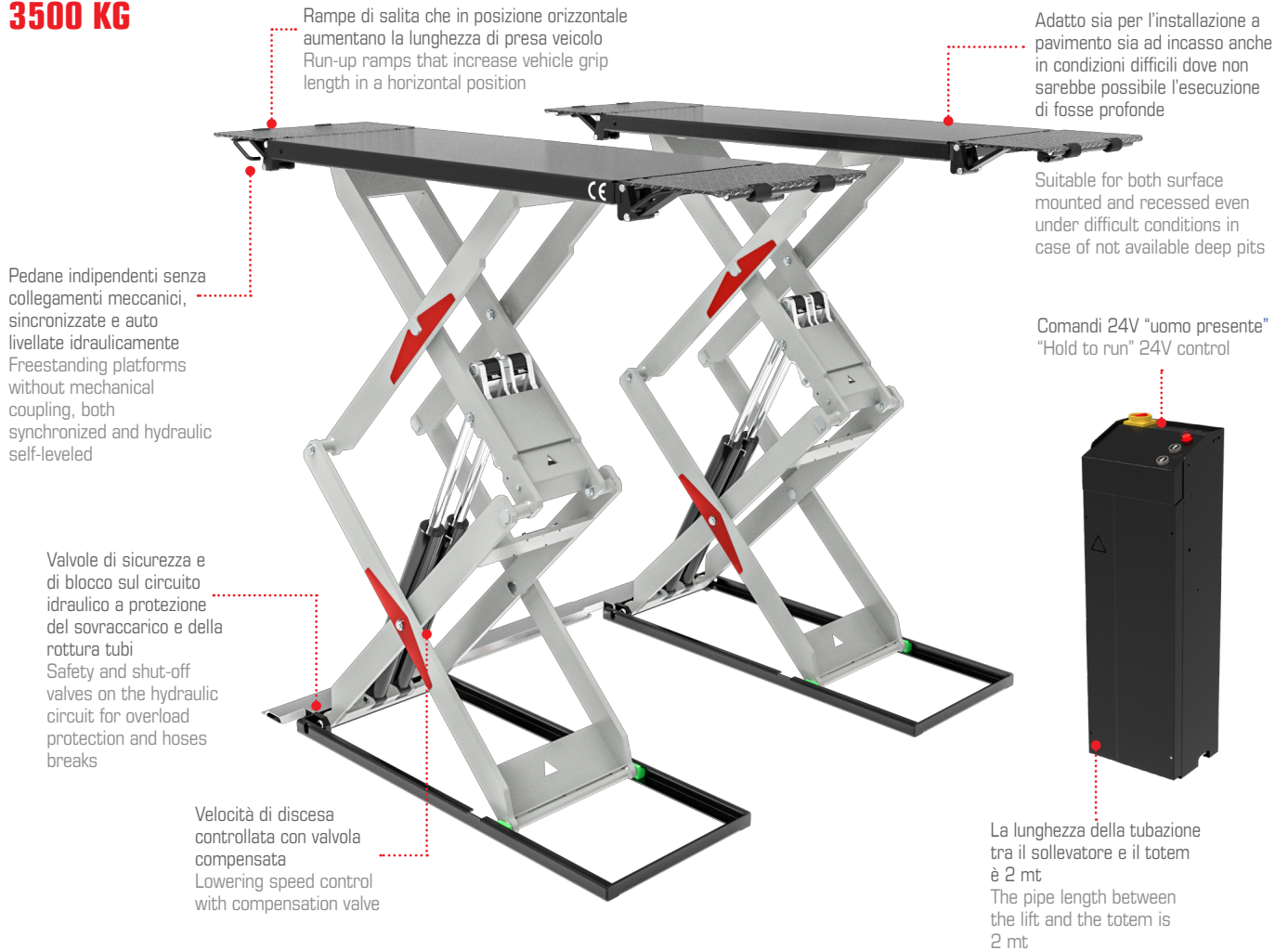
Sollevatore elettroidraulico extra basso con altezza minima da terra di soli 105 mm, a pedane indipendenti, con flap applicati alle pedane che permettono di avere una lunghezza di presa minimo 1480 / max 2120 mm

Electro-hydraulic extra low lift with min. height 105 mm, with freestanding platforms, equipped with extensions which allows for a grip length of min 1480 mm and max 2120 mm.

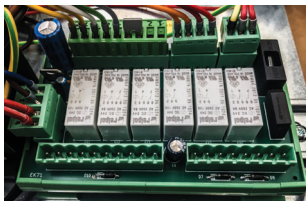
EK235.LV8.01

### SOLLEVATORE A PROFILO SUPER RIBASSATO PER AUTO E VEICOLI COMMERCIALI LEGGERI EXTRA LOW PROFILE LIFT FOR CARS AND LIGHT DUTY VEHICLES

**3500 KG**



### STANDARD EQUIPMENT



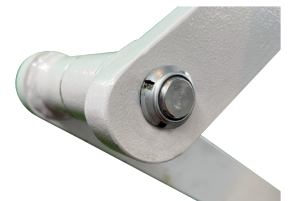
Scheda di controllo elettronica  
Electronic PC board



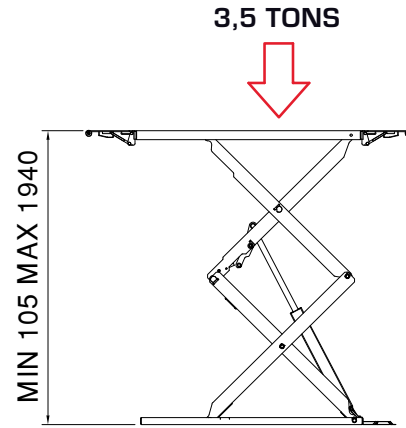
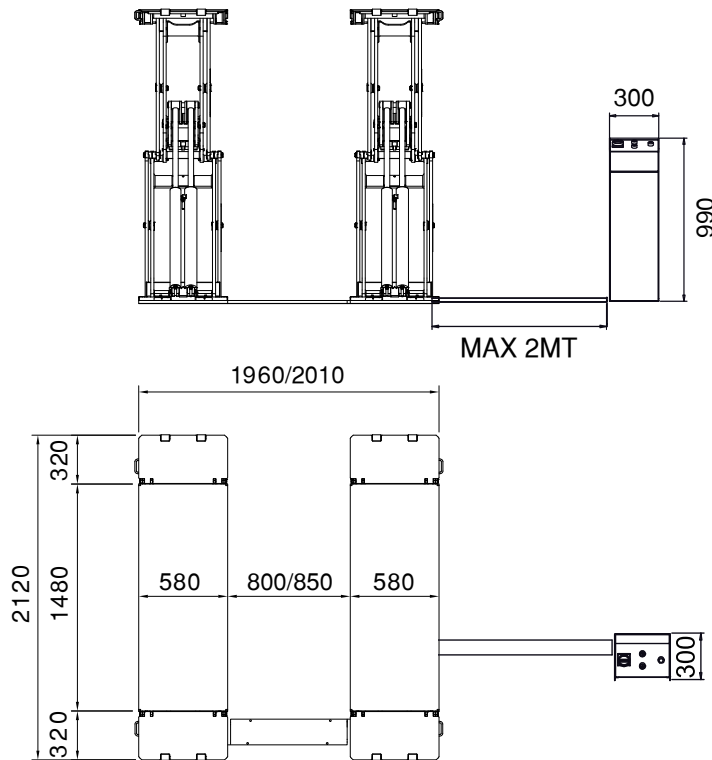
Micro Switch elettrico "salvapiedi" unito ad avvisatore acustico a protezione dell'ultima fase di discesa  
Foot protection electric Micro Switch with acoustic signal to protect the last lowering travel



Pattini in polizene autolubrificante ad alto scorrimento  
High-sliding and self-lubricating polyethylene pads



Boccole autolubrificanti su tutti i perni di rotazione, senza manutenzione necessaria  
Self-lubricating bushings on each rotating pin, maintenance free



<b>Portata</b> Capacity	3500 kg
<b>Peso</b> Weight	750 kg
<b>Salita / Discesa</b> Lifting / Lowering	40 / 40 sec.
<b>Altezza di sollevamento</b> Lifting height	min. 105 mm max 1940 mm
<b>Motorizzazione</b> Power unit	2,2 Kw 400V 3Ph 50Hz

\* Motorizzazione monofase 230V 1ph 50Hz optional  
\* Optional single phase motorization 230V 1ph 50Hz.

## STANDARD EQUIPMENT



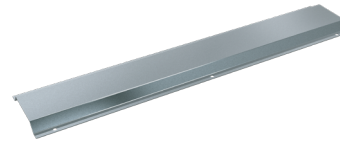
Doppio circuito idraulico ridondante composto da 4 pistoni, 2 per ogni pedana  
Double redundant hydraulic circuit with 4 pistons, 2 on each platform



Rampe di salita che in posizione orizzontale aumentano la lunghezza di presa veicolo  
Run-up ramps that increase vehicle grip length in a horizontal position

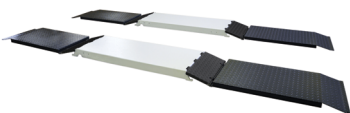


Kit di 4 tamponi in gomma H40 mm  
4 rubber pads kit H20 mm



Carter copritubi in lamiera zincata  
Hoses covers made of galvanized steel

## OPTION



### EK300.LR01

Rampe lunghe per veicoli racing / super sportivi  
Run-up ramps for racing / super sport vehicles



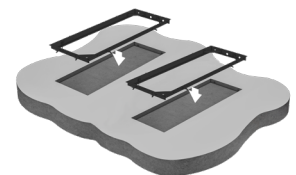
### EK36E.CB01

Set di traverse per VAN e SUV  
Corssbars set for VAN and SUV



### EK300.RB40 H20 mm EK300.RB60 H60 mm

Kit 4 tamponi in gomma  
Kit of 4 rubber pads



### EK235.KI01

Kit telaio a doppia vasca per incasso  
Double tank frame kit for recessed installation