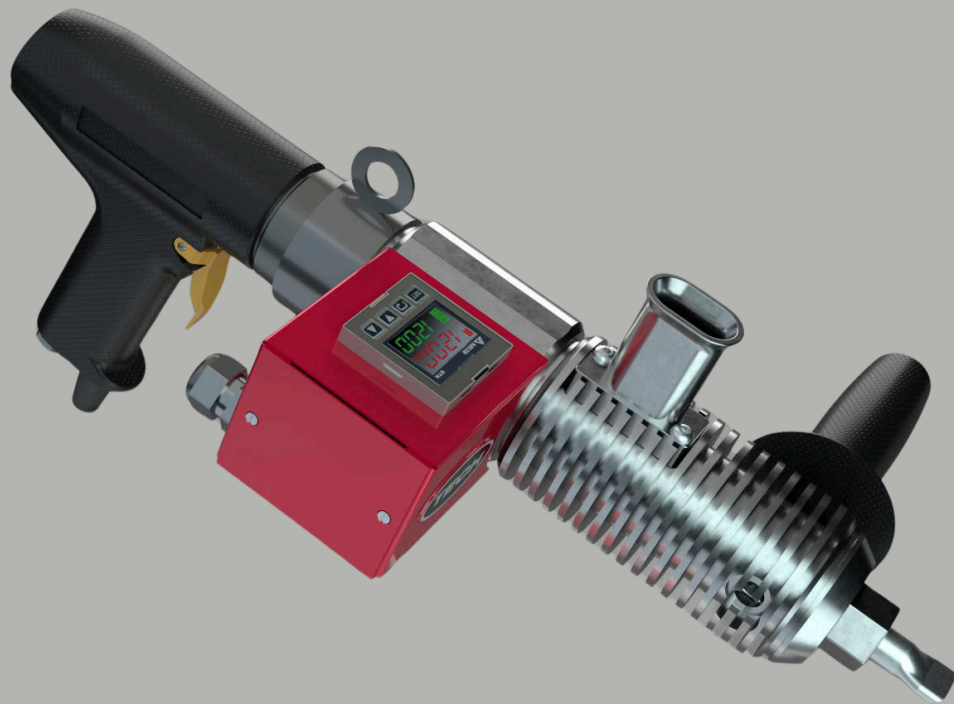




e-line

TECH E-LINE EXTRUDER GUN – MODEL 685

Electronic control. Engineered for performance.



TECH proudly launches the e-line: a new family of digitally enhanced repair tools developed for tire and rubber professionals.

Key Features of the TECH e-line 685

- **Digital Thermostat**
Stable, precise temperature control (+/- 5° C)
- **No Premature Vulcanization**
Easier cleaning after use, no rubber residue
- **Optimized Flow**
Consistent rubber extrusion in tough repair jobs
- **Lower Energy Consumption**
Efficient thermal regulation = smart performance
- **Redesigned Entry Port**
Field-tested by repair professionals
- **Dual Voltage**
Operates on 220V / 110V
- **Rubber Output: 18 kg/h**
Productivity built into every detail
- **CE certified**
Meets EU safety, health, and environmental requirements.

The 685E is just the beginning.

TECH e-line is built for the future of extrusion.
Stay tuned for additional sizes and models.



e-line

About the TECH e-line

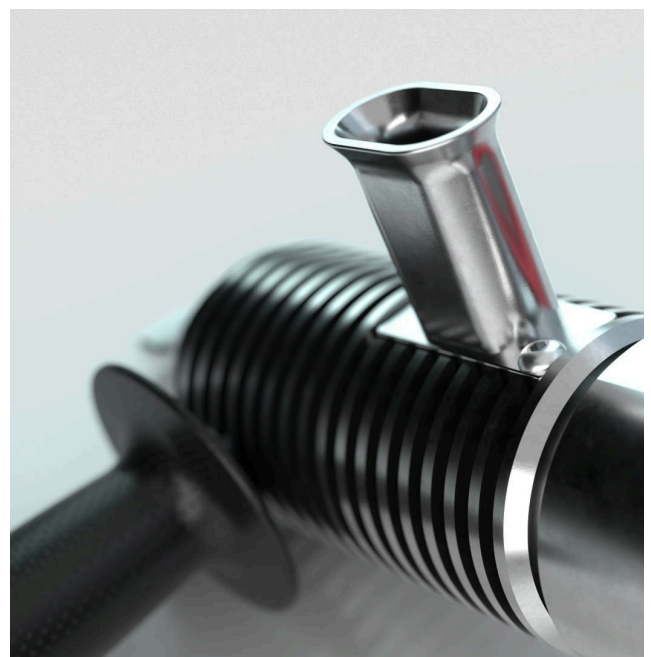
The **TECH e-line** represents a new generation of tire and rubber repair tools — combining **digital innovation, practical functionality, and technician insight.**

The **Model 685** is the first release in this family.

Each tool in the e-line is designed to meet the evolving needs of the repair industry through **enhanced control, efficiency, and ease of use.**

More sizes and configurations are already in development.

Parameter	Value
Model	685
Weight	5 kg
Drill Power	750 W
Electric Power	350 W
Voltage	220V / 110V
Max Temperature	120°C
Rubber Output	18 kg/hour



To place your order use the code **685E.*