



Automotive Equipment

Spare parts

IT

EN

# SOLLEVATORE VEHICLE LIFT TECO 320

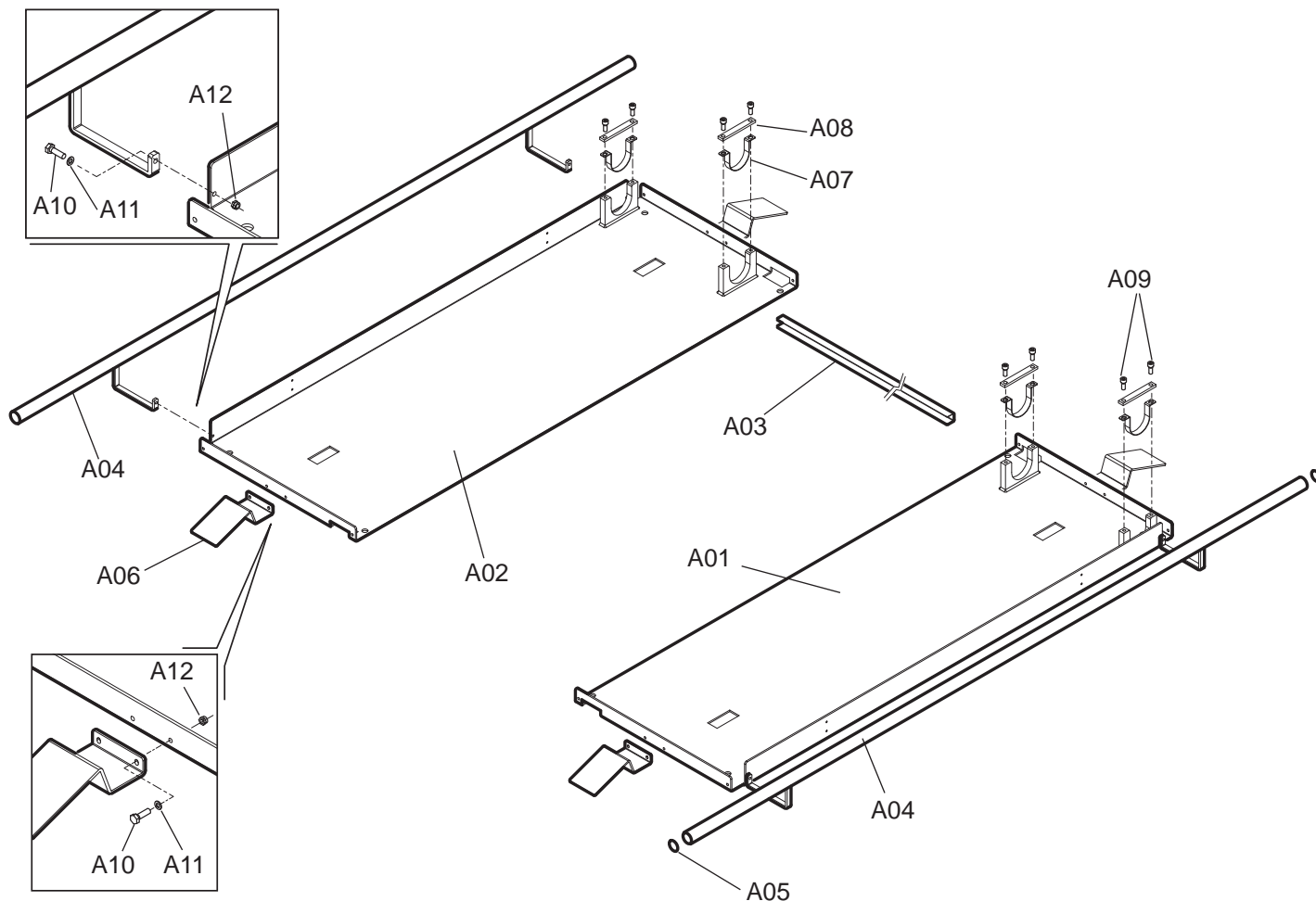
Version 3.3 - September 2016

*VALIDO DA MATRICOLA:*

*STARTING FROM SERIAL NUMBER:*

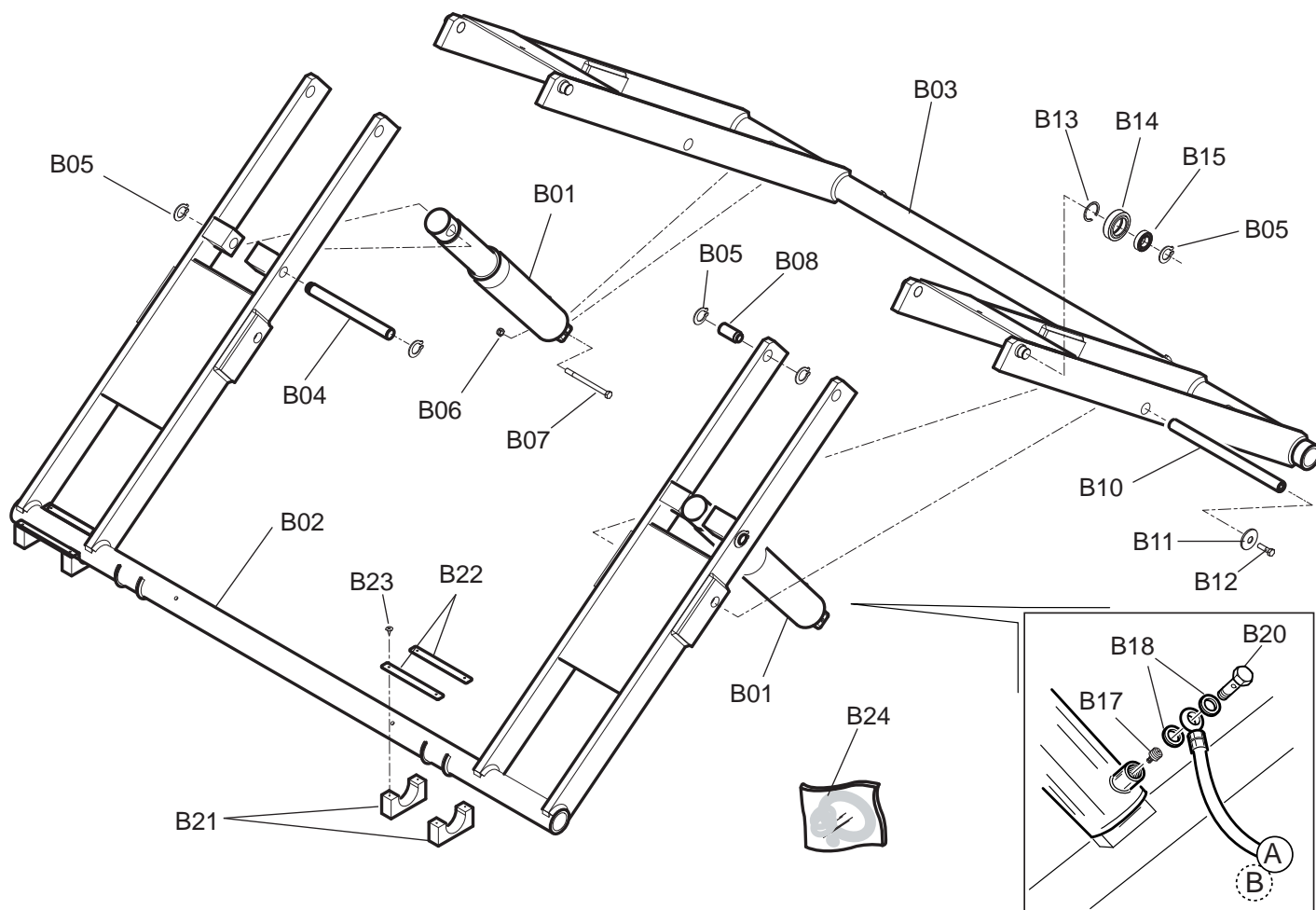
**141260310**





RS	REF	COD.	DESCRIZIONE	DESCRIPTION
	A01	4-603360/90	BASAMENTO DX	RIGHT BASEPLATE
	A02	4-603361/90	BASAMENTO SX	LEFT BASEPLATE
	A03	4-603363-1	LAMIERA PROTEZIONE TUBI	HOSE PROTECTION SHEET
	A04	4-603368-1	TUBO PROTEZIONE PIEDI	FEET PROTECTION BAR
	A05	3-90636	TAPPO	PLUG
	A06	4-603365-1	LAMIERA SCORRIMENTO RAMPA	RAMP SLIDING PLATE
	A07	4-603362-1	LAMIERA SCORRIMENTO TUBO	HOSE SLIDING PLATE
	A08	4-603357-1	LAMIERA CHIUSURA SUPPORTO	SUPPORT CLOSING PLATE
	A09	2-00320	VITE TCEI M8x20	SCREW TCEI M8x20
	A10	2-00297	VITE TCEI M5x16	SCREW TCEI M5x16
	A11	2-00210	RONDELLA D. 5	WASHER D. 5
	A12	2-71524	DADO ES. AUTOBL. M5	SELF LOCKING NUT M5

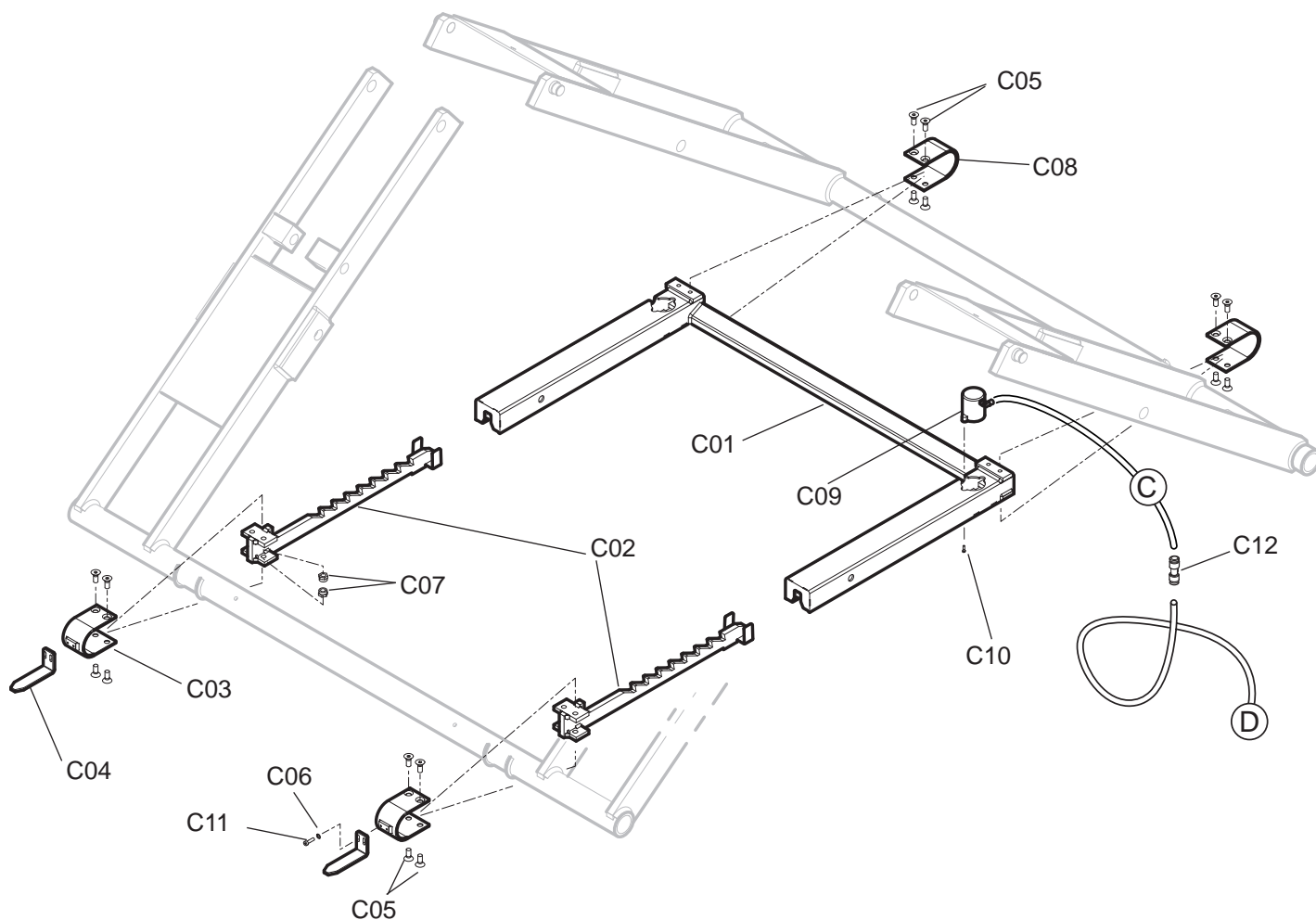
**RS= RICAMBI CONSIGLIATI / RECOMMENDED SPARES**
**AGGIORNAMENTI / UPDATE:**



RS	REF	COD.	DESCRIZIONE	DESCRIPTION
	(#1) B01	4-603222	CILINDRO SOLLEVATORE	LIFTING CYLINDER
	B01	4-603222A	CILINDRO SOLLEVATORE	LIFTING CYLINDER
	B01A	5-601126	CILINDRO + VALVOLA PARACADUTE	LIFTING CYLINDER + PARACHUTE VALVE
	B02	4-603296/90	BIELLE INTERNE	INTERNAL CONNECTING RODS
	B03	4-603289/90	BIELLE ESTERNE	EXTERNAL CONNECTING RODS
	B04	4-603390	PERNO CILINDRO	CYLINDER PIN
	B05	2-00032	ANELLO EL. D. 25	ELASTIC RING D.15
	B06	2-01137	DADO ES. AUTOBL. M8	SELF LOCKING NUT M8
	B07	2-02647	VITE TCEI M8X80	SCREW TCEI M8X80
	B08	4-603391	PERNO FULCRO BIELLE	CONNECTING RODS FULCRUM PIN
	B10	4-603389	PERNO CENTRALE	CENTRAL PIN
	B11	2-02947	ROSETTA D. 10X40	WASHER D. 10X40
	B12	2-02660	VITE TE M10X16	SCREW TE M10X16
	B13	2-02104	ANELLO EL. D. 47	ELASTIC RING D. 47
	B14	4-603364-1	RULLO	ROLLER
	B15	2-02934	CUSCINETTO A SFERE	BALL BEARING
<b>RS</b>	B17	4-603417	VALVOLA PARACADUTE	PARACHUTE VALVE
	B18	86500153	BONDED SEAL RG1/4	BONDED SEAL RG1/4
	B20	4-603245	VITE CAVA GAS 1/4"	SCREW GAS 1/4"
	B21	4-603370	SCORREVOLE	SLIDING BLOCK
	B22	4-603371-1	PIATTO CHIUSURA SCORREVOLE	CLOSING PLATE
	B23	2-94134	VITE ATBIC D. 3,9X16	SCREW ATBIC D. 3,9x16
	(#1) B24	5-600680	KIT GUARNIZIONI CILINDRO	CYLINDER GASKETS KIT
<b>RS</b>	B24	5-600681	KIT GUARNIZIONI CILINDRO	CYLINDER GASKETS KIT
<b>RS</b>	A	4-603225	TUBO OLEODINAMICO L=2200	HYDRAULIC HOSE L=2200
<b>RS</b>	B	4-603226	TUBO OLEODINAMICO L=3600	HYDRAULIC HOSE L=3600

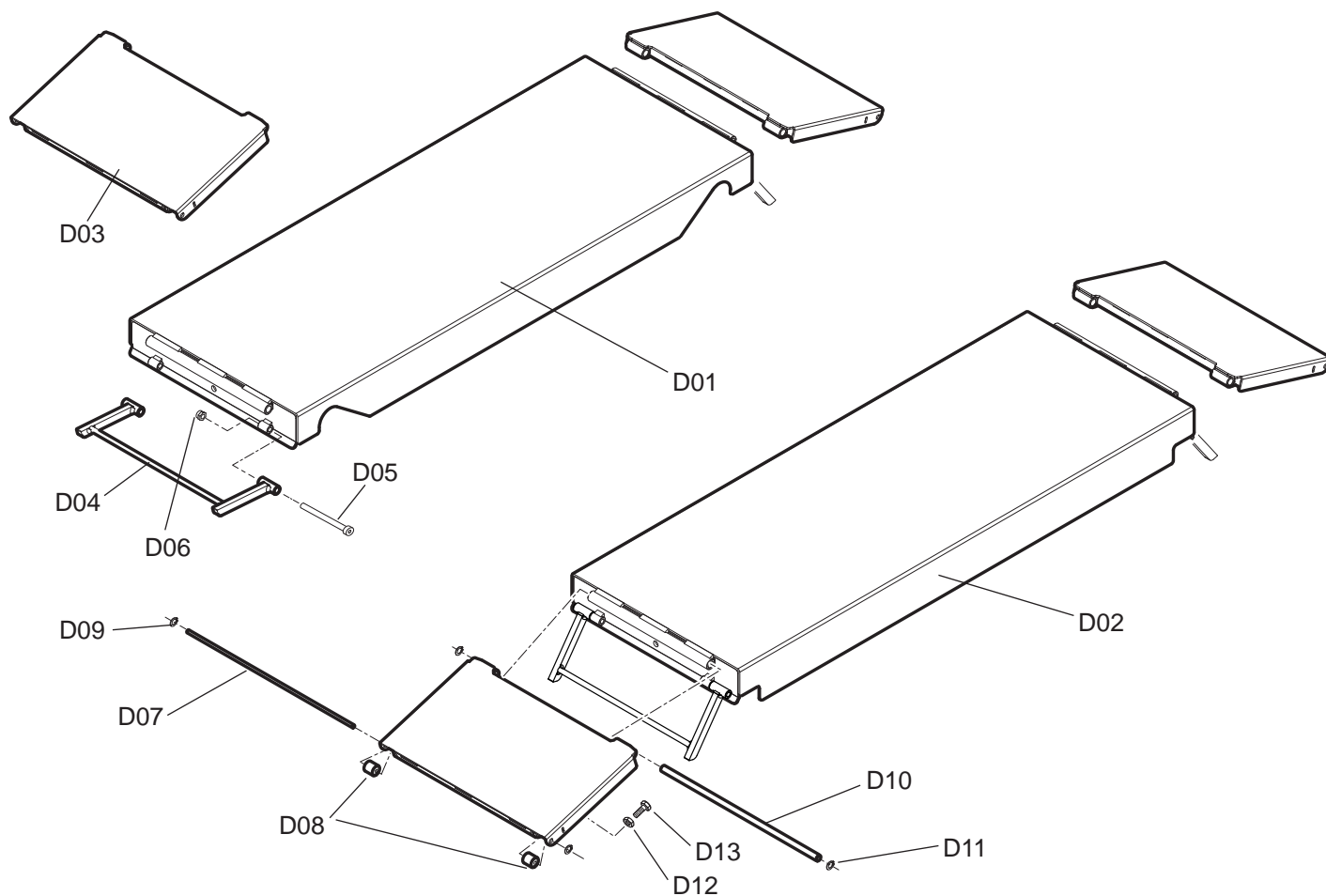
**AGGIORNAMENTI / UPDATE:**

(#1) fino a matricola / up to serial number 160361967



RS	REF	COD.	DESCRIZIONE	DESCRIPTION
	C01	4-603379/90	BARRA DI SICUREZZA SUPERIORE	UPPER SAFETY BAR
	C02	4-603383/90	BARRA DI SICUREZZA INFERIORE	LOWER SAFETY BAR
	C03	4-603387-1	COLLARE SICURA INFERIORE	LOWER SAFETY COLLAR
	C04	4-603388-1	LAMIERA ANTI-RIBALTAMENTO	ANTI-TILTING SHEET
	C05	2-03377	VITE TSPEI M10X30	SCREW TSPEI M10x30
	C06	2-00713	ROSETTA D. 5,5X15X1,6	WASHER D. 5,5x15x1,6
	C07	2-71525	DADO ES. AUTOBL. M10	SELF LOCKING NUT M10
	C08	4-603386-1	COLLARE SICURA SUPERIORE	UPPER SAFETY COLLAR
<b>RS</b>	C09	5-601122	CILINDRO PNEUMATICO	PNEUMATIC CYLINDER
	C10	2-00359	VITE TE M6X10	SCREW TE M6X10
	C11	2-01923	VITE TCEI M5X12	SCREW TCEI M5X12
	C12	3-00214	RACCPN -D- T4	UNION -D- T4
	C	4-603228	TUBO D. 4X2 L=1000	HOSE D. 4X2 L=1000
	D	4-603408	TUBO D. 4X2 L=2800	HOSE D. 4X2 L=2800

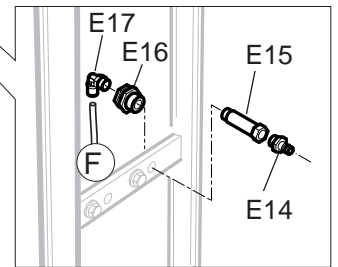
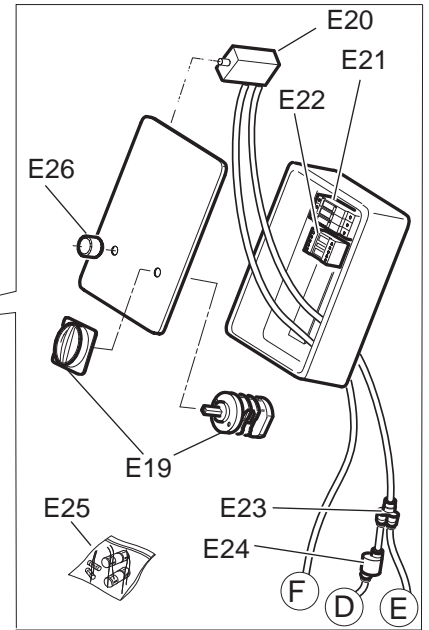
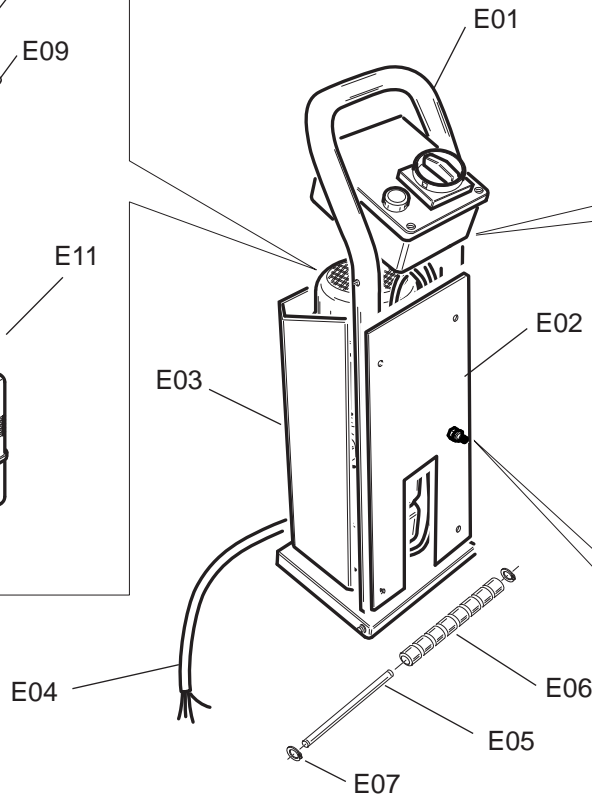
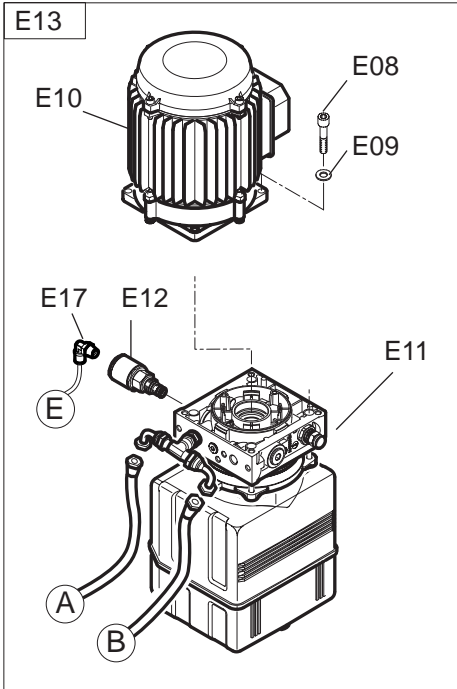
**RS= RICAMBI CONSIGLIATI / RECOMMENDED SPARES**
**AGGIORNAMENTI / UPDATE:**



RS	REF	COD.	DESCRIZIONE	DESCRIPTION
	D01	4-603343/**	PIANALE SUPERIORE SX	LEFT UPPER PLATFORM
	D02	4-603344/**	PIANALE SUPERIORE DX	RIGHT UPPER PLATFORM
	D03	4-603351/90	RAMPA BASCULANTE	TILTING RAMP
	D04	4-603356-1	BLOCCAGGIO RAMPA	RAMP LOCKING
	D05	2-94215	VITE TCEI M10X100	SCREW TCEI M10X100
	D06	2-71525	DADO ES. AUTOBL. M10	SELF LOCKING NUT M10
	D07	4-603352	PERNO LUNGO	LONG PIN
	D08	3-90673	RULLO	ROLLER
	D09	2-01012	ANELLO EL. D. 8	ELASTIC RING D. 8
	D10	4-603392	PERNO FULCRO RAMPA	RAMP FULCRUM PIN
	D11	2-01122	ANELLO EL. D. 15	ELASTIC RING D. 15
	D12	2-00156	DADO ES. M8	NUT M8
	D13	2-00373	VITE TE M8X20	SCREW TE M8X20

RS= RICAMBI CONSIGLIATI / RECOMMENDED SPARES

AGGIORNAMENTI / UPDATE:



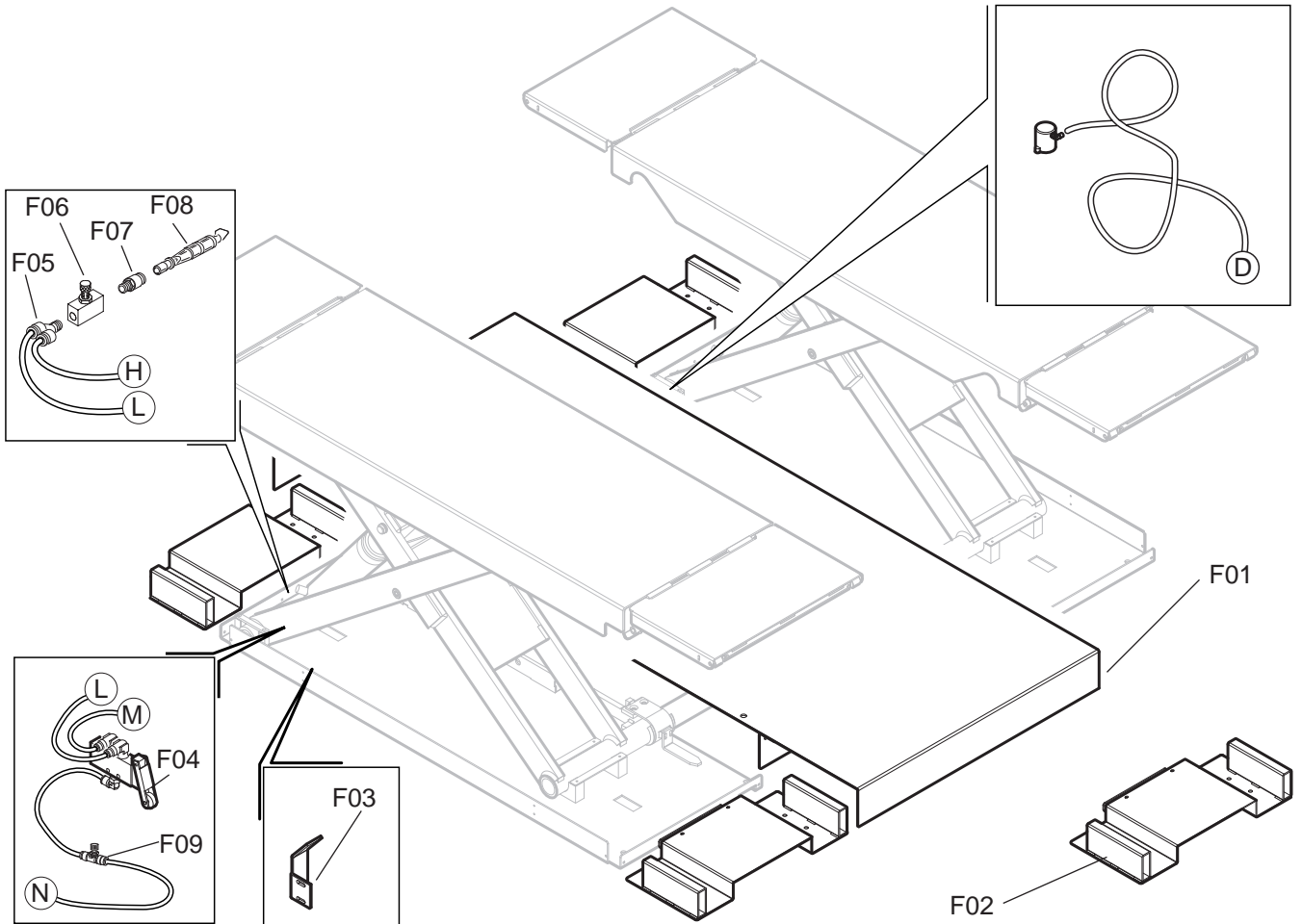
**TAV E****COLONNA COMANDI / CONTROL UNIT**

RS	REF	COD.	DESCRIZIONE	DESCRIPTION
	E01	4-603393/90	STRUTTURA COLONNA COMANDI	CONTROL UNIT BODY
	E02	4-603394/90	CARTER POSTERIORE	REAR COVER
	E03	4-603395/**	CARTER ANTERIORE	FRONT COVER
	E04	4-603413	CAVO ALIMENTAZIONE VERS. TRIFASE	THREE PHASE POWER SUPPLY CABLE
	E04	4-600240	CAVO ALIMENTAZIONE VERS. MONOFASE	SINGLE PHASE POWER SUPPLY CABLE
	E05	006510500	PERNO COLONNA COMANDI	CONTROL UNIT PIN
	E06	007902300	RULLO	ROLLER
	E07	2-00021	ANELLO EL. D.8	ELASTIC RING D. 8
	E08	2-71542	RONDELLA D. 8	WASHER D. 8
	E09	2-00320	VITE TCEI M8X20	SCREW M8X20
RS	E10	3-90643	MOTORE TRIFASE	3-PHASE MOTOR
RS	E10	3-03307	MOTORE 230/1/50 Hz	1-PHASE MOTOR
	E11	3-90644	CENTRALINA VERSIONE TRIFASE	THREE PHASE CONTROL UNIT
	E11	3-03308	CENTRALINA VERSIONE MONOFASE	SINGLE PHASE CONTROL UNIT
RS	E12	3-90368	VALVOLA COMANDO SCARICO	EXHAUST CONTROL VALVE
	E13	5-601106	GR. CENTRALINA+MOTORE TRIFASE	THREE PHASE CONTROL UNIT + MOTOR
	E13	5-600685	GR. CENTRALINA+MOTORE MONOFASE	SINGLE PHASE CONTROL UNIT + MOTOR
	E14	047500600	GIUNTO RAPIDO MASCHIO G1/4	QUICK COUPLING
	E15	3-00180	COLONNETTA G1/4F	SPACER
	E16	3-00172	RACC. PASSAPARETE M20x1,5-G1/4F	UNION
	E17	3-00052	RACCPN -LO-G1/4-T4	UNION -LO-G1/4-T4
RS	E19	045521300A	INTERRUTTORE	SWITCH
	E20	049803300	VALVOLA	VALVE
	E21	3-90639	PORTAFUSIBILI VERSIONE TRIFASE	THREE PHASE FUSES HOLDER
	E21	3-03309	PORTAFUSIBILI VERSIONE MONOFASE	SINGLE PHASE FUSES HOLDER
RS	E22	3-90640	TELERUTTORE VERSIONE TRIFASE	THREE PHASE CONTACTOR
RS	E22	3-03310	TELERUTTORE VERSIONE MONOFASE	SINGLE PHASE CONTACTOR
	E23	3-00238	RACCPN Y - T4	UNION Y - T4
	E24	3-90242	VALVOLA SCARICO RAPIDO T4	QUICK RELEASE VALVE T4
RS	E25	5-600696	KIT FUSIBILI 10A - versione TRIFASE	FUSES KIT 10A - 3Ph version
RS	E25	5-601280	KIT FUSIBILI 16A - versione MONOFASE	FUSES KIT 16A - 1Ph version
	E26	045521400	PULSANTE	BUTTON
RS	A	4-603225	TUBO OLEODINAMICO L=2200	HYDRAULIC HOSE L=2200
RS	B	4-603226	TUBO OLEODINAMICO L=3600	HYDRAULIC HOSE L=3600
	D	4-603408	TUBO D. 4X2 L=2800	HOSE D. 4X2 L=2800

**RS= RICAMBI CONSIGLIATI / RECOMMENDED SPARES****AGGIORNAMENTI / UPDATE:**



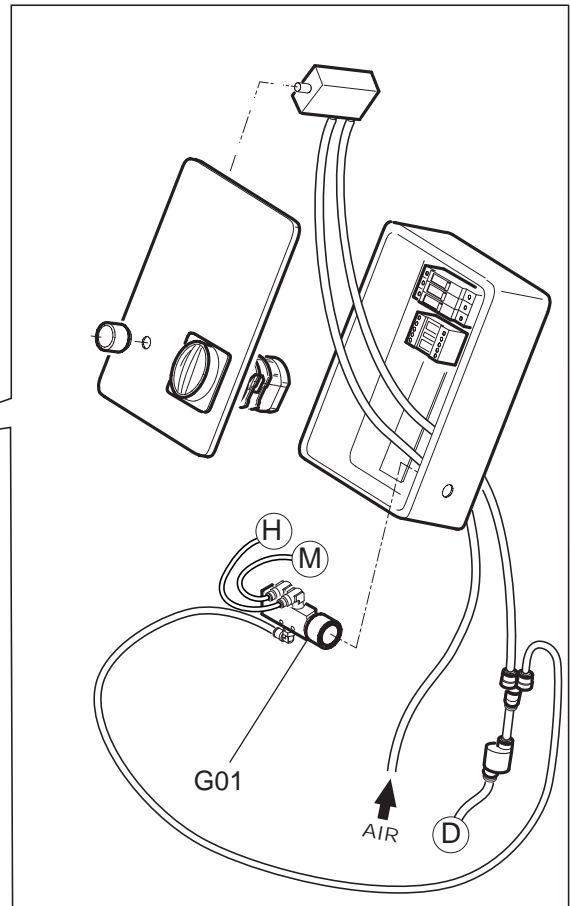
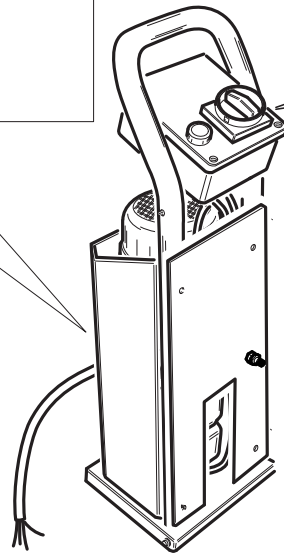
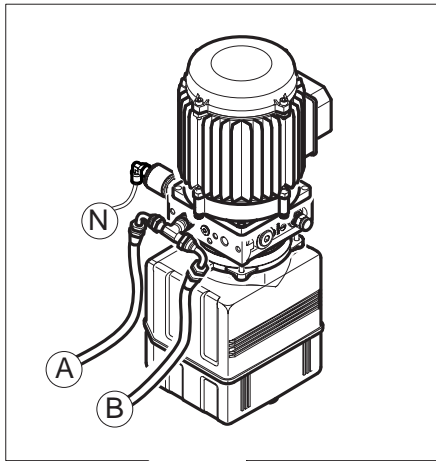
TAV F

**SOLLEVATORE VERSIONE INCASSO  
RECESSED VERSION LIFT**


RS	REF	COD.	DESCRIZIONE	DESCRIPTION
	F01	4-603629/**	PEDANA COPRI-BARRE	BAR COVER PLATFORM
	F02	5-600697	APPOGGIO RAMPA	RAMP SUPPORT UNIT
	F03	4-603628-1	CAMMA FINECORSA	LIMIT SWITCH CAM
	F04	5-601504	VALVOLA FINECORSA COMPLETA	COMPL. END OF STROKE VALVE
	F05	3-00238	RACCPN Y - T4	UNION Y - T4
	F06	3-01823	REGOLATORE DI FLUSSO	FLOW REGULATOR
	F07	3-00462	RACCPN D G1/4-T10	UNION D G1/4-T10
	F08	4-600945	AVVISATORE ACUSTICO	ACOUSTIC SIGNAL
	F09	5-601509	VALVOLA REGOLAZIONE DI FLUSSO	FLOW REGULATOR VALVE
<b>RS= RICAMBI CONSIGLIATI / RECOMMENDED SPARES</b>				

**AGGIORNAMENTI / UPDATE:**

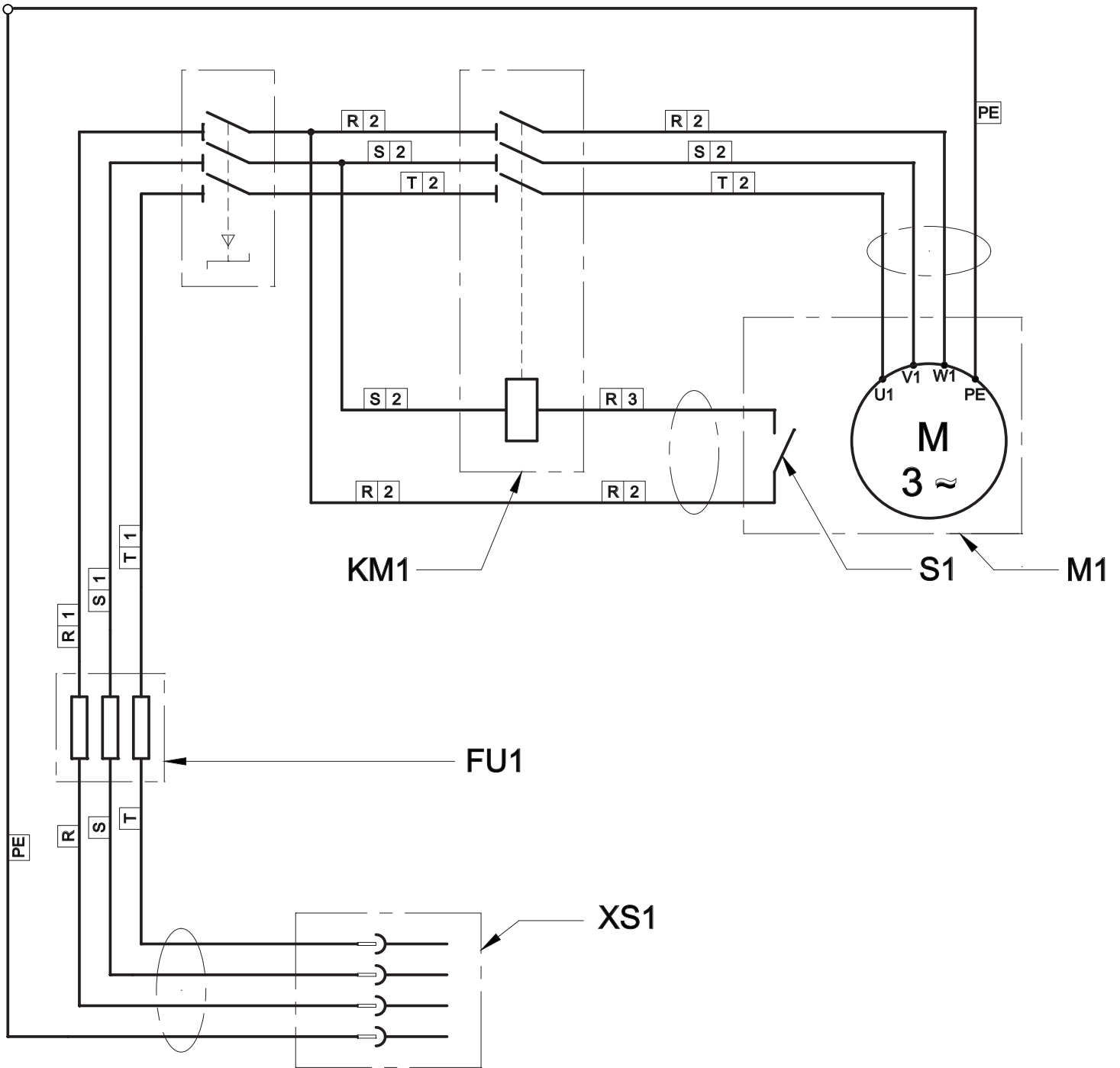




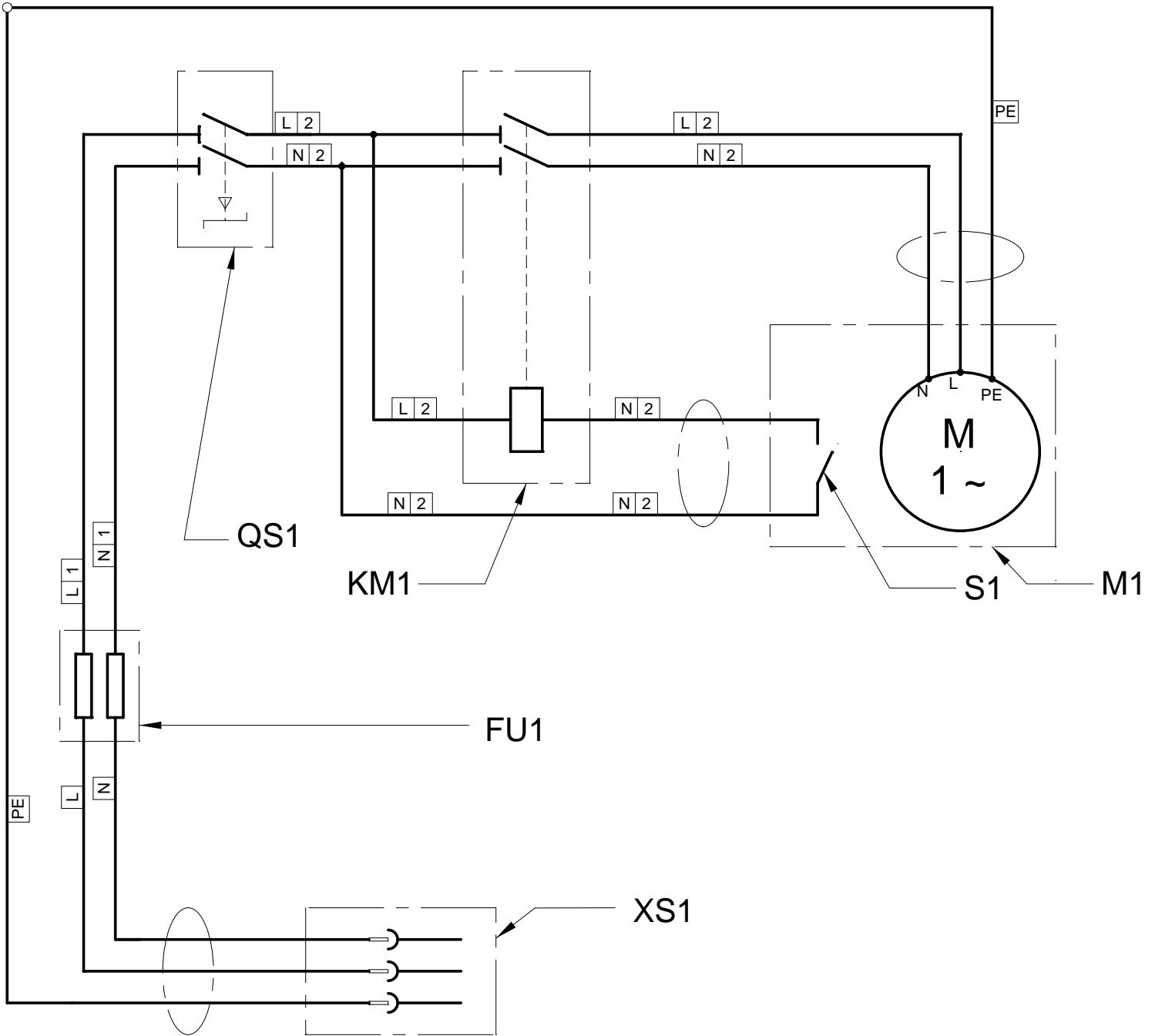
RS	REF	COD.	DESCRIZIONE	DESCRIPTION
	G01	5-601503	VALVOLA DI FINE DISCESA	ENDING DESCENT VALVE
	A	4-603225	TUBO OLEODINAMICO L=2200	HYDRAULIC HOSE L=2200
	B	4-603226	TUBO OLEODINAMICO L=3600	HYDRAULIC HOSE L=3600
	D	4-603408	TUBO D. 4X2 L=2800	HOSE D. 4X2 L=2800

**RS= RICAMBI CONSIGLIATI / RECOMMENDED SPARES**

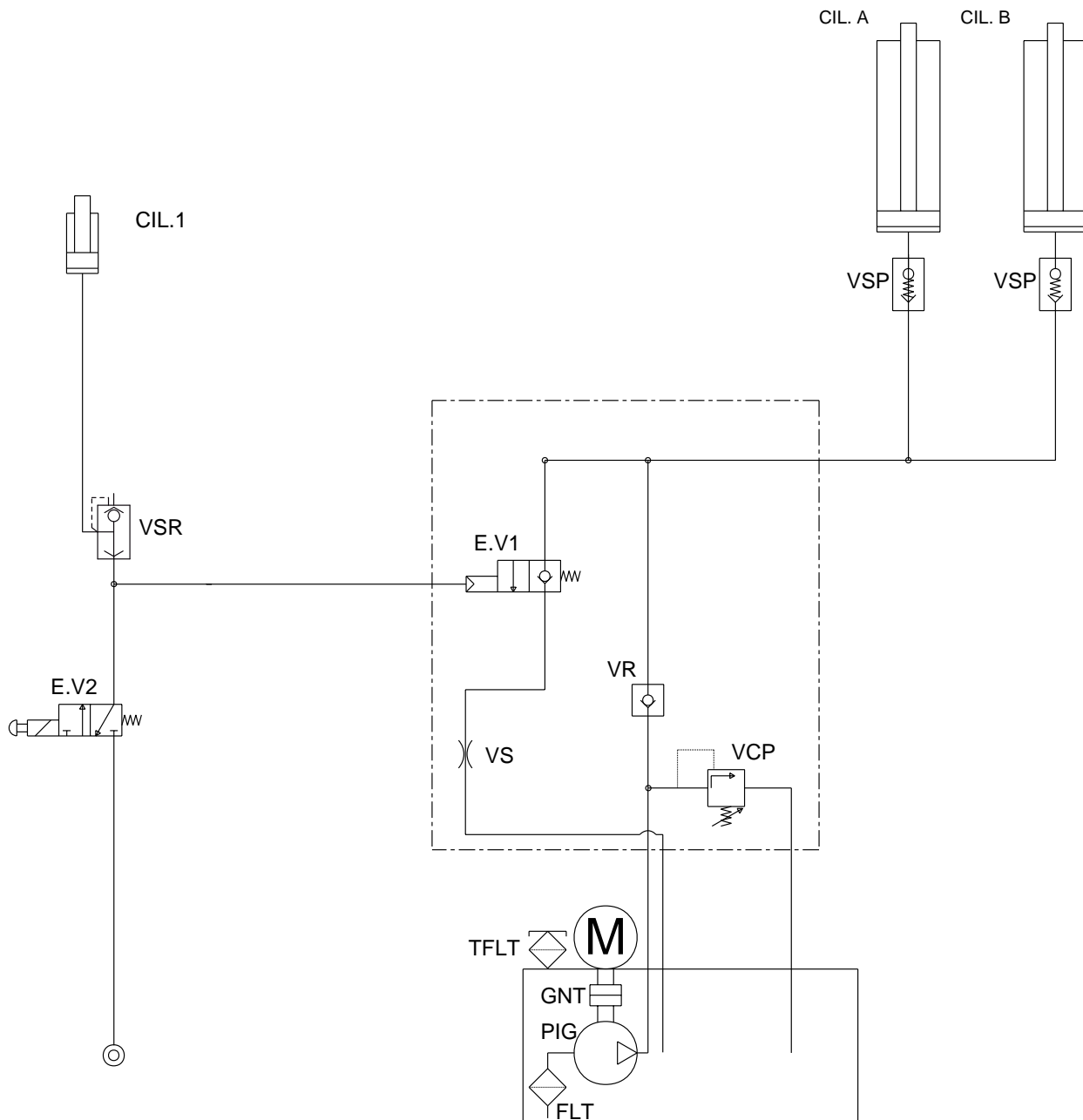
**AGGIORNAMENTI / UPDATE:**



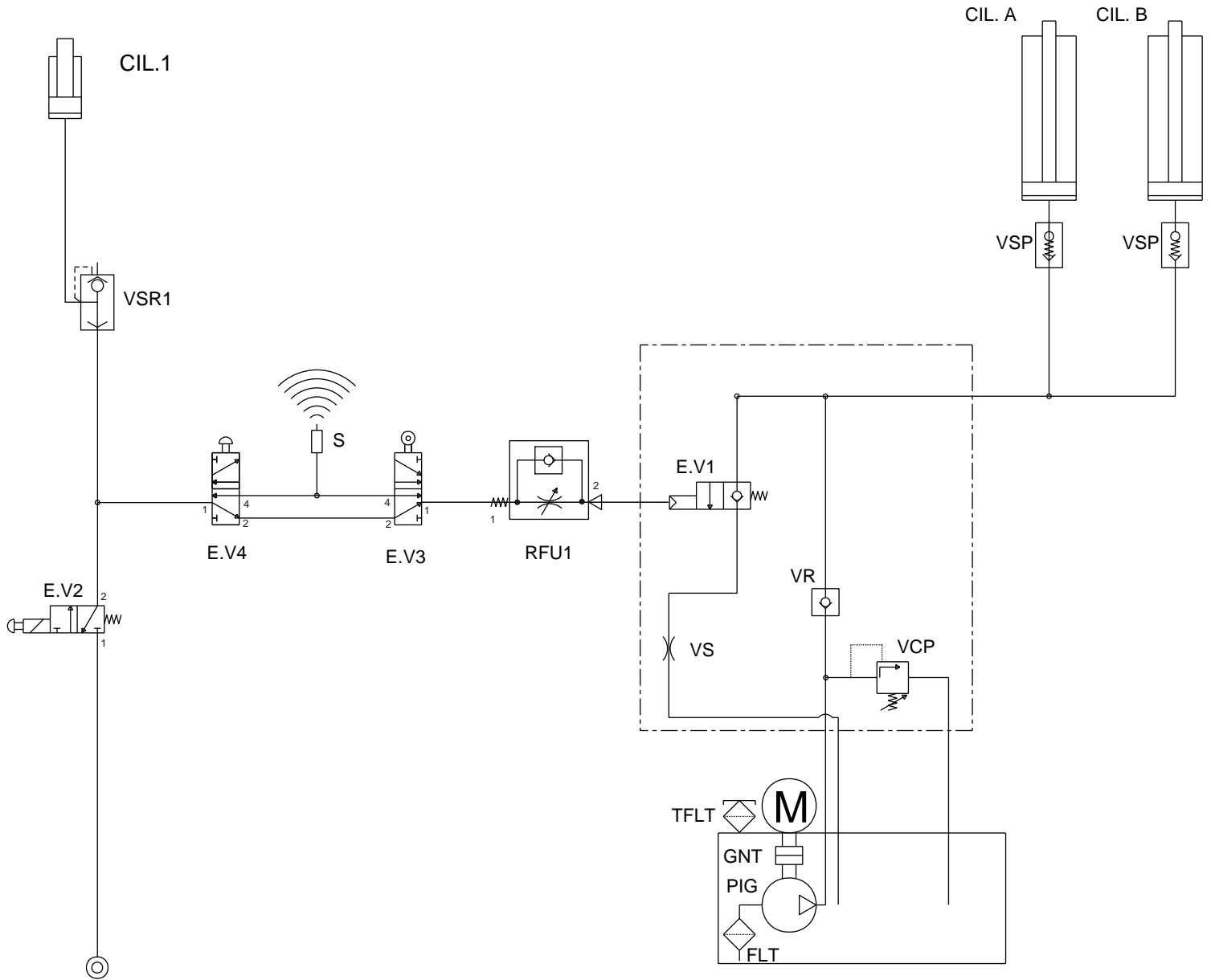
RS	REF	DESCRIZIONE	DESCRIPTION
	FU1	FUSIBILI 10A gG	MAIN FUSES (10 A GG)
	KM1	TELERUTTORE	REMOTE SWITCH
	QS1	INTERR. GENERALE COMANDO SALITA	MAIN SWITCH / ASCENT CONTROL
	S1	SONDA TERMICA MOTORE	MOTOR TEMPERATURE SENSOR
	XS1	SPINA ELETTRICA CE	CE PLUG



RS	REF	DESCRIZIONE	DESCRIPTION
	FU1	FUSIBILI 16A gG	MAIN FUSES (16 A GG)
	KM1	TELERUTTORE	REMOTE SWITCH
	QS1	INTERR. GENERALE COMANDO SALITA	MAIN SWITCH / ASCENT CONTROL
	S1	SONDA TERMICA MOTORE	MOTOR TEMPERATURE SENSOR
	XS1	SPINA ELETTRICA CE	CE PLUG



RS	REF	DESCRIZIONE	DESCRIPTION
	CIL. 1	CILINDRO PNEUMATICO	PNEUMATIC CYLINDER
	CIL. A	CILINDRO IDRAULICO SX	LH HYDRAULIC CYLINDER
	CIL. B	CILINDRO IDRAULICO DX	RH HYDRAULIC CYLINDER
	E.V1	VALVOLA DI DISCESA CON PILOTAGGIO PNEUMATICO	PNEUMATICALLY CONTROLLED DESCENT VALVE
	E.V2	VALVOLA DI DISCESA E SICUREZZA	DESCENT AND SAFETY VALVE
	VSR	VALVOLA DI SCARICO RAPIDO	FAST OUTLET VALVE
	VR	VALVOLA DI NON RITORNO	CHECK VALVE
	VS	VALVOLA STROZZATRICE	THROTTLE VALVE
	VSP	VALVOLA PARACADUTE	COUNTERBALANCE VALVE
	VCP	VALVOLA DI MASSIMA	RELIEF VALVE
	M	MOTORE KW 2.5 RPM 1500	MOTOR (2.5 KW AT 1500 RPM)
	PIG	POMPA INGRANAGGI 4.2 CC/GIRO	GEAR PUMP (4.2 CC/REV)
	GNT	GIUNTO	COUPLING
	TFLT	TAPPO	PLUG



RS	REF	DESCRIZIONE	DESCRIPTION
	CIL. 1	CILINDRO PNEUMATICO	PNEUMATIC CYLINDER
	CIL. A	CILINDRO IDRAULICO SX	LH HYDRAULIC CYLINDER
	CIL. B	CILINDRO IDRAULICO DX	RH HYDRAULIC CYLINDER
	E.V1	VALVOLA DI DISCESA CON PILOTAGGIO PNEUMATICO	PNEUMATICALLY CONTROLLED DESCENT VALVE
	E.V2	VALVOLA DI DISCESA E SICUREZZA	DESCENT AND SAFETY VALVE
	E.V3	VALVOLA BLOCCAGGIO DISCESA	DESCENT ARREST VALVE
	E.V4	VALVOLA ABILITAZIONE DISCESA	DESCENT ENABLE VALVE
	VSR1	VALVOLA DI SCARICO RAPIDO	FAST OUTLET VALVE
	RFU1	REGOLATORE DI FLUSSO	FLOW REGULATOR
	VR	VALVOLA DI NON RITORNO	CHECK VALVE
	VS	VALVOLA STROZZATRICE	THROTTLE VALVE
	S	SEGNALATORE ACUSTICO	AUDIBLE WARNING SIGNAL
	VSP	VALVOLA PARACADUTE	COUNTERBALANCE VALVE
	VCP	VALVOLA DI MASSIMA	RELIEF VALVE
	M	MOTORE KW 2.5 RPM 1500	MOTOR (2.5 KW AT 1500 RPM)
	PIG	POMPA INGRANAGGI 4.2 CC/GIRO	GEAR PUMP (4.2 CC/REV)
	GNT	GIUNTO	COUPLING
	TFLT	TAPPO	PLUG



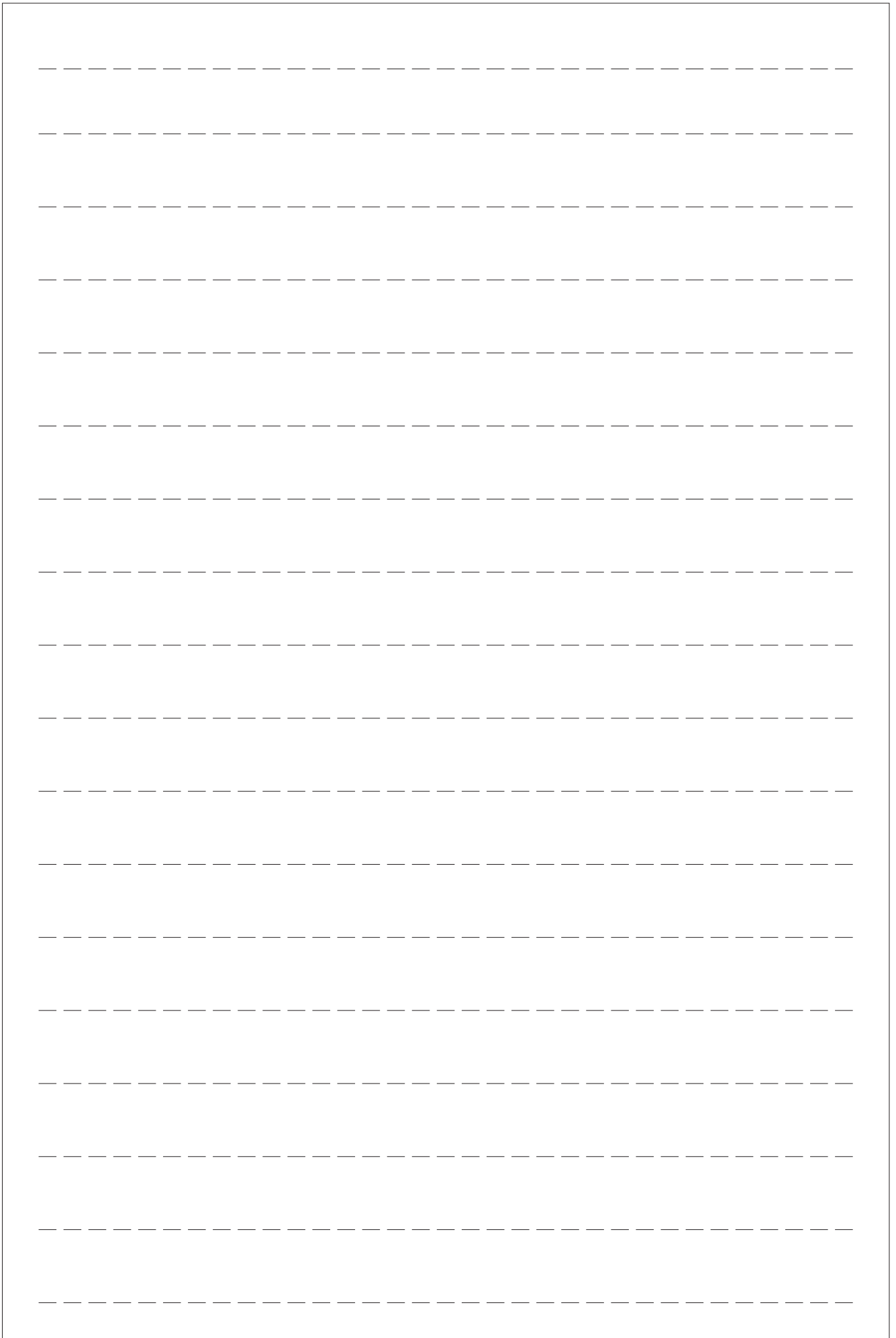
TAV Z

## RICAMBI CONSIGLIATI / RECOMMENDED SPARES

RS	REF	COD.	DESCRIZIONE	DESCRIPTION
RS	B17	4-603417	VALVOLA PARACADUTE	PARACHUTE VALVE
RS	B24	5-600681	KIT GUARNIZIONI CILINDRO	CYLINDER GASKETS KIT
RS	C09	5-601122	CILINDRO PNEUMATICO	PNEUMATIC CYLINDER
RS	E10	3-90643	MOTORE TRIFASE	3-PHASE MOTOR
RS	E10	3-03307	MOTORE 230/1/50 Hz	1-PHASE MOTOR
RS	E12	3-90368	VALVOLA COMANDO SCARICO	EXHAUST CONTROL VALVE
RS	E19	045521300A	INTERRUTTORE	SWITCH
RS	E22	3-90640	TELERUTTORE VERSIONE TRIFASE	THREE PHASE CONTACTOR
RS	E22	3-03310	TELERUTTORE VERSIONE MONOFASE	SINGLE PHASE CONTACTOR
RS	E25	5-600696	KIT FUSIBILI 10A - versione TRIFASE	FUSES KIT 10A - 3Ph version
RS	E25	5-601280	KIT FUSIBILI 16A - versione MONOFASE	FUSES KIT 16A - 1Ph version
RS	A	4-603225	TUBO OLEODINAMICO L=2200	HYDRAULIC HOSE L=2200
RS	B	4-603226	TUBO OLEODINAMICO L=3600	HYDRAULIC HOSE L=3600

**RS= RICAMBI CONSIGLIATI / RECOMMENDED SPARES**

AGGIORNAMENTI / UPDATE:





## **Automotive Equipment**

Teco Srl - Via Pio La Torre, n°10  
42015 Correggio (RE) Italy  
[www.teco.it](http://www.teco.it) - [www.tecorus.ru](http://www.tecorus.ru)  
[www.youtube.com/user/TECOsrl](http://www.youtube.com/user/TECOsrl)

Telephone: +39.0522.631562  
Fax: +39.0522.642373  
E-mail: [teco@teco.it](mailto:teco@teco.it)