



Automotive Equipment

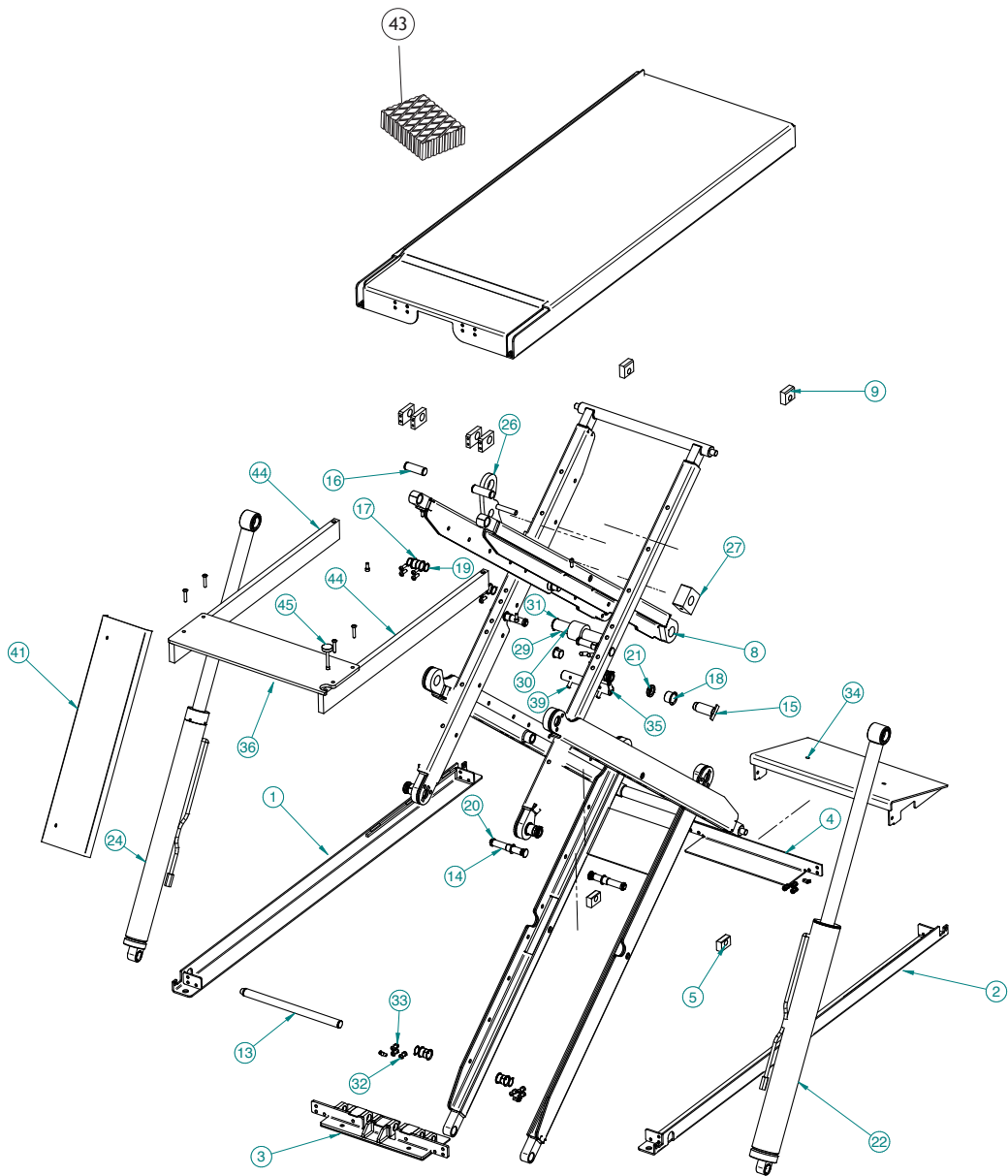
Spare parts



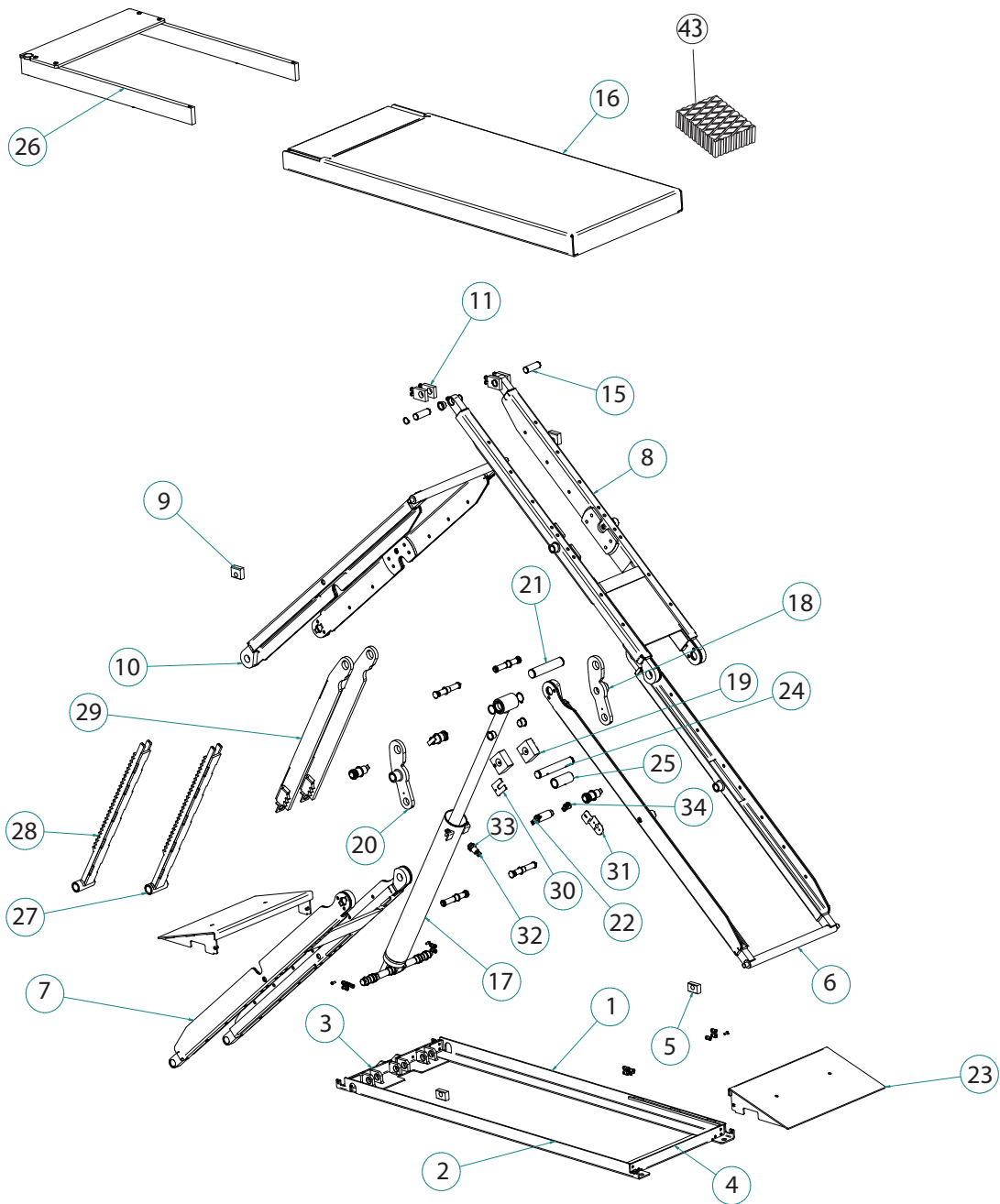
SOLLEVATORI AUTO VEHICLE LIFTS TECO 302-352-402

Versione 1.0 - Luglio 2013

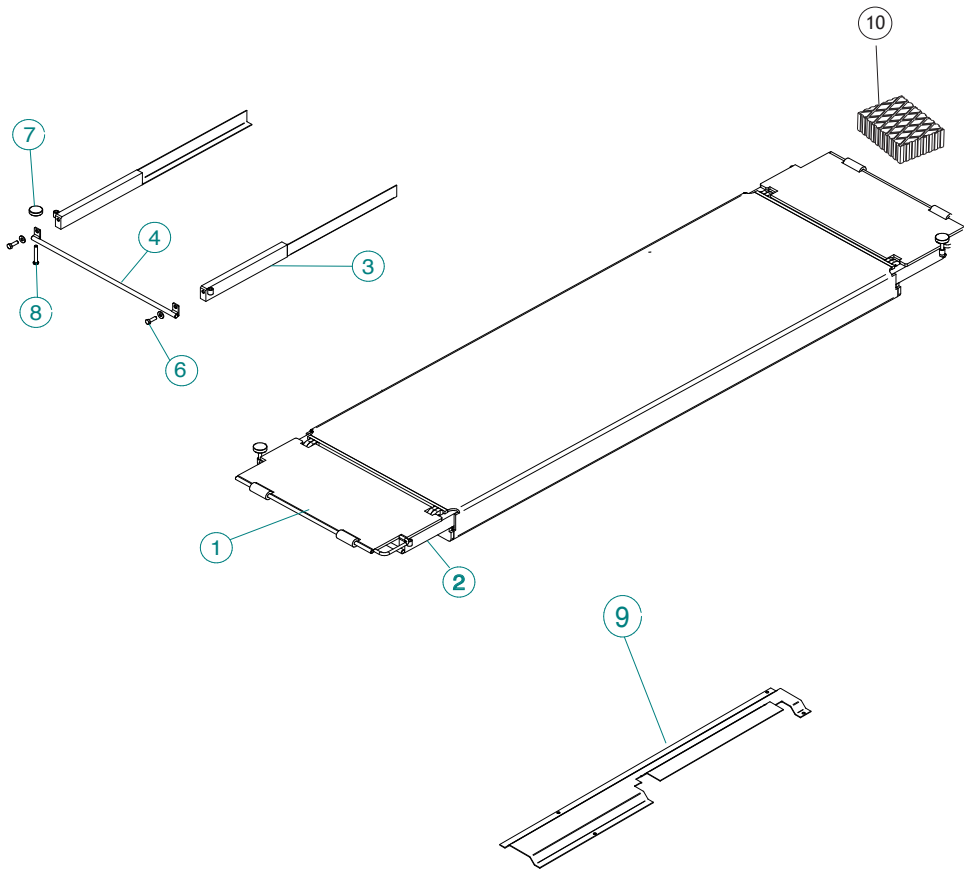




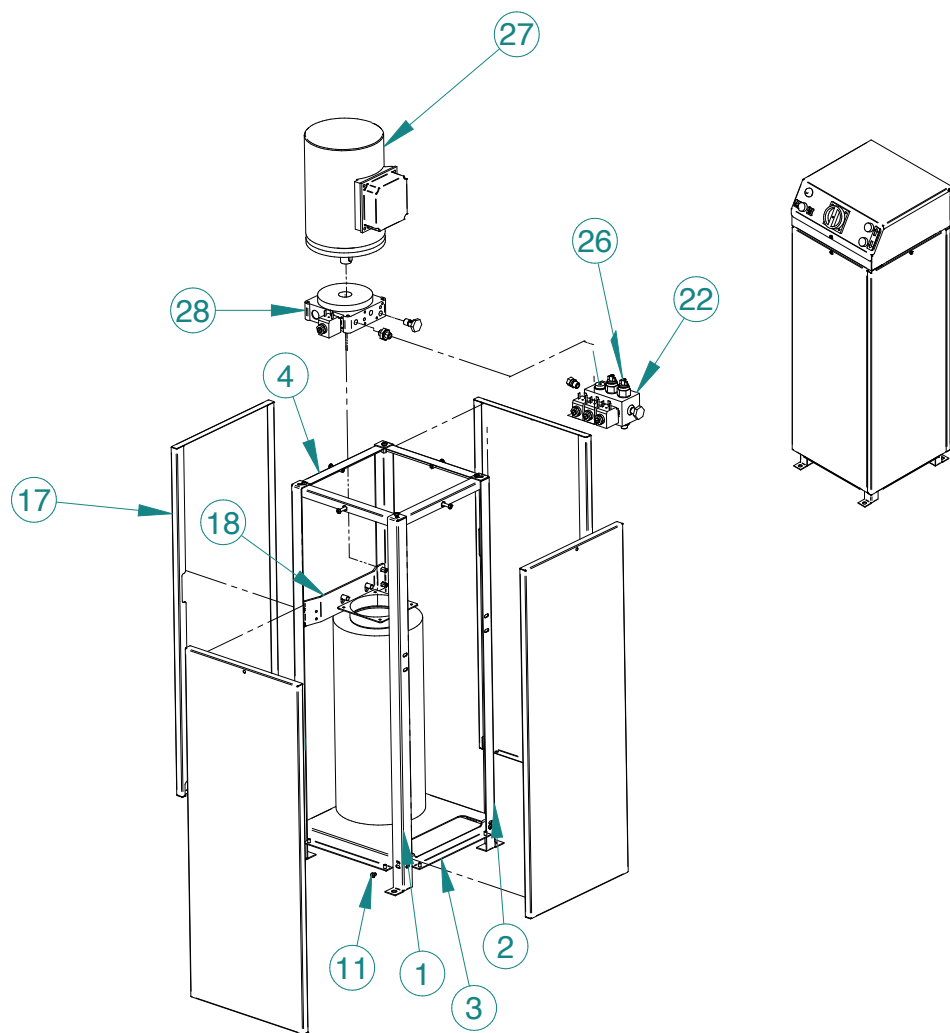
1	10-3058	Base DX	Base
2	10-3056	Base SX	Base
5	20-0733	Pattino Scorrimento Base	Slide
9	20-0734	Pattino Scorrimento Pedana	Slide
13	20-0065	Perno Attacco Pistone Inferiore	Pin
14	20-0743	Perno accoppiamento bracci	Pin
15	20-0112	Perno Fissaggio Bracci	Pin
16	20-0080	Perno attacco bracci superiori	Pin
17	60-0007	Boccola Flangiata $\varnothing 25 \times 16,5$	Bush
18	2-03703	Boccola Autolubrificata Flangiata $\varnothing 30 \times 26$	Bush
19	2-03702	Anello Elastico $\varnothing 25$ UNI 7435	Seeger
20	30-0254	Ghiera Autobloccante M15x1	Nut
21	70-3525	Ghiera Autobloccante M25x1.5	Nut
22	40-0732	Cilindro Pistone P1	Cylinder P1
24	40-0733	Cilindro Pistone P2	Cylinder p2
26	10-3068	Leva DX	Right lever
	10-3054	Leva SX	Left lever
27	20-0745	Pattino di scorrimento	Slide
29	20-0731	Perno Attacco Pistone Superiore	Pin
30	20-0735	Rullo Distanziale Cilindri	Roller
31	2-01139	Anello Elastico $\varnothing 35$ UNI 7435	Seeger
32	2-03677	Vite TBEI M8x25 UNIISO 7380	Screw
34	10-3070	Rampetta	Ramp
35	20-0732	Perno Fissaaggio Leva Inferiore	Pin
36	10-3066.01	Estensione Pedana	Extension platform
39	80-3000	Sensore Proximity	Proximity
40	2-03705	Boccola Autolubrificata Flangiata $\varnothing 25 \times 21,5$	Bush
41	20-2096	Copri Pistoni	Cover
43	35010736	Tampone in gomma	Rupper pad
44	10-2083.02	Barra estensione	extension bar
45	20-0362	Pomolo	Handle



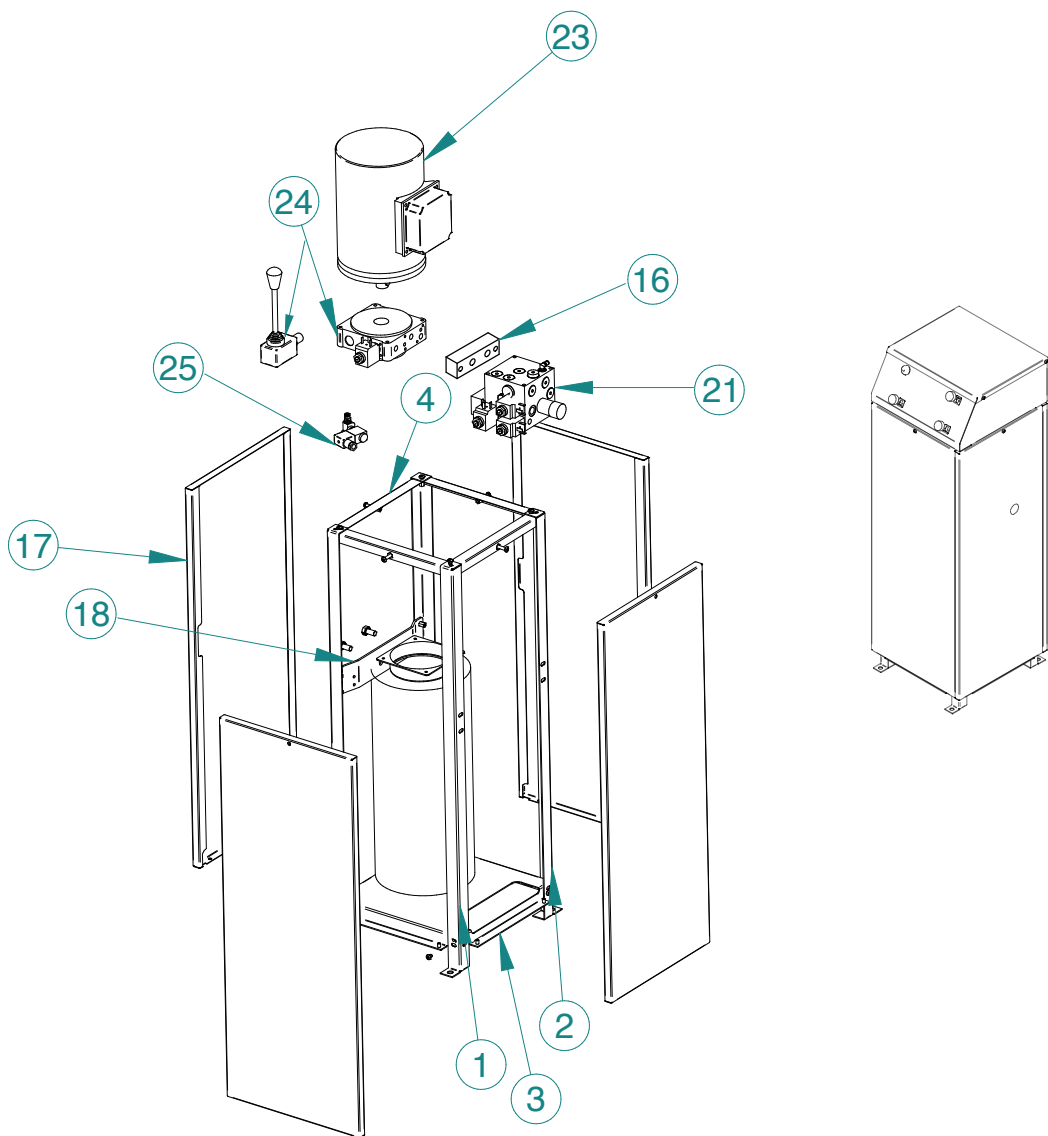
1	10-3058	Base DX	Base
2	10-3056	Laterale Base SX	Base
3	10-3153	Chiusura Anteriore Base con Sicurezza	Fastening
4	10-3060	Chiusura Posteriore Base	Fastening
5	20-0733	Pattino Scorrimento Base	Slide
6	10-3062	Braccio Esterno Inferiore	Outer arm lower
7	10-3061	Braccio Interno Inferiore	Inner Arm Lower
8	10-3063	Braccio Interno Superiore	Inner upper arm
9	20-0734	Pattino Scorrimento Pedana	Slide
10	10-3064	Braccio Esterno Superiore	Upper outer arm
11	20-0747	Piatto Attacco Braccio Pedana	Plate
12	20-0065	Perno Attacco Pistone Inferiore	Pin
13	20-0743	Perno accoppiamento bracci	Pin
14	20-0112	Perno Fissaggio Bracci	Pin
15	20-0080	Perno attacco bracci superiori	Pin
16	10-3065	Pedana	Platform
17	40-0731	Cilindro	Cylinder
18	10-3168	Leva con boccola	Lever
19	20-0011	Pattino di scorrimento	Slide
20	10-3154	Leva SX con boccola	Lever
21	20-0014	Perno Fissaggio sicurezza cilindro	Pin
22	20-0113	Perno Fissaggio Braccio LUNGO	Pin
23	10-3070	Rampetta	Ramp
24	20-0013	Perno Fissaggio Leva Inferiore lungo	Pin
25	20-0010	Distanziale lungo zona Pattini	Spacer
26	10-3066	Estensione Pedana P1	Extension
27	4-117596	Cremagliera Dx	Rack right
28	4-117597	Cremagliera Sx	Rack left
29	4-117595	Arpione Hermes	Safety
30	20-0012	Piastrino Blocca Pattino	Plate
31	20-0796	Supporto per encoder	Support
32	20-0015	Pattino pistoncino aria	Slide
33	4-111495	cilindro aria	Air cylinder
34	5-105351	Kit Encoder	Encoder
43	35010736	Tampone in gomma	Rupper pad



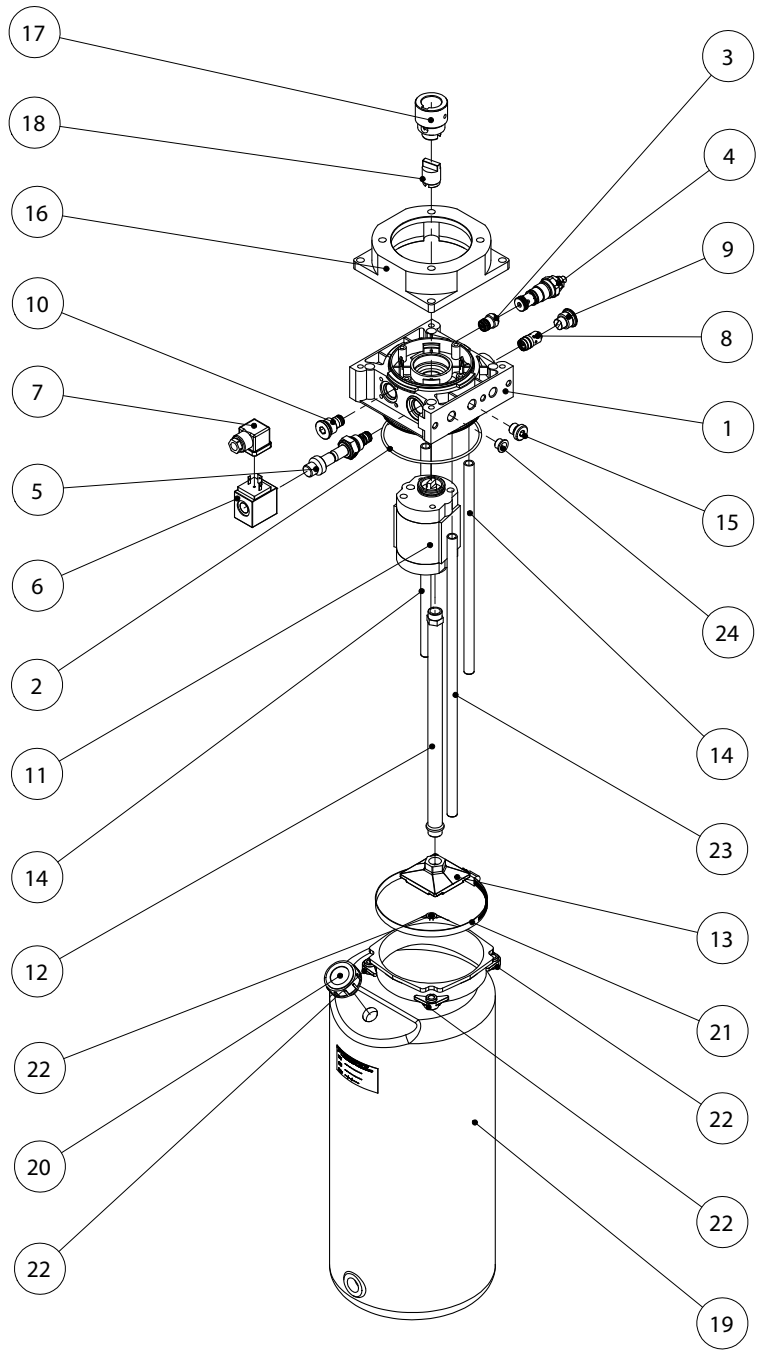
1	10-3001	Rampetta sx	Left ramp
	10-3002	Rampetta dx	Right ramp
2	5-106095	Estensione per flap completa	Extension kit for flap
3	4-118345	Barra estensione sx	Bar left extension
	4-118344	Barra estensione dx	Bar right extension
4	4-118346	Tondo estensione	Extension link
6	2-02024	Vite	Screw
	2-01299	Rondella	Washer
7	20-0362	Pomolo	Handle
8	2-03764	Vite	Screw
9	4-117177	Copritubi sx	Protection tubes left
	4-117178	Copritubi dx	Protection tubes right
10	35010736	Tampone in gomma H=45 mm	Rupper pad



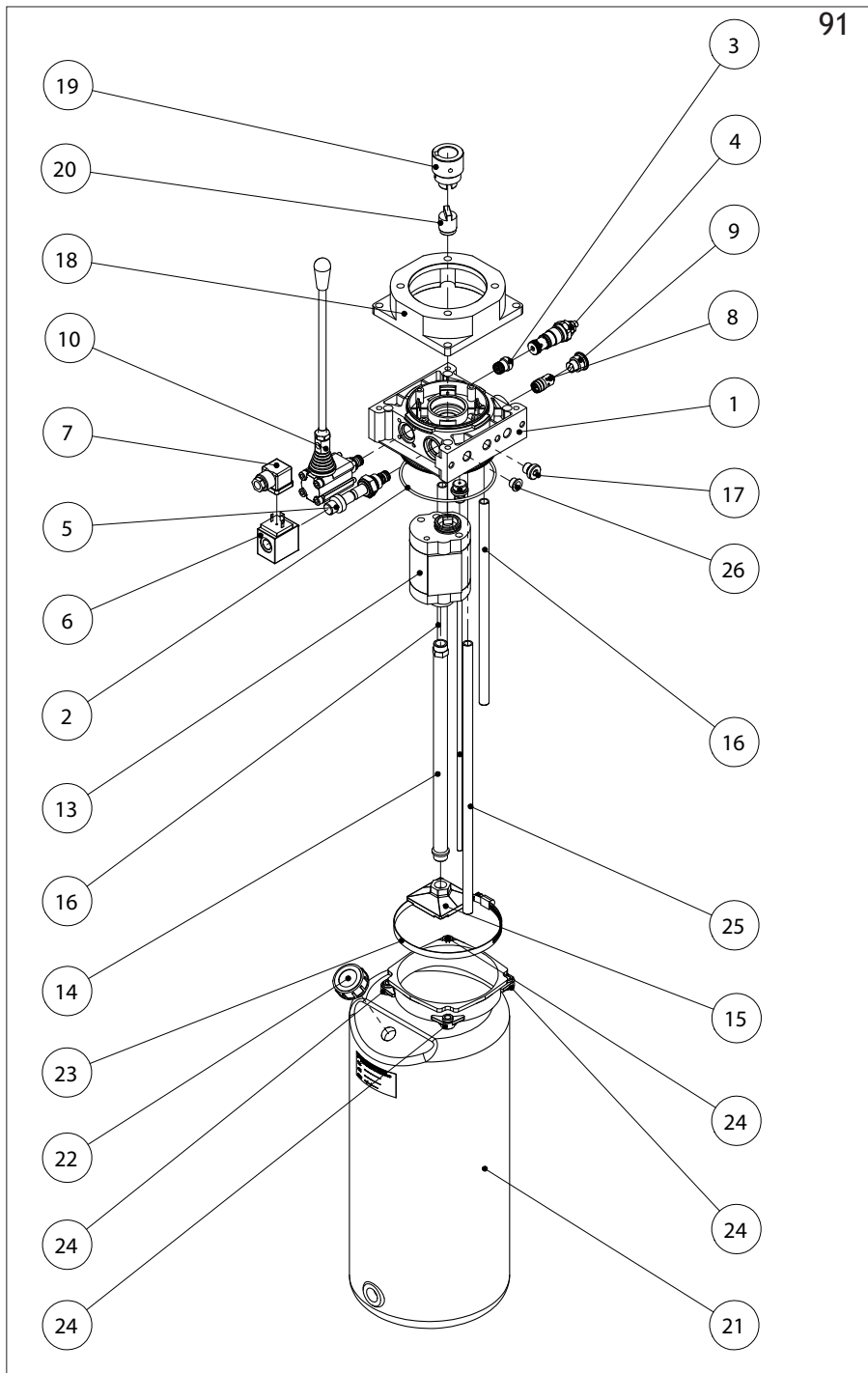
1	10-6101	Colonna Per Centralina DX	Support
2	10-6102	Colonna Per Centralina SX	Support
3	10-6109	Base Inferiore Completa	Base
4	10-6113	Cornice superire Completa	Support
11	2-02174	Vite TBEI(Button) M6x16 ZG	Screw
17	10-6116	Pannello Copertura Per Centralina	Cover
18	10-6120	Staffa	Support
22	40-1581	Blocco oleodinamico a tre uscite+ elettrov.	Complete block valves
26	40-1601	Pressostato	Pression
27	80-2221	Motore G90	El. motor
28	90-2246	Centralina Oleodinamica+serbatoio	Hidraulic unit



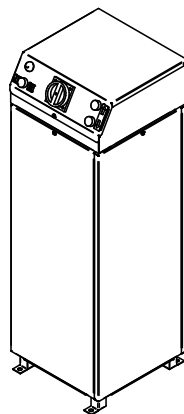
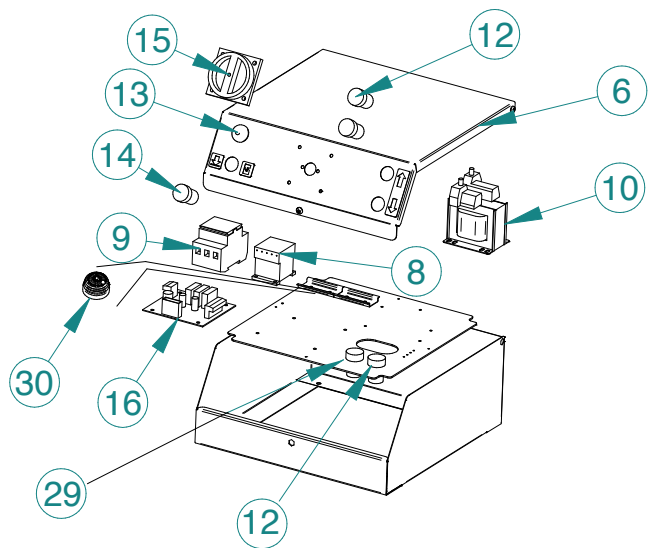
1	10-6101	Colonna Per Centralina DX	Support
2	10-6102	Colonna Per Centralina SX	Support
3	10-6109	Base Inferiore Completa	Base
4	10-6113	Cornice superire Completa	Support
11	2-02174	Vite TBEI(Button) M6x16 ZG	Screw
16	4-300135	Distanziale	Spacer
17	10-6116	Pannello Copertura Per Centralina	Cover
18	10-6120	Staffa	Support
21	5-105214	Blocco oleodinamico completo	block+ solenoid valve
23	80-2221	Motore G90 3 phase	3 phase Motor
24	90-2245	Centralina Oleodinamica Con Pompa a Mano	Unit control
25	5-105455	Elettrovalvola Pneumatica completa	Solenoid vale



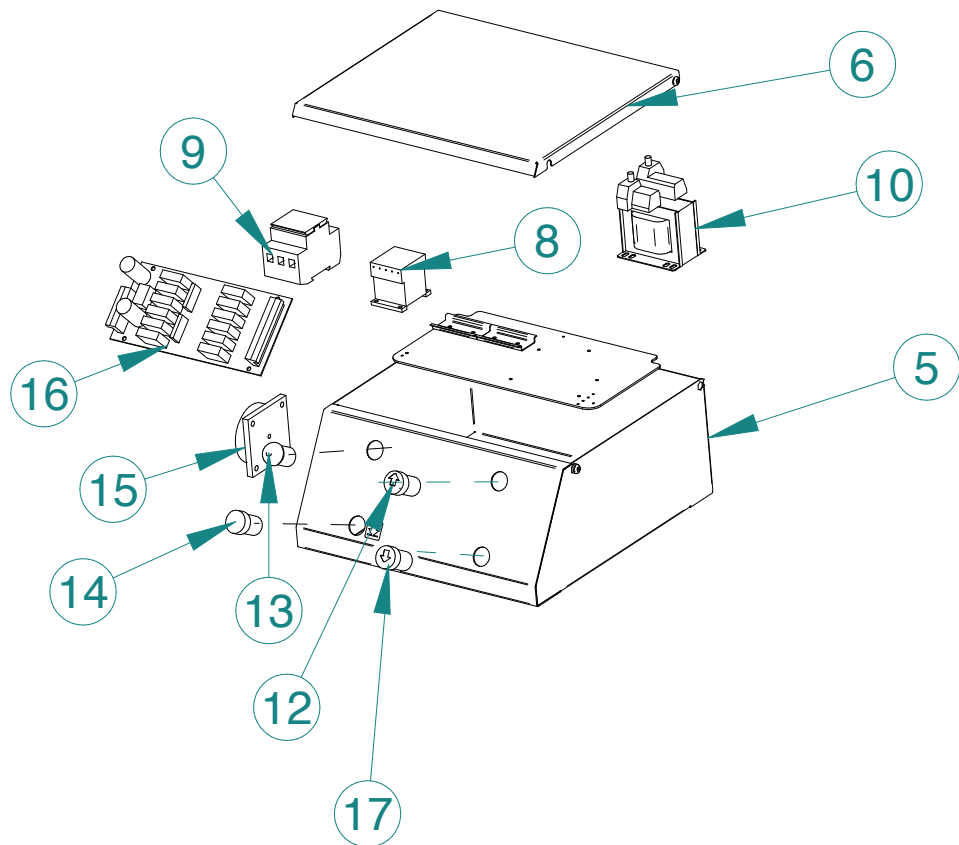
90	90-2246	Unità di potenza cpl.	Unit control
1	4-116732	Collettore	Coupling
2	4-116733	Or	Or
3	4-116734	Valvola integrata	Solenoid valve
4	4-116735	Valvola di max	Valve
5	4-116375	Valvola a cartuccia	Valve
6	4-116376	Bobina	Coil
7	4-116736	Connettore	Connector
8	4-118335	Strozzatore 8lt	Valve
9	4-116737	Tappo	Plug
10	4-116738	Tappo	Plug
11	4-118336	Pompa 6,10 cc	Pump
12	4-116740	tubo aspirazione	Suction pipe
13	4-116741	Filtro aspirazione	Suction filter
14	4-116742	Tubo scarico	Return pipe
15	4-116743	Tappo	Plug
16	4-116744	Flangia	Flange
17	4-116745	Giunto	Coupling
18	4-116746	Semigiunto	Coupling
19	4-116747	Serbatoio	Thank
20	4-116748	Tappo carico/sfiato	Plug
21	4-116751	Fascetta	
22	4-116749	Dado M6	Nut
23	4-116750	Tubo di scarico	Return pipe



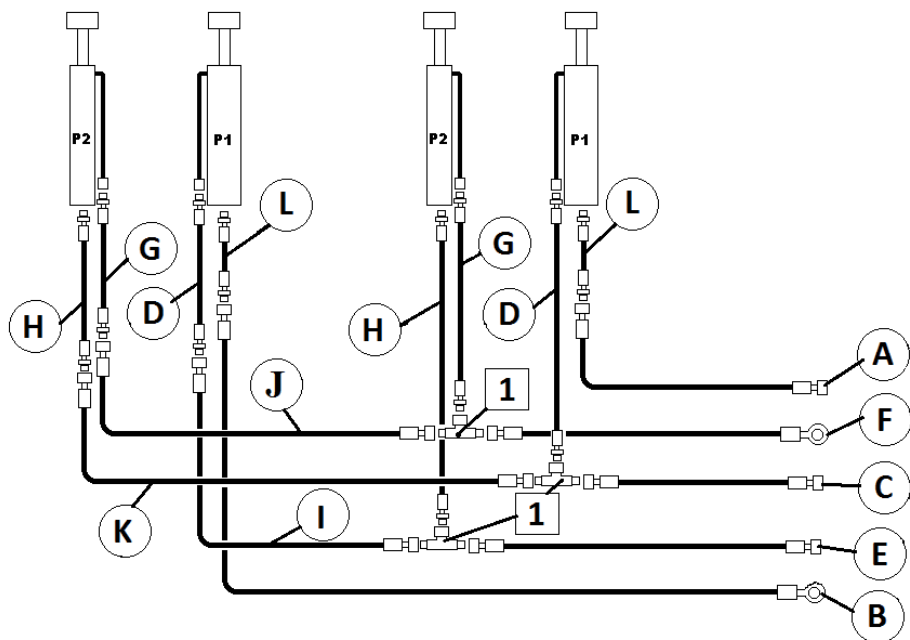
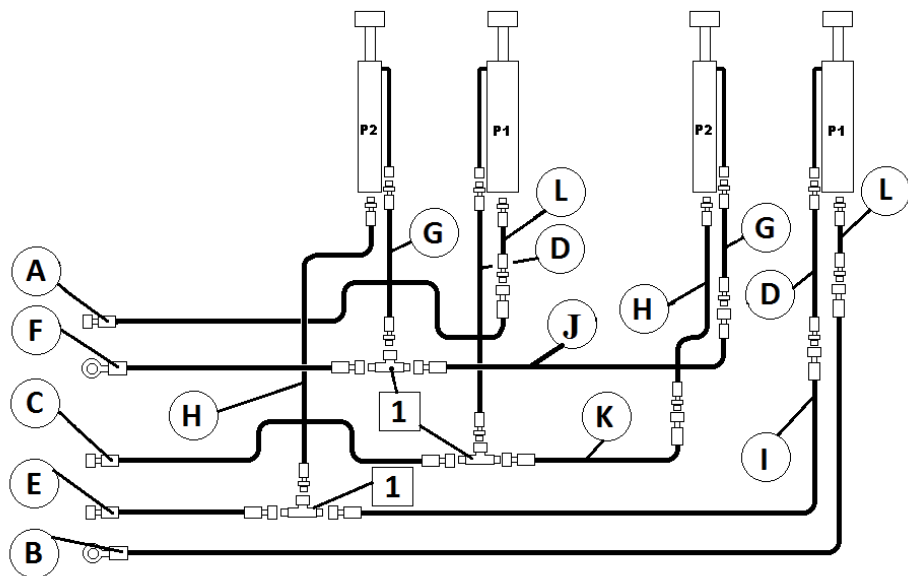
91	90-2245	Unità di potenza cpl.	Unit control
1	4-116732	Collettore	Coupling
2	4-116733	Or	Or
3	4-116734	Valvola ritegno	Valve
4	4-116735	Valvola di max	Valve
5	4-116375	Valvola a cartuccia	Valve
6	4-116376	Bobina	Coil
7	4-116736	Connettore	Connector
8	4-118335	Strozzatore 8lt	Valve
9	4-116737	Tappo	Plug
10	4-118338	Pompa a mano PM1	Hand pump
13	4-118336	Pompa 6,10 cc	Pump
14	4-116740	tubo aspirazione	Suction pipe
15	4-116741	Filtro aspirazione	Suction filter
16	4-116742	Tubo scarico	Retur pipe
17	4-116743	Tappo	Plug
18	4-116744	Flangia	Flange
19	4-116745	Giunto	Coupling
20	4-116746	Semigiunto	Coupling
21	4-116747	Serbatoio 11LT	Thank
22	4-116748	Tappo carico/sfiato 1/2"	Plug
23	4-116751	Fascetta	
24	4-116749	Dado M6	Nut
25	4-116750	Tubo di scarico	Return pipe



8	4-300410	Contattore 4 Kw (cc) 24 v	Thermal relay
9	4-300408	Portafusibili 3 P Z-SH/3 (32A)	Holders
	4-300409	Fusibile 0,5A 10x38	Fuse 2A
10	4-300411	Trasformatore 320VA 0÷230÷400	Transformer
12	4-300414	Pulsante Monostabile 2 contatti NO	Button
13	4-300415	Lampada Spia	Lamp
14	4-300413	Pulsante Discesa Finale VERDE 2 contatti	Green buton
15	4-300407	Interruttore Generale	Main switch
16	5-301063	Scheda elettrica	P.C.board
29	4-300416	Pulsante allineamento 1 contatto NO	Button



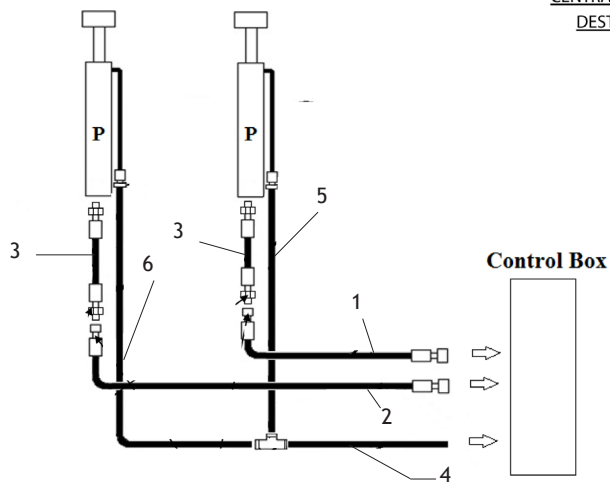
5	10-6114.01	Testata centralina	Support
6	10-6115	Coperchio centralina	Control box cover
8	4-300410	Contattore 4 Kw (cc) 24 v	Thermal relay
9	4-300408	Portafusibili 3 P Z-SH/3 (32A)	Holder
	84800602	Fusibile 2A 10x38	Fuse 0,5
10	4-300411	Trasformatore 320VA 0÷230÷400	Transformer
12	4-130064	Pulsante nero freccia bianca	Button
13	4-300415	Lampada Spia	Lamp
14	4-130065	Pulsante giallo	Green buton
15	4-130067	Interruttore Generale 16A	Main switch
16	5-105353	Scheda elettrica	P.C.board
	4-130066	Fusibile 5X2 VELOCE 5A	Fuse 5x2
17	4-130063	Pulsante bianco freccia nera	Button



A	4-116760	Tube flex l.3100 mm	pipe
B	4-116807	Tube flex l.4600 mm	pipe
C	40-0556	Tube flex l.3105 mm	pipe
D	4-116802	Tube flex l.360 mm	pipe
E	40-0557	Tube flex l.3005 mm	pipe
F	4-116804	Tube flex l.3105 mm	pipe
G	4-116803	Tube flex l.380 mm	pipe
H	4-116806	Tube flex l.180 mm	pipe
I	40-0558	Tube flex l.1850 mm	pipe
L	4-116762	Tube flex l.250 mm	pipe
J	40-0560	tubo flex l.1470 mm	pipe
K	4-116805	Tube flex l.1320 mm	pipe

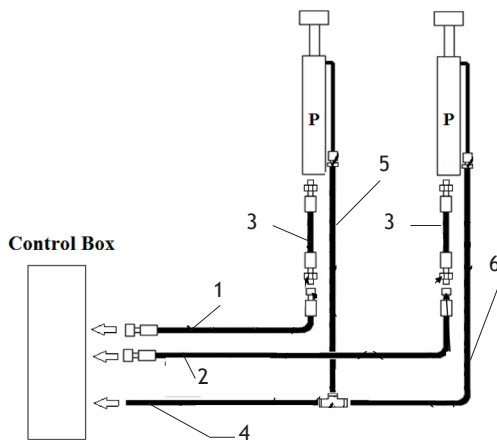
Right

SCHEMA IDRAULICO
INSTALLAZIONE
CENTRALINA A
DESTRA



SCHEMA IDRAULICO
INSTALLAZIONE
CENTRALINA A
SINISTRA

Left



1	4-116760	Tube flex l.3100 mm	pipe
2	4-116761	Tube flex l.4600 mm	pipe
3	4-116762	Tube flex l.250 mm	pipe
4	4-116765	Tube rylsan 10x8 l.1200 mm	pipe
5	4-116764	Tube rylsan 10x8 l.400 mm	pipe
6	4-116766	Tube rylsan l.3200 mm	pipe



Automotive Equipment

Teco Srl - Via Pio La Torre, n°10
42015 Correggio (RE) Italy
www.teco.it - www.tecorus.ru
www.youtube.com/user/TECOsrl

Telephone: +39.0522.631562
Fax: +39.0522.642373
E-mail: teco@teco.it