

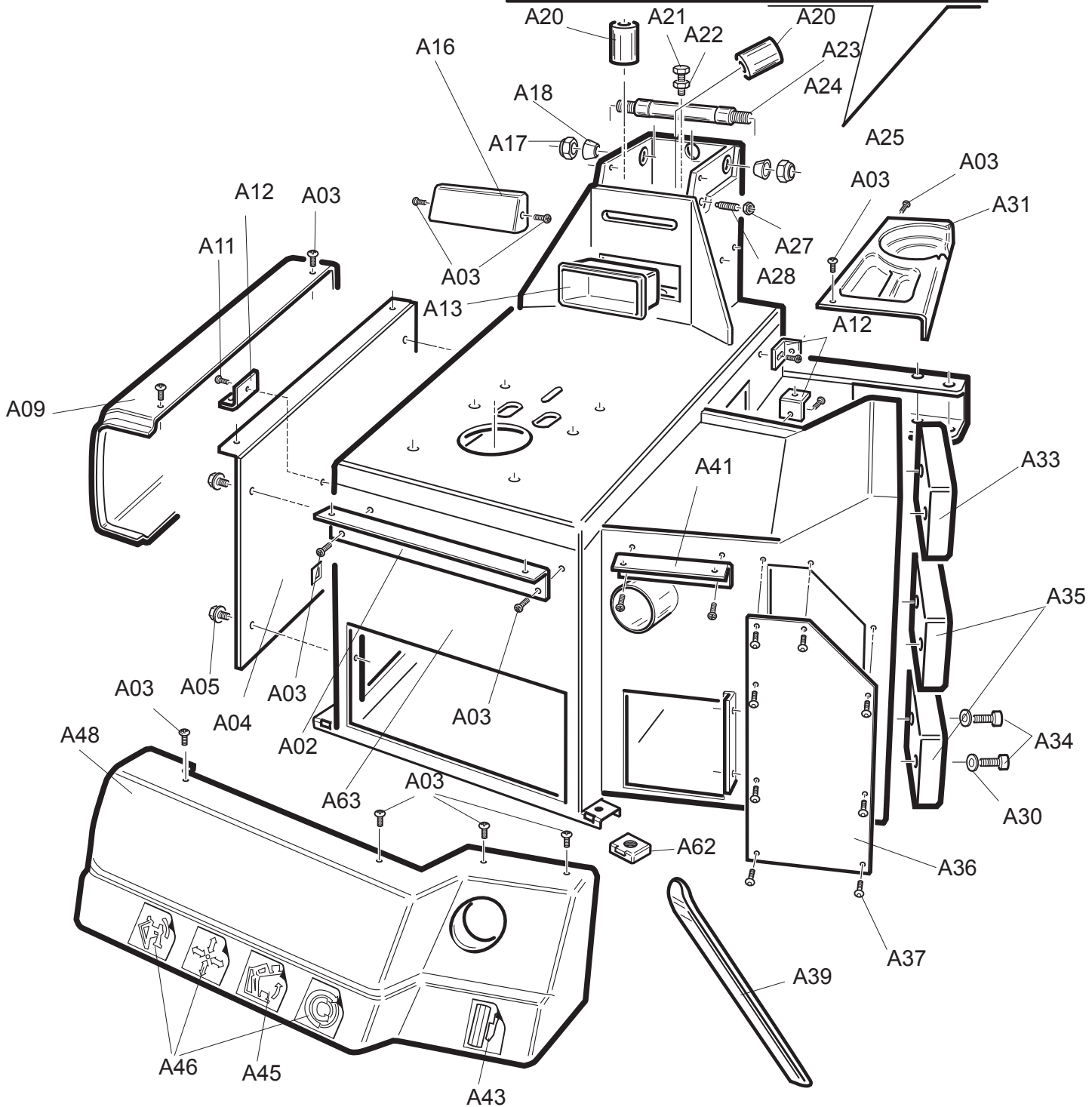
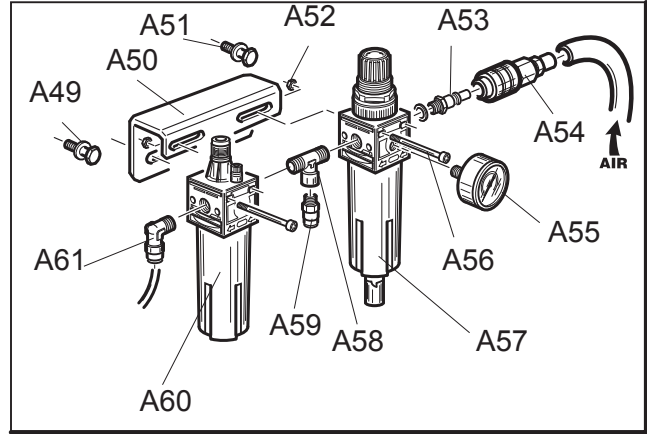
SMONTAGOMME TYRE CHANGERS TECO 40 TOP - 42 TOP

Cod. 4-137220 - November 2019



INDICE - INDEX

Tav. A	Carcassa	Body
Tav. B	Palo Verticale	Vertical Arm
Tav. B1	Torretta	Mounting Head
Tav. C	Piastra autocentrante 26"	Turntable 26"
Tav. C1	Piastra autocentrante 28"	Turntable 28"
Tav. D	Riduttore	Gearbox
Tav. E	Stallonatore	Bead Breaker
Tav. F	Pedaliera	Pedal Unit
Tav. G	Gruppo T.I.	T.I. Unit
Tav. H	Struttura TPH	TPH Unit
Tav. J	Bracci e centralina TPH	Arms & control unit
Tav. L	Sollevatore IPL	Lifter IPL
Tav. M	Variante MOTOINVERTER	MOTOINVERTER vers.
Tav. V	Schemi pneumatici	Pneumatic diagrams
Tav. Y	Schemi elettrici	Wiring diagrams
Tav. Z	Ricambi consigliati	Recommended spares

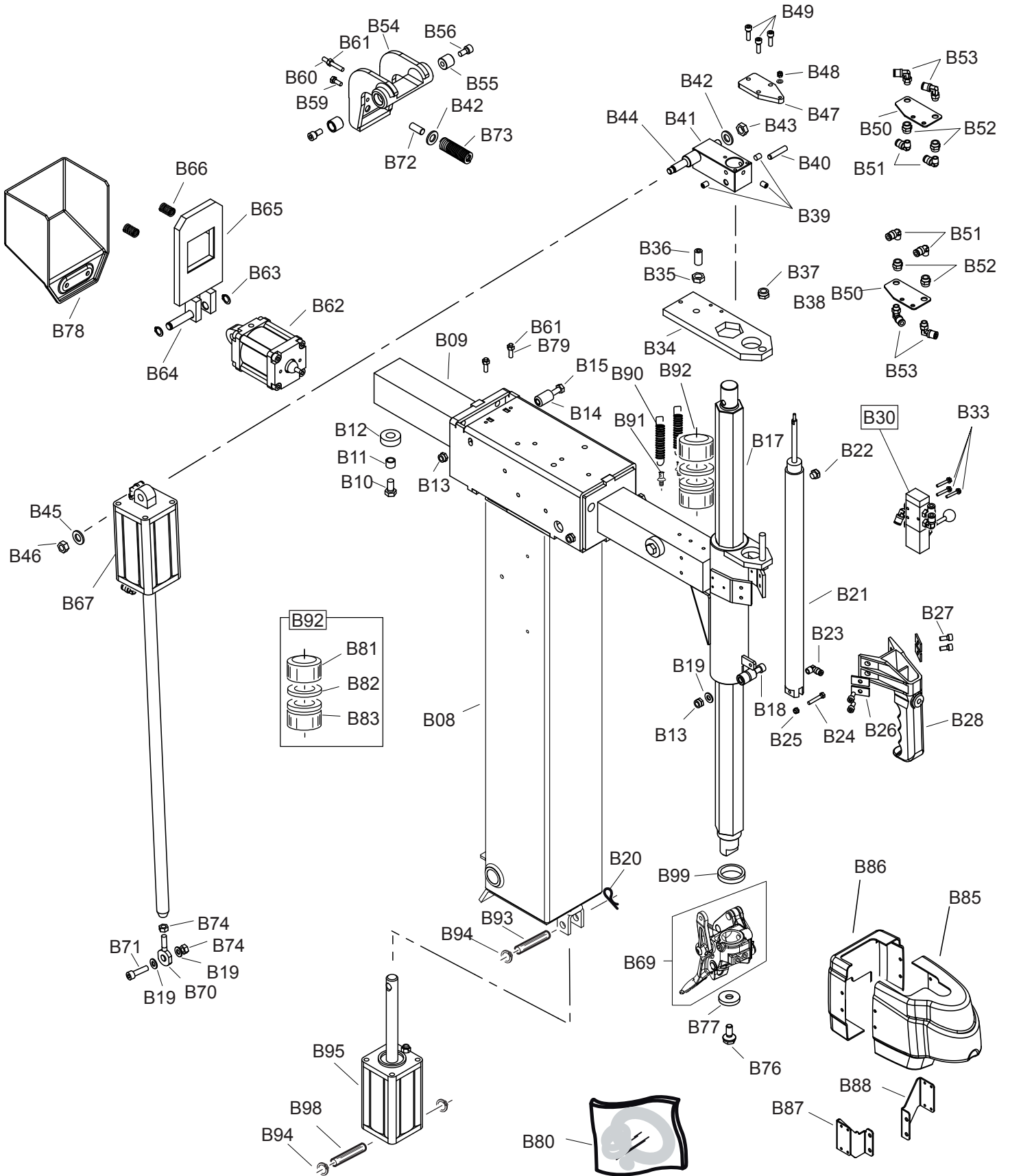


	TAV. A	TELAIO / CHASSIS
--	---------------	-------------------------

RS	REF	COD.	DESCRIZIONE	DESCRIPTION
	A02	4-600375/00	STAFFA FISS.CARTER	CARTER FIXING FLANSK
	A03	2-02888	VITE AUTOFILETTANTE 4.2X9.5	SELF TAPPING SCREW
	A04	4-601182/00	COPERCHIO LATERALE	SIDE COVER
	A05	2-02885	VITE AUTOFILETTANTE 6.3X16	SELF TAPPING SCREW
	A09	4-600485	CARTER LATERALE CASSONE	LATERAL CASING COVER
	A12	4-600528/00	STAFFA FISSAGGIO CARTER	CARTER FIXING FLANSK
	A13	002101400	VASCHETTA CENTRALE	CUP
	A16	4-600497/00	PROTEZIONE	PROTECTION
	A17	2-01174	DADO M18	NUT M18
	A18	001002500	BOCCOLA CONICA PER FULCRO	SPLIT BUSH
	A20	008901100	TAMPONE AMMORTIZZATORE	SHOCK ABSORBER
	A21	2-01037	VITE M 10X30	SCREW M10X30
	A22	2-91726	DADO M10	NUT M10
	A23	006503500	PERNO FULCRO	TILTING PIN
	A27	2-91640	DADO M12	NUT M12
	A28	2-02863	VITE M12X30	SCREW M12X30
	A30	2-00212	RONDELLA	WASHER
	A31	4-600487	CARTER PORTAGRASSO	OIL HOLDER
	A33	5-600173	APPOGGIO STALLON. FLOTTANTE	FLOATING BEAD BREAKER RUBBER
	A34	2-00319	VITE 8X16	SCREW M8X16
RS	A35	4-601007	APPOGGIO STALLONATORE	BEAD BREAKER RUBBER PAD
	A36	4-600535	LAMIERA CHIUSURA	CLOSING PLATE
	A37	2-02155	VITE 6X16	SCREW 6X16
	A39	044900800	LEVA ALZATALLONI	TYRE LEVER
	A41	4-600376/00	STAFFA FISSAGGIO CARTER	CARTER FIXING FLANSK
	A43	4-600547	ADESIVO STALLONATORE	BEAD BREAKER ADHESIVE
	A45	4-600332	ADESIVO SOLLEVATORE	LIFTER ADHESIVE
	A46	4-600331	ADESIVO PEDALIERA	PEDAL UNIT ADHESIVE
	A48	4-600486	CARTER PROTEZIONE PEDALI	PEDAL PROTECTION COVER
	A49	2-00211	RONDELLA	WASHER
	A50	008802500	SQUADRETTA SUPPORTO LUBRIFIC	LUBRICATOR SUPPORT SQUARE
	A51	2-00361	VITE 6X16	SCREW
	A52	2-00143	DADO M4	NUT M4
	A53	3-00410	GIUNTO RAPIDO MASCHIO	AST UNION M
	A54	047500500	RACCORDO RAPIDO A SFERA	AIRLINE CONNECTION
	A55	045300100	MANOMETRO	MANOMETER
	A56	2-71337	VITE TECI 4X50	SCREW TECI 4X50
RS	A57	3-00964	FILTRO REGOLATORE	COMPLETE FILTER
	A58	3-00169	RACCORDO T	UNION T
	A59	3-00459	RACCORDO D	UNION D
	A60	4220004	LUBRIFICATORE	COMPLETE AIR LUBRICATOR
	A61	3-00221	RACCORDO L	UNION L
	A62 (#)	3305148	PIEDE IN GOMMA	SHOCK ABSORBER
	A62	4-406032	PIEDE IN GOMMA	SHOCK ABSORBER
	A63	4-601141/00	CASSONE	BODY

RS= RICAMBI CONSIGLIATI / RECOMMENDED SPARES

AGGIORNAMENTI / UPDATE: (#) : fino alla matricola / up to serial number 101060066



	TAV. B	PALO VERTICALE / VERTICAL POST
--	---------------	---------------------------------------

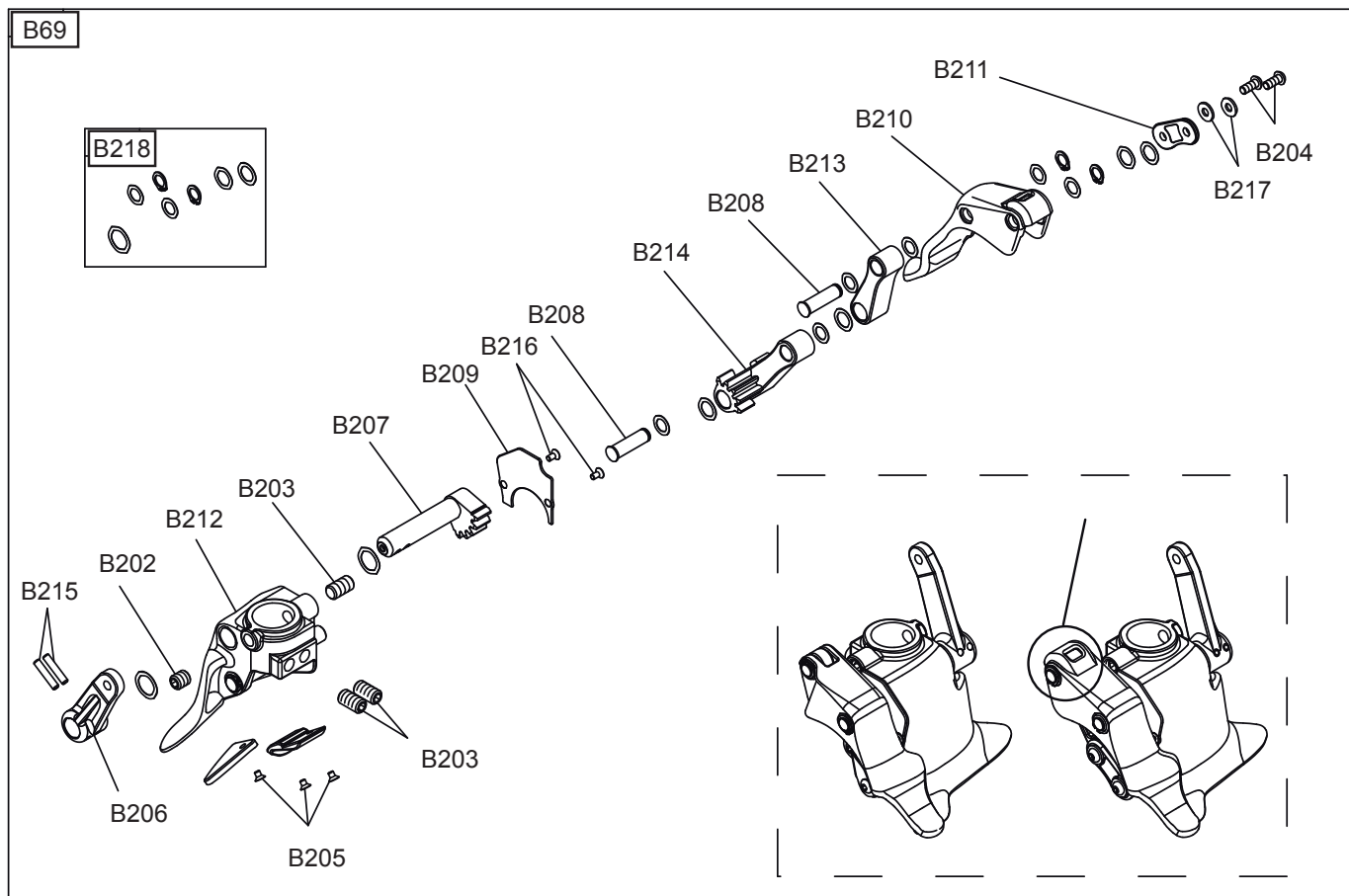
RS	REF	COD.	DESCRIZIONE	DESCRIPTION
	B08	4-601596/00	PALO VERTICALE	VERTICAL COLUMN
	B09	4-601880/00	BRACCIO ORIZZONTALE TOP LINE	HORIZONTAL ARM TOP LINE
	B10	2-00379	VITE TE M10X20	SCREW TE M10X20
	B11	002702700	DISTANZIALE TAMPONE	SPACER
	B12	008901000	TAMPONE ARRESTO BRACCIO	ADSORBER FOR HORIZONTAL ARM
	B13	2-01137	DADO AUTOBLOCCANTE M8	SELF-LOCKING NUT M8
	B14	4-601005	RULLO BRACCIO	HORIZONTAL ARM ROLLER
	B15	2-02876	VITE TE M8X140	SCREW TE M8X140
	B17	4-601541	ASTA VERTICALE LL	VERTICAL ARM LL
	B18	2-00324	VITE TCEI M8X40	SCREW TCEI M8X40
	B19	2-00212	RONDELLA PIANA D.8	FLAT WASHER D.8
	B20	042801200	COPIGLIA D.2	SPLIT PIN D.2
	B21	4-601547	CILINDRO ALZATA ASTA LL	CYLINDER FOR VERTICAL ARM
	B22	3-00181	SILENZIATORE A SFERE G1/8	SILENCER G1/8
	B23	3-00220	RACCPN L G1/8 - T4	UNION L G1/8 - T4
	B24	2-00358	VITE TE M5X30	SCREW TE M5X30
	B25	2-71524	DADO AUTOBLOCCANTE M5	SELF-LOCKING NUT M5
	B26	4-600740-1	SPESSORE X VITI	SPACERS FOR SCREW
	B27	2-00728	VITE TCEI M6X14	SCREW M6X14
	B28	5-600381	MANIGLIA COMPLETA	COMPLETE HANDLE
	B30	5-600343	VALVOLA COMPLETA	COMPLETE VALVE
	B33	2-00352	VITE TE M4X25	SCREW TE M4X25
	B34	4-601883	PIASTRA BLOCCAGGIO ASTA	MOUNTING BAR LOCKING PLATE
	B35	2-91640	DADO ES B M12	NUT M12
	B36	2-72012	VITE STEI M12X25	SCREW STEI M12X25
	B37	2-71525	DADO AUTOBLOCCANTE M10	SELF-LOCKING NUT M10
	B38	045604000	MOLLA A TAZZA	BELLEVILLE WASHER
	B39	2-00529	VITE STEI M8X10	SCREW M8X10
	B40	2-03099	SPINA CILINDRICA D.8X40	CYLINDRICAL PIN D.8X40
	B41	4-601542	BLOCCETTO ATTACCO ASTA	FIXING BLOCK FOR BAR
	B42	2-00213	RONDELLA PIANA D.10	FLAT WASHER D.10
	B43	2-91726	DADO ES M10	NUT M10
	B44	4-601546	PERNO ATTACCO CILINDRO	CYLINDR FIXING PIN
	B45	2-00214	RONDELLA PIANA D.12	FLAT WSAHER D.12
	B46	2-91640	DADO ES M12	NUT M12
	B47	4-601543-1	PIASTRA ATTACCO CILINDRO	FIXING PLATE FOR CYLINDER
	B48	2-00143	DADO M4	NUT M4
	B49	2-00310	VITE TCEI M6X20	SCREW TCEI M6X20
	B50	4-601545	LAMIERA SUPPORTO SPIRALI	SUPPORT PLATE
	B51	3-00219	RACCPN L G1/8 - T6	UNION L G1/8 - T6
	B52	3-00102	RACCPN MANICOTTO G/8F	COUPLING BOX G1/8F
	B53	3-00053	RACCPN LO G1/8 - T6	UNION LO G1/8 - T6
	B54	4-601242	CAMMA DI BLOCCAGGIO	LOCKING CAM
	B55	4-601249	BOCCOLA PER CAMMA	CAM BUSH
	B56	2-00320	VITE TCEI M8X20	SCREW TCEI M8X20
	B59	2-00362	VITE TE M6X20	SCREW TE M6X20
	B60	2-72238	VITE STEI M6X45	SCREW M6X45
	B61	2-00146	DADO ES M6	NUT M6
RS= RICAMBI CONSIGLIATI / RECOMMENDED SPARES				

AGGIORNAMENTI / UPDATE:

(#2): fino alla matricola \ up to serial number 130160052

TAV. B2

TORRETTA / MOUNTING HEAD
da matricola / from serial number 130160053
fino a matricola / up to serial number 160562929



RS	REF	COD.	DESCRIZIONE	DESCRIPTION
	B69	5-104774	TORRETTA COMPLETA - BLACK	COMPLETE HEAD - BLACK
	B202	2-01040	VITE STEI M12X12	SOCKET SET SCREW M12X12
	B203	2-02096	VITE STEI M12X20	SOCKET SET SCREW M12X20
	B204	2-03409	VITE TBEI ISO7380 M6X14	SCREW M6X14
	B205	2-03438	VITE TSPEI M4X6	SOCKET COUNTERSUNK SCREW M4X6
	B206	4-103256	LEVA DI COMANDO	LEVER
	B207	4-103264	INGRANAGGIO DI COMANDO	GEAR
	B208	4-103932	PERNO ANTERIORE	PIN
	B209	4-106610	COPERTURA INGRANAGGI	GEAR COVER
	B210	4-115079	GANCIO	LEVERLESS HOOK
	B211	4-115080	RINFORZO BIELLE	STIFFENING
	B212	4-115182	TORRETTA BASC. CON PERNI	HEAD WITH PINS
	B213	5-101265	BIELLA + BOCCOLE	TRACE
	B214	5-104772	BIELLA CON INGR. + BOCCOLE	TRACE
	B215	2-03737	SPINA CILINDR. D5 (H6)X24MM	PARALLEL PIN D5 (H6)X24MM
	B216	2-72205	VITE TSPEI M4X8	SOCKET COUNTERSUNK SCREW M4X8
	B217	453469	RONDELLA ACC.D. 6,3X14,8X1,5	SHIM WASHER 6.3X14.8X1.5
	B218	5-105825	RICAMBIO MINUTERIA TORRETTA LL	SHIM AND SPRING RING KIT
RS= RICAMBI CONSIGLIATI / RECOMMENDED SPARES				

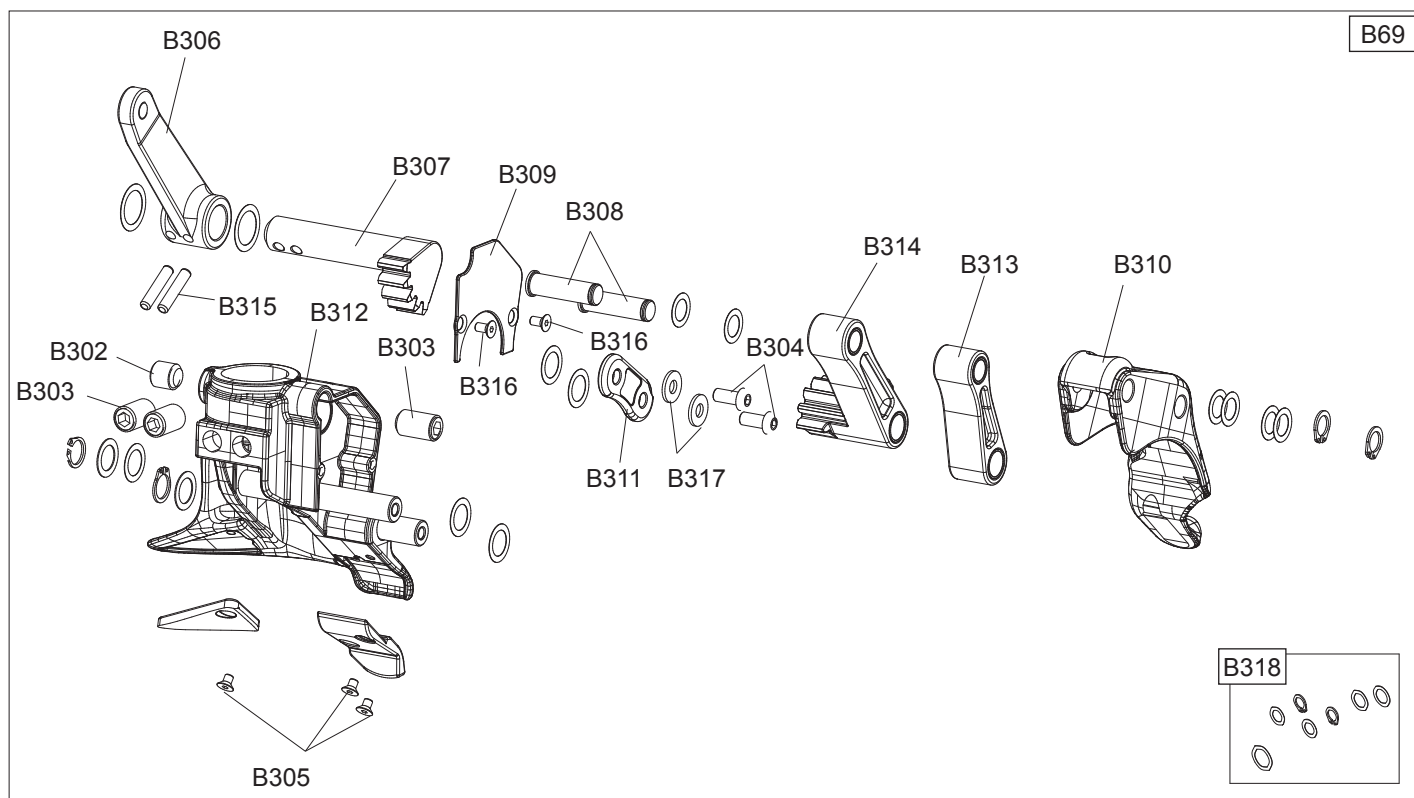
AGGIORNAMENTI / UPDATE:

TAV. B3

TORRETTA / MOUNTING HEAD

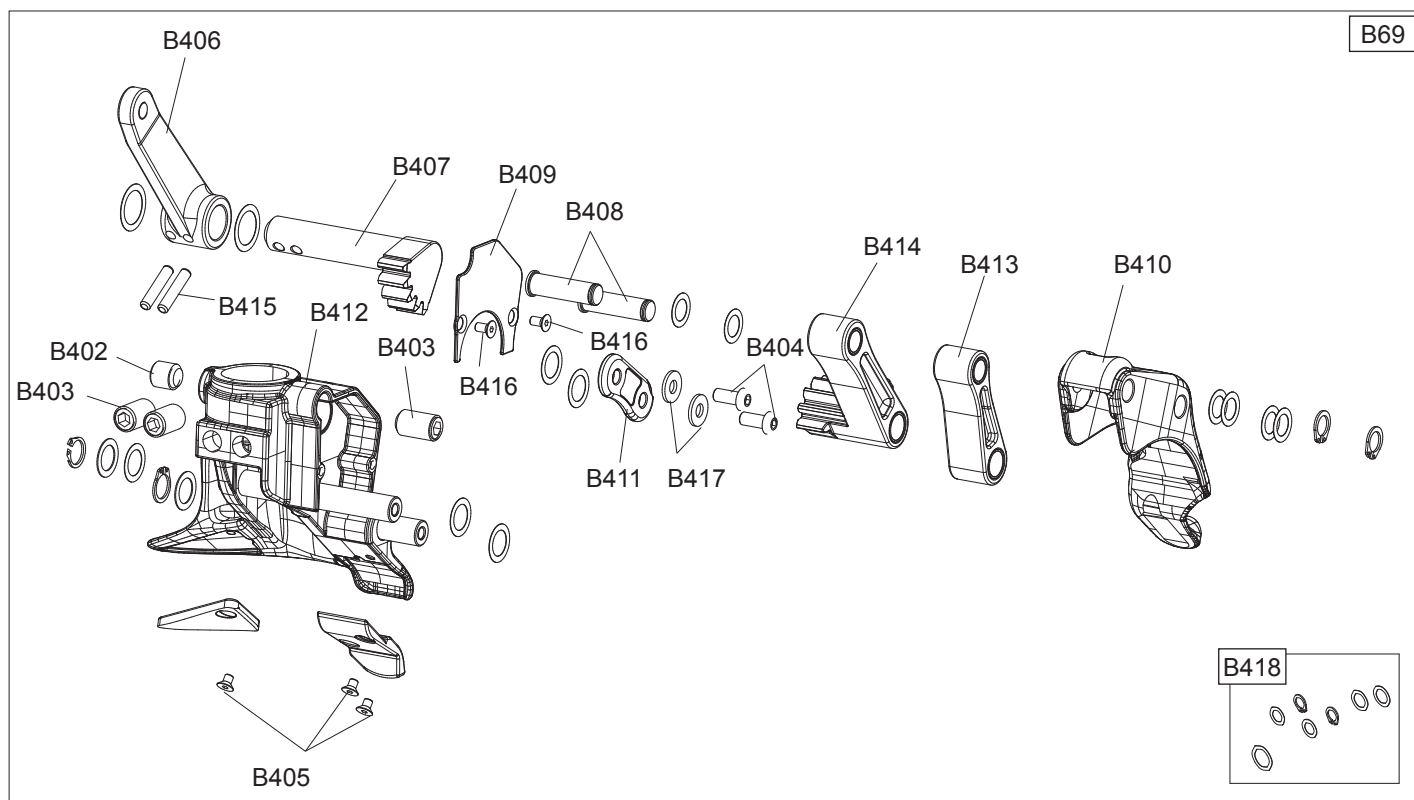
da matricola / from serial number 160562930

fino a matricola / up to serial number OMM111974



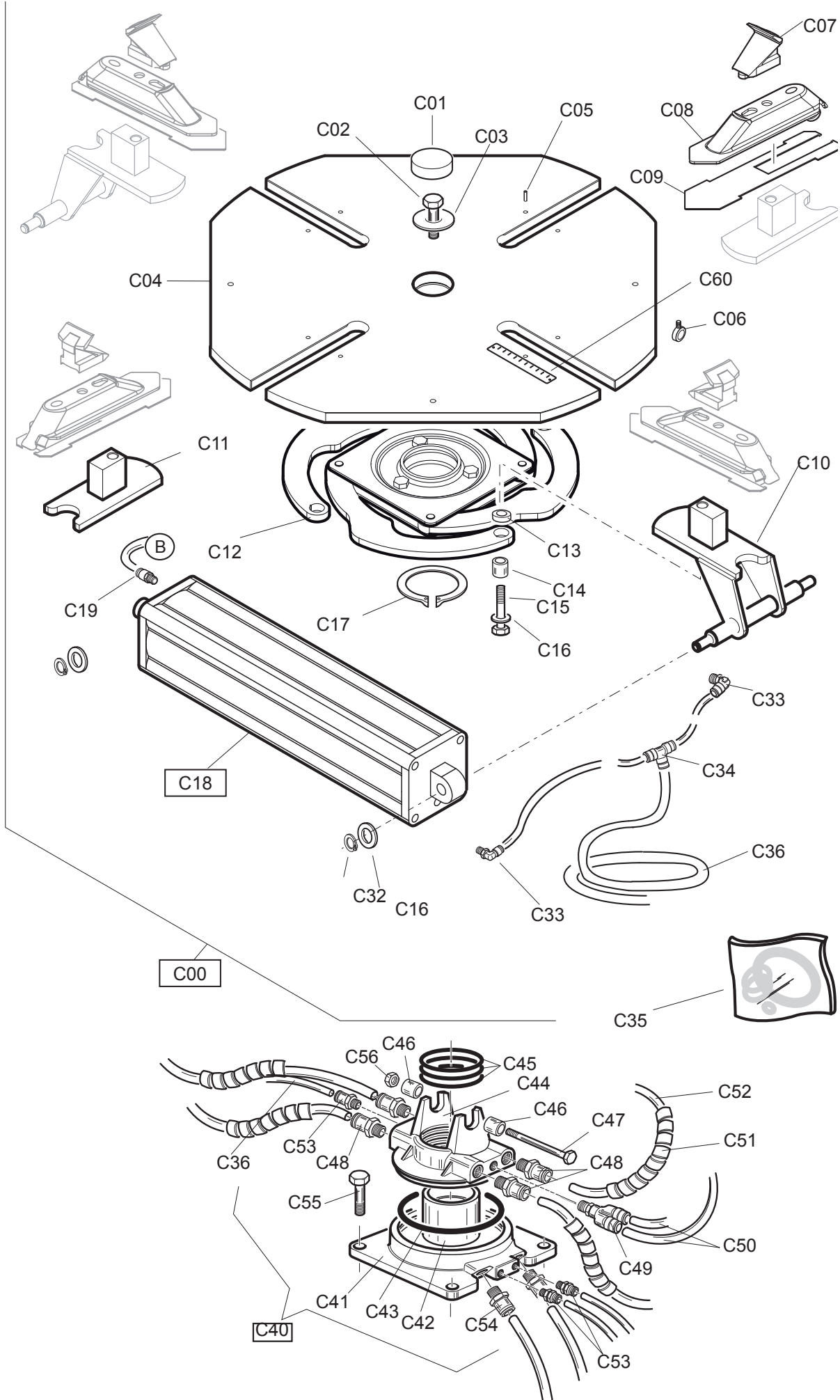
RS	REF	COD.	DESCRIZIONE	DESCRIPTION
	B69	5-121414	TORRETTA COMPLETA - BIANCA	COMPLETE HEAD - WHITE
	B302	2-01040	VITE STEI M12X12	SOCKET SET SCREW M12X12
	B303	2-02096	VITE STEI M12X20	SOCKET SET SCREW M12X20
	B304	2-03409	VITE TBEI ISO7380 M6X14	SCREW M6X14
	B305	2-03438	VITE TSPEI M4X6	SOCKET COUNTERSUNK SCREW M4X6
	B306	4-103256A	LEVA DI COMANDO	LEVER
	B307	4-103264B	INGRANAGGIO DI COMANDO	GEAR
	B308	4-103932	PERNO ANTERIORE	PIN
	B309	4-133948	COPERTURA INGRANAGGI	GEAR COVER
	B310	4-133955	GANCIO	LEVERLESS HOOK
	B311	4-133946	RINFORZO BIELLE	STIFFENING
	B312	4-133944	TORRETTA BASC. CON PERNI	HEAD WITH PINS
	B313	5-101265	BIELLA + BOCCOLE	TRACE
	B314	5-121416	BIELLA CON INGR. + BOCCOLE	TRACE
	B315	2-03737	SPINA CILINDR. D5 (H6)X24MM	PARALLEL PIN D5 (H6)X24MM
	B316	2-72205	VITE TSPEI M4X8	SOCKET COUNTERSUNK SCREW M4X8
	B317	453469	RONDELLA ACC.D. 6,3X14,8X1,5	SHIM WASHER 6.3X14.8X1.5
	B318	5-105825	RICAMBIO MINUTERIA TORRETTA LL	SHIM AND SPRING RING KIT
RS= RICAMBI CONSIGLIATI / RECOMMENDED SPARES				

AGGIORNAMENTI / UPDATE:



RS	REF	COD.	DESCRIZIONE	DESCRIPTION
RS	B69	5-122475	TORRETTA COMPLETA - BIANCA	COMPLETE HEAD - WHITE
	B402	2-01040	VITE STEI M12X12	SOCKET SET SCREW M12X12
	B403	2-02096	VITE STEI M12X20	SOCKET SET SCREW M12X20
	B404	2-03409	VITE TBEI ISO7380 M6X14	SCREW M6X14
	B405	2-03438	VITE TSPEI M4X6	SOCKET COUNTERSUNK SCREW M4X6
	B406	4-103256A	LEVA DI COMANDO	LEVER
	B407	4-103264B	INGRANAGGIO DI COMANDO	GEAR
	B408	4-103932	PERNO ANTERIORE	PIN
	B409	4-133948	COPERTURA INGRANAGGI	GEAR COVER
	B410	4-136109	GANCIO	LEVERLESS HOOK
	B411	4-133946	RINFORZO BIELLE	STIFFENING
	B412	4-136107	TORRETTA BASC. CON PERNI	HEAD WITH PINS
	B413	5-101265	BIELLA + BOCCOLE	TRACE
	B414	5-104772A	BIELLA CON INGR. + BOCCOLE	TRACE
	B415	2-03737	SPINA CILINDR. D5 (H6)X24MM	PARALLEL PIN D5 (H6)X24MM
	B416	2-72205	VITE TSPEI M4X8	SOCKET COUNTERSUNK SCREW M4X8
	B417	453469	RONDELLA ACC.D. 6,3X14,8X1,5	SHIM WASHER 6.3X14.8X1.5
	B418	5-105825	RICAMBIO MINUTERIA TORRETTA LL	SHIM AND SPRING RING KIT
RS= RICAMBI CONSIGLIATI / RECOMMENDED SPARES				

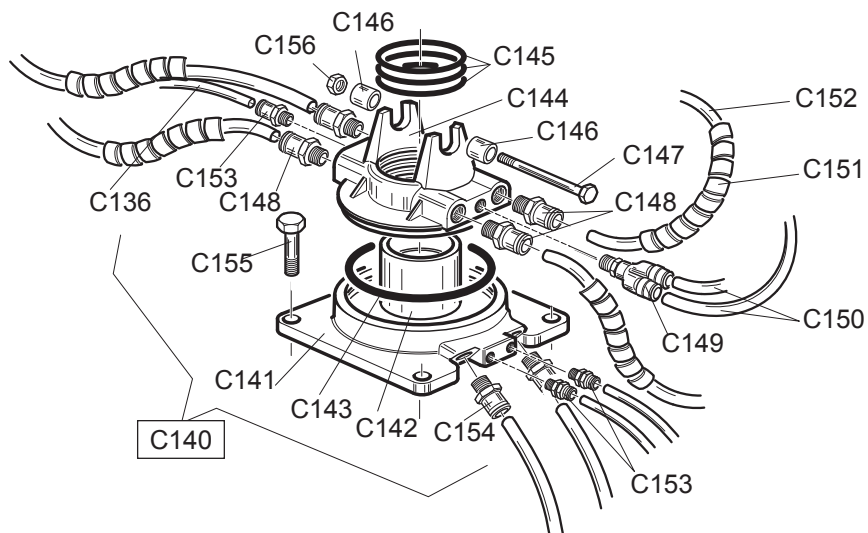
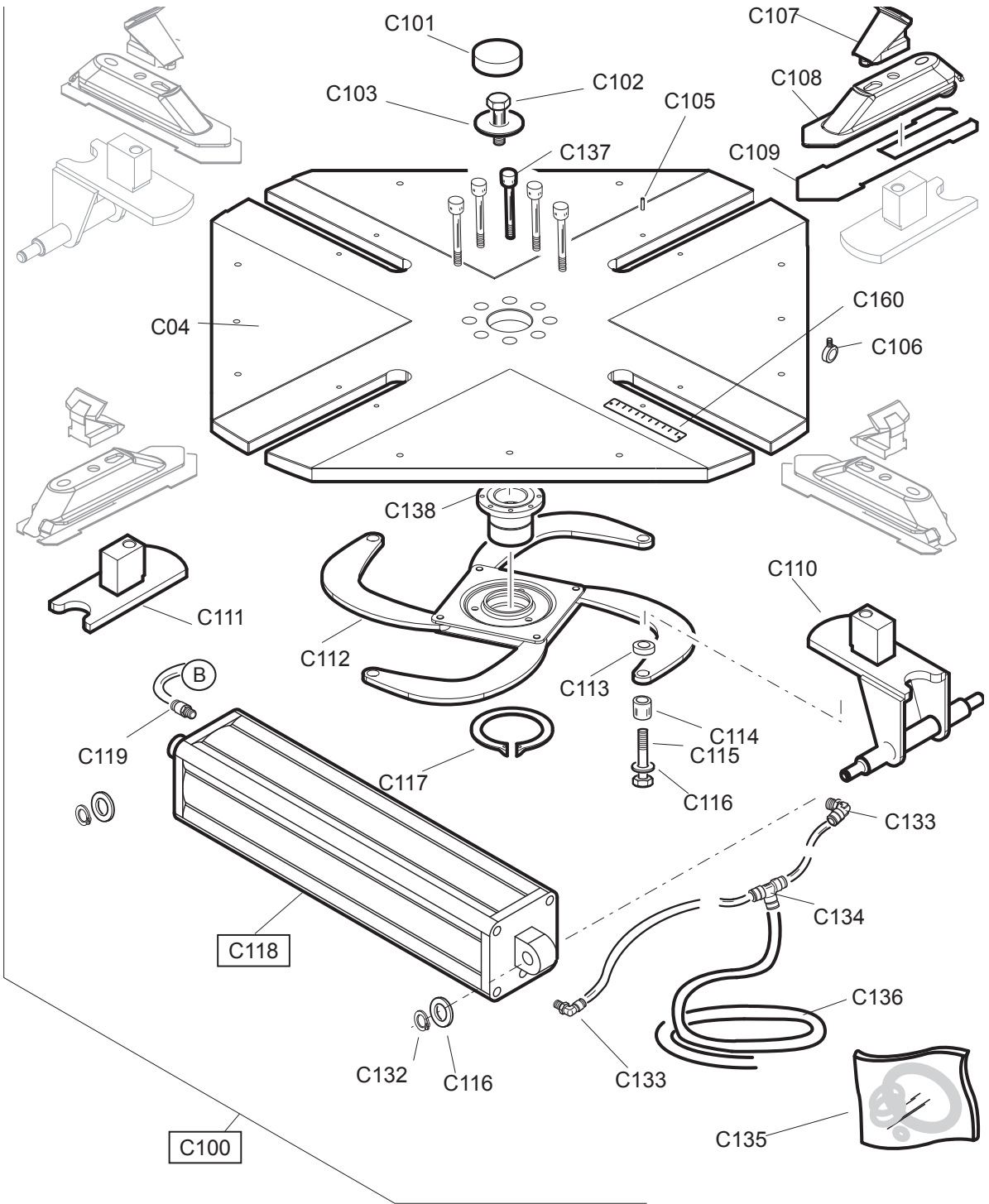
AGGIORNAMENTI / UPDATE:



	TAV. C	PIASTRA AUTOCENTRANTE T.I. / T.I. TURNTABLE _ 11" - 26"
--	---------------	--

RS	REF	COD.	DESCRIZIONE	DESCRIPTION
	C00	5-600943	AUTOCENTRANTE COMPLETO 11"-26"	COMPLETE TURNTABLE 11"-26"
	C01	3308152	TAPPO	TURNTABLE CAP
	C02	2-02857	VITE TE M16X35X1,5	SCREW M16X35X1,5
	C03	007800300	RONDELLA AUTOCENTRANTE	TURNTABLE WASHER
	C04	4-602956	PIASTRA AUTOCENTRANTE	TURNTABLE
	C05	2-71921	SPINA ELASTICA	SPLIT PIN
	C06	4-604182	GUIDA TUBI	HOSE GUIDE
RS	C07	003800100	GRIFFA BLOCCAGGIO	CLAMP
RS	C08	088401000	SCORREVOLE	SLIDE
RS	C09	4-600316C-1	LAMA COPRIASOLA	COVER BLADE
	C10	4-600474	SCORREVOLE CON PERNO	SLIDE WITH PIN
	C11	128400900	SCORREVOLE CON GUIDA	SLIDE WITH GUIDE
	C12	5-600087	FLANGIA DI COMANDO	CONTROL PLATE
RS	C13	002700700	DISTANZIALE BRACCIO	ARM SPACER
RS	C14	002700800	BOCCOLA	BUSH
RS	C15	2-03792	VITE TE M12X90	SCREW M12X90
RS	C16	2-00214	RONDELLA D.12	WASHER D.12
	C17	2-01283	ANELLO ELASTICO	SEEGER
RS	C18	5-600113	CILINDRO CON RACCORDI	CYLINDER WITH UNIONS
	C19	3-00464	RACCPN D G1/8 - T8	UNION D G1/8 - T8
	C32	2-00025	ANELLO ELASTICO D.12	SEEGER D.12
	C33	3-00049	RACCORDO L G1/8 - T8	UNION L G1/8 - T8
	C34	3-00025	RACCORDO T T8	UNION T T8
RS	C35	5-600860	KIT GUARNIZIONI CILINDRO D.75	COMPLETE GASKET BAG
	C36	009403400	TUBO	HOSE
	C40	5-600121	RACCORDO GIREVOLE COMPLETO	COMPLETE ROTATING UNION
	C41	000301800	ANELLO INTERNO COLLETTORE	INTERNAL ROTATING UNION RING
	C42	3-00647	BOCCOLA AUTOLUBRIFICANTE	LONGLIFE BUSH
	C43	044002000	GUARNIZIONE OR	O-RING
	C44	000301900A	ANELLO ESTERNO PER COLLETTORE	EXTERNAL ROTATING UNION RING
	C45	4260112	GUARNIZIONE OR	O-RING
	C46	001002600	BOCCOLA	BUSH
	C47	2-02594	VITE TE M6X90	SCREW M6X90
	C48	3-00462	RACCORDO D T10	UNION D T10
	C49	3-90631	RACCORDO Y T8	UNION Y T8
	C50	4-600590	TUBO	HOSE
	C51	4-600501	SPIRALE	SPIRAL
	C52	009405200	TUBO	HOSE
	C53	3-00477	RACCORDO D T8	UNION D T8
	C54	3-00482	RACCORDO D T14	UNION D T14
	C55	2-01772	VITE TE M10X60	SCREW M10X60
	C56	2-01979	DADO ES M6	NUT M6
	C60	4-602950	RIGHELLO	RULER

RS= RICAMBI CONSIGLIATI / RECOMMENDED SPARES

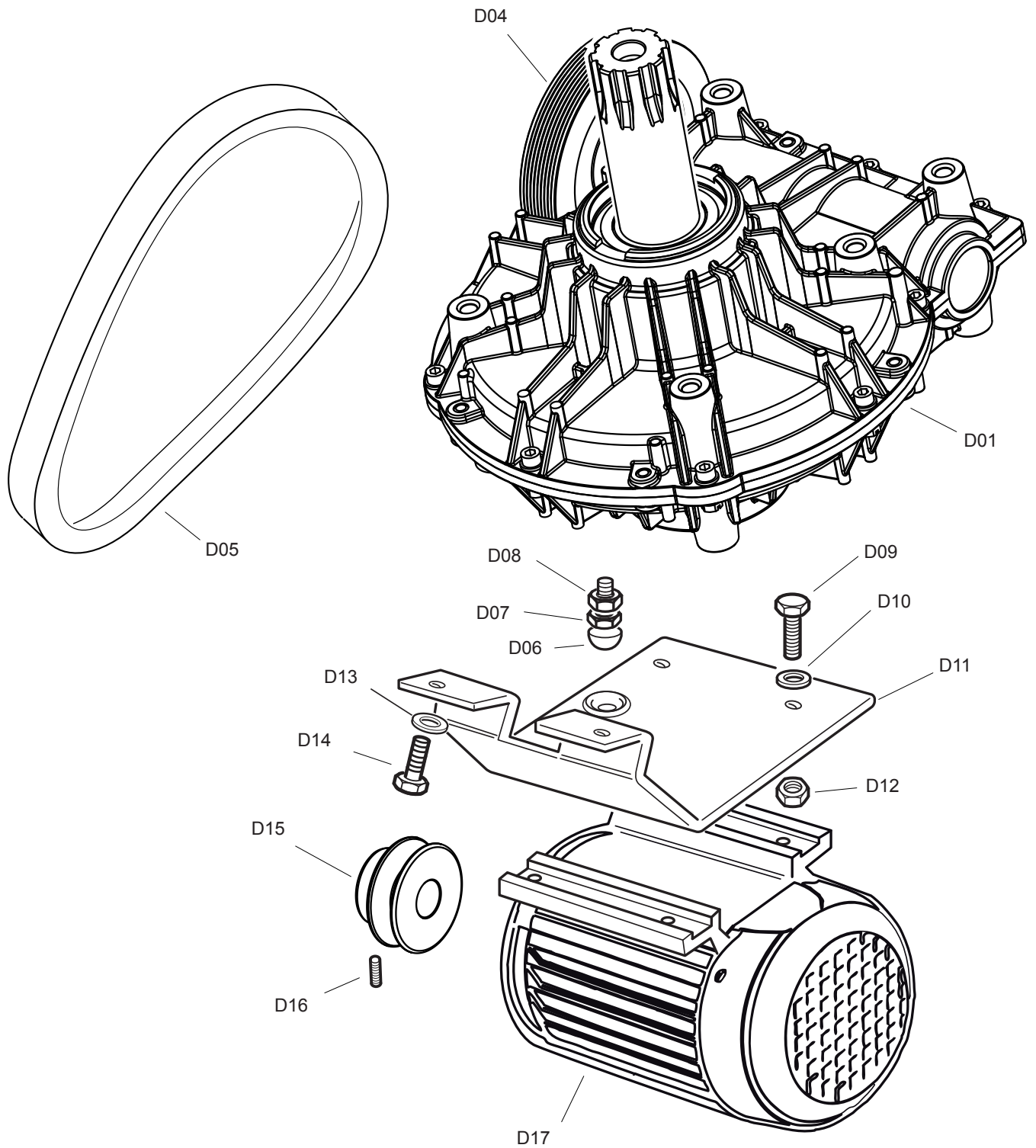


RS	REF	COD.	DESCRIZIONE	DESCRIPTION
	C100	5-600947	AUTOCENTRANTE COMPLETO 12"-28"	COMPLETE TURNTABLE 12"-28"
	C101	3308152	TAPPO	TURNTABLE CAP
	C102	2-02857	VITE TE M16X35X1,5	SCREW M16X35X1,5
	C103	007800300	RONDELLA AUTOCENTRANTE	TURNTABLE WASHER
	C104	4-602958A	PIASTRA AUTOCENTRANTE	TURNTABLE
	C105	2-71921	SPINA ELASTICA	SPLIT PIN
	C106	4-604182	GUIDA TUBI	HOSE GUIDE
RS	C107	003800100	GRIFFA BLOCCAGGIO	CLAMP
RS	C108	088401000	SCORREVOLE	SLIDE
RS	C109	4-600316C-1	LAMA COPRIASOLA	COVER BLADE
	C110	4-600881	SCORREVOLE CON PERNO	SLIDE WITH PIN
	C111	4-600928	SCORREVOLE CON GUIDA	SLIDE WITH GUIDE
RS	C112	5-600284	FLANGIA DI COMANDO	CONTROL PLATE
RS	C113	002700700	DISTANZIALE BRACCIO	ARM SPACER
RS	C114	002700800	BOCCOLA	BUSH
RS	C115	2-03792	VITE TE M12X90	SCREW M12X90
	C116	2-00214	RONDELLA D.12	WASHR D.12
	C117	2-01283	ANELLO ELASTICO	SEEGER
RS	C118	5-600113	CILINDRO CON RACCORDI	CYLINDER WITH UNIONS
	C119	3-00464	RACCPN D G1/8 - T8	UNION D G1/8 - T8
	C132	2-00025	ANELLO ELASTICO D.12	SEEGER D.12
	C133	3-00049	RACCORDO L G1/8 - T8	UNION L G1/8 - T8
	C134	3-00025	RACCORDO T T8	UNION T T8
RS	C135	5-600860	KIT GUARNIZIONI CILINDRO D.75	COMPLETE GASKET BAG
	C136	009403400	TUBO	HOSE
	C137	2-00320	VITE TCEI M8X20	SCREW M8X20
	C138	4-600958	MOZZO AVVITABILE	HUB
	C140	5-600121	RACCORDO GIREVOLE COMPLETO	COMPLETE ROTANTING UNION
	C141	000301800	ANELLO INTERNO COLLETTORE	INTERNAL ROTATING UNION RING
	C142	3-00647	BOCCOLA AUTOLUBRIFICANTE	LONGLIFE BUSH
	C143	044002000	GUARNIZIONE OR	O-RING
	C144	000301900A	ANELLO ESTERNO PER COLLETTORE	EXTERNAL ROTATING UNION RING
	C145	4260112	GUARNIZIONE OR	O-RING
	C146	001002600	BOCCOLA	BUSH
	C147	2-02594	VITE TE M6X90	SCREW M6X90
	C148	3-00462	RACCORDO D T10	UNION D T10
	C149	3-90631	RACCOROD Y T8	UNION Y T8
	C150	4-600590	TUBO	HOSE
	C151	4-600501	SPIRALE	SPIRAL
	C152	009405200	TUBO	HOSE
	C153	3-00477	RACCORDO D T8	UNION D T8
	C154	3-00482	RACCORDO D T14	UNION D T14
	C155	2-01772	VITE TE M10X60	SCREW M10X60
	C156	2-01979	DADO ES M6	NUT M6
	C160	4-602950	RIGHELLO	RULER

RS= RICAMBI CONSIGLIATI / RECOMMENDED SPARES

TAV. D

RIDUTTORE (fino a matricola 170668426)
GEARBOX (up to s.n. 170668426)

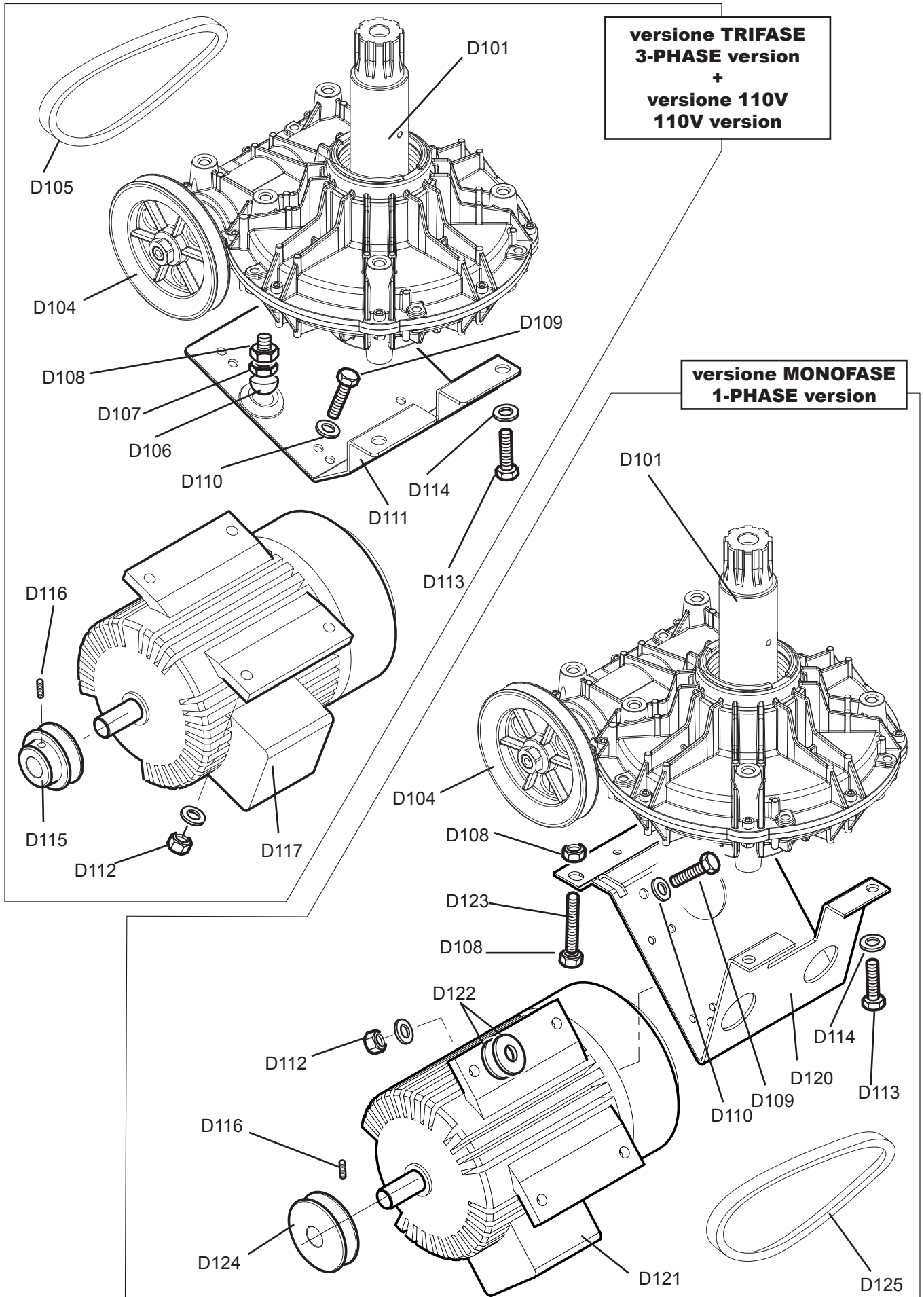


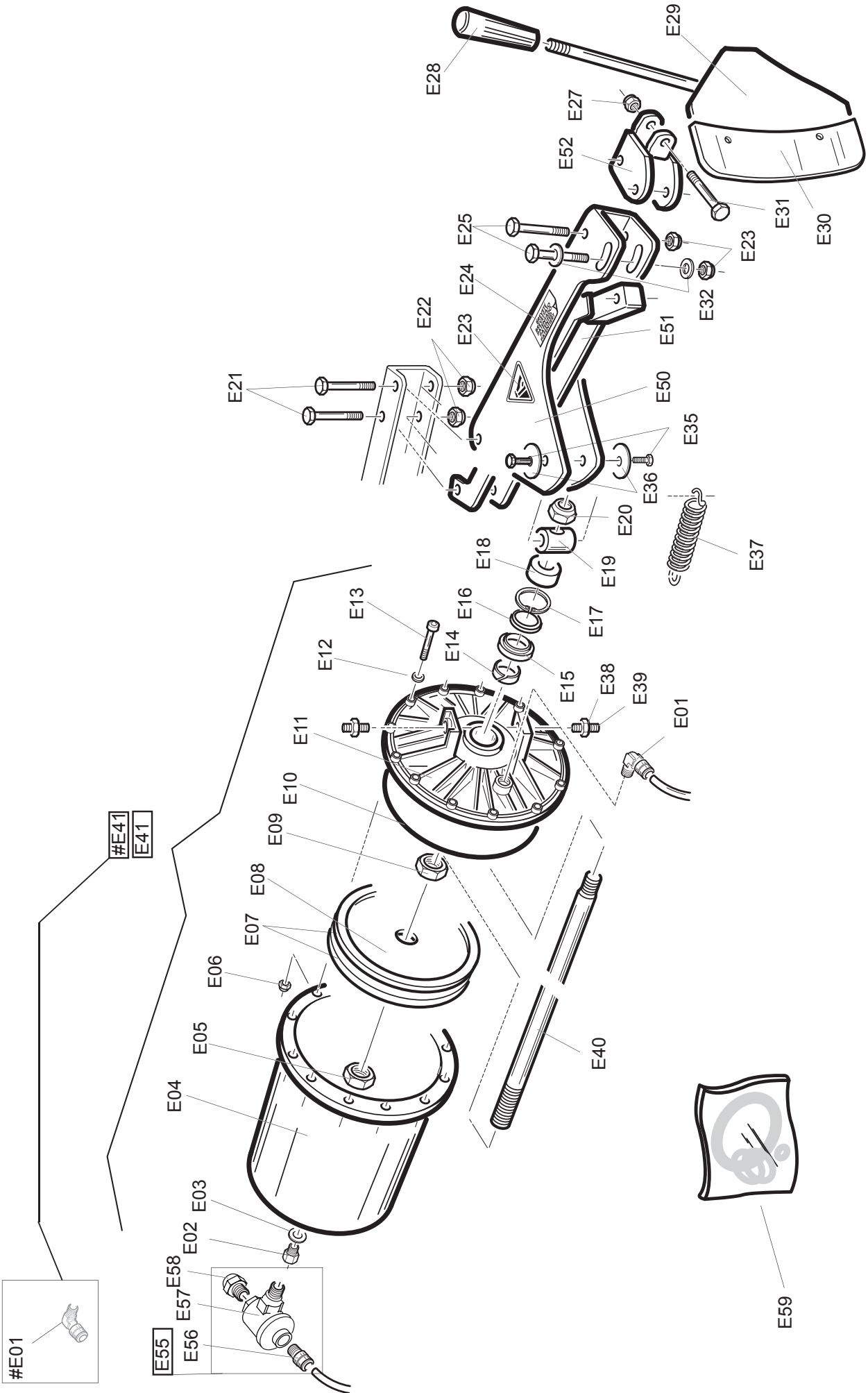
TAV. D1

RIDUTTORE (da matricola 170768427)
GEARBOX (from s.n. 170768427)

versione TRIFASE
3-PHASE version
+
versione 110V
110V version

versione MONOFASE
1-PHASE version





TAV. E

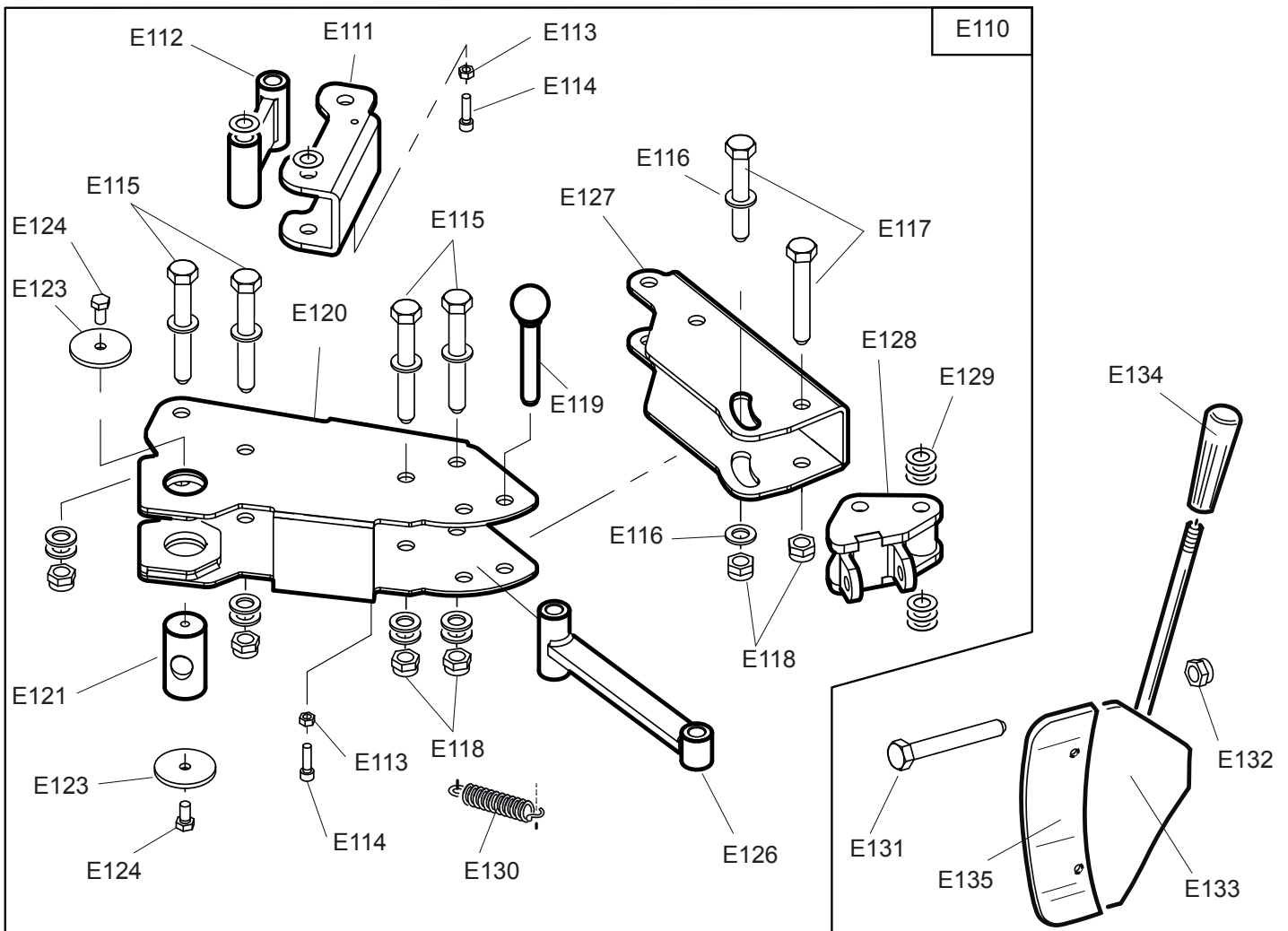
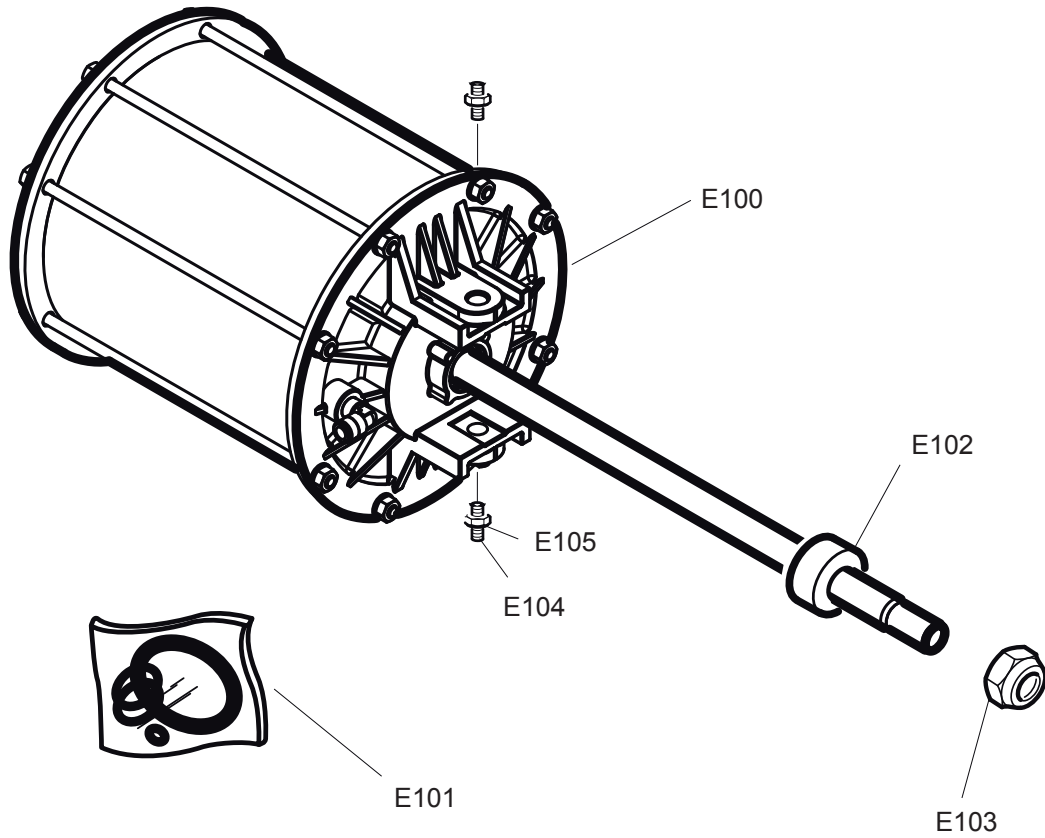
STALLONATORE / BEAD BREAKER
fino alla matricola / from serial number 120660093

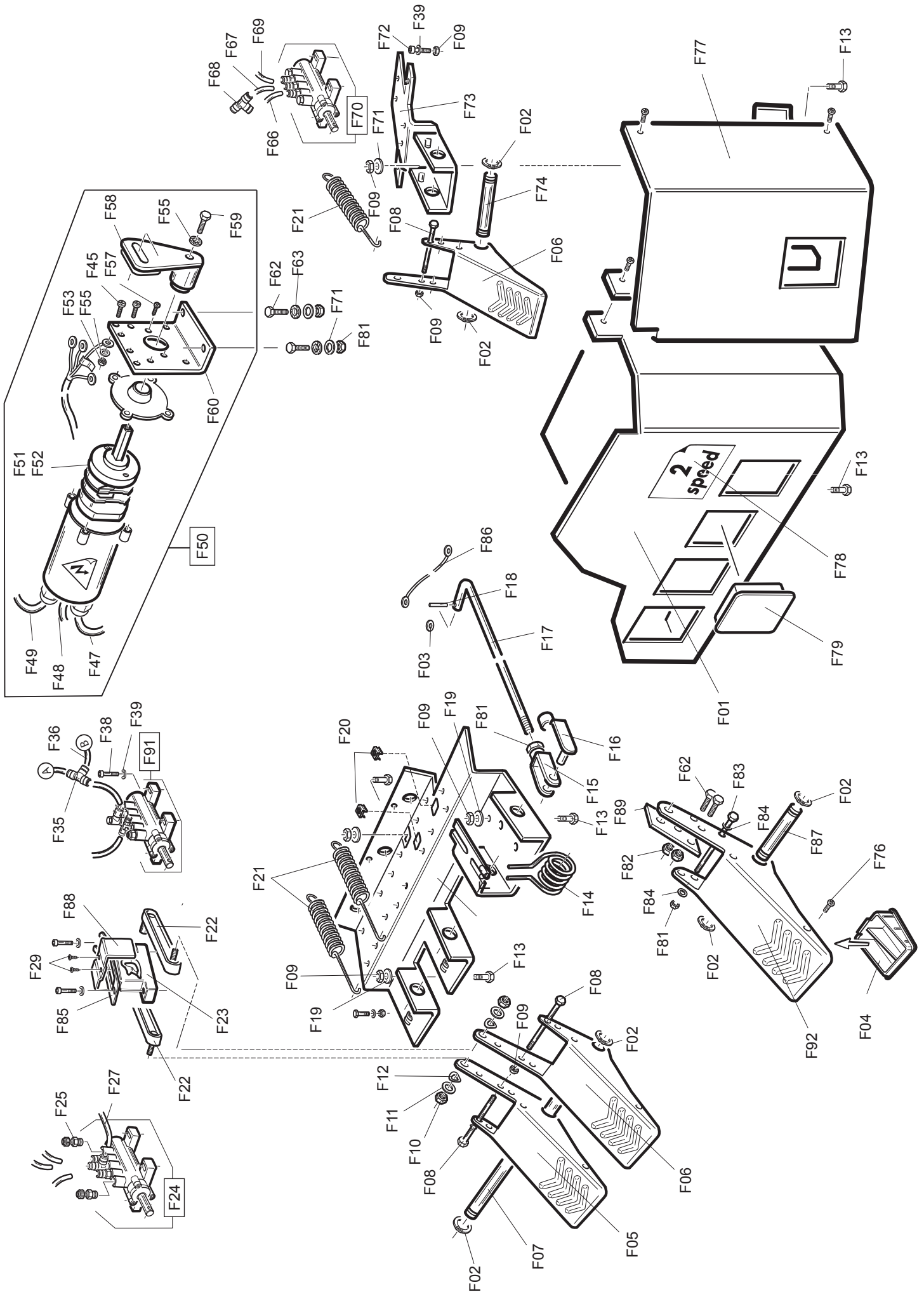
RS	REF	COD.	DESCRIZIONE	DESCRIPTION
	E01 (#4)	3-00221	RACCORDO L T8	UNION L T8
	E02	3-90656	RACCORDO RIDUZIONE	UNION
	E03	047801800	RONDELLA	WASHER
	E04	041301500	CAMICIA CILINDRO STALLONATORE	BEAD BREAKER CYLINDER LINER
	E05	042602800	DADO ESAGONALE 1/4"	NUT
	E06	2-02795	DADO M6	NUT M6
	E07	044003600	GUARNIZIONE	LIPPED GASKET
	E08	047100600	PISTONE CILINDRO STALLONATORE	BEAD BREAKER PISTON
	E09	2-00656	DADO M18X1,5	NUT M18
	E10	044003700	GUARNIZIONE OR	O-RING
	E11	043401600	FLANGIA CILINDRO STALLONATORE	FLANGE
	E12	2-00211	RONDELLA	WASHER
	E13	2-00310	VITE M6X20	SCREW M6X20
	E14	040303000	ANELLO GUIDA STELO	PIN GUIDE BUSH
	E15	044000300	GUARNIZIONE	GASKET
	E16	047806400	RONDELLA	WASHER
	E17	040302900	ANELLO SEEGER INTERNO	SEEGER RING
	E18	008900600	TAMPONE AMMORTIZZATORE	ABSORBER PLUG
	E19	4-602045	PERNO STALLONATORE	PIN
	E20	2-01174	DADO M18X1,5	NUT M18X1,5
	E21	4-600542	VITE FULCRO STALLONATORE	FULCRUM SCREW
	E22	2-71526	DADO M16	NUT M16
	E23	000103300	ADESIVO PERICOLO BRACCIO STALL	ADHESIVE DANGER
	E24	000114900	ADESIVO BREVETTATO	"PATENTED" ADHESIVE
	E25	4-600543	VITE SNODO STALLONATORE	SCREW
	E27	2-02706	DADO M14	NUT M14
	E28	005200211	POMOLO	HANDLE
	E29	126100400	PALETTA STALLONATORE	BEAD BREAKER BLADE
	E30	080019200	PROTEZIONE PALETTA	BLADE PROTECTION
	E31	2-00444	VITE M14X80	SCREW M14X80
	E32	2-01045	RONDELLA	WASHER
	E35	2-00379	VITE M10X20	SCREW M10X20
	E36	4-600533	RONDELLA BOCCOLA STALLONATORE	WASHER
	E37	005600700	MOLLA BRACCIO STALLONATORE	BEAD BREAKER ARM SPRING
	E38	2-00941	DADO M14	NUT M14
	E39	2-02690	VITE STEI M14X40	SCREW STEI M14X40
	E40	4-600385A	STELO STALLONATORE	CYLINDER SHAFT
	E41 (#4)	5-600094	CILINDRO STALLON DOPPIO EFFETTO	BEAD BREAKER CYLINDER (COMPLETE) (DOUBLE EFFECT)
	E41	5-600427	CILINDRO STALLON DOPPIO EFFETTO	BEAD BREAKER CYLINDER (COMPLETE) (DOUBLE EFFECT)
	E50 (#5)	4-600510/90	BRACCIO STALLONATORE	BEAD BREAKER ARM
	E50	4-600922/90	BRACCIO STALLONATORE	BEAD BREAKER ARM
	E51 (#5)	4-600467/90	RINVIO STALLONATORE	BLADE DRIVING ROD
	E51	4-600927/90	RINVIO STALLONATORE	BLADE DRIVING ROD
	E52 (#5)	4-600384/90	FULCRO APPOGGIO PALETTA	BLADE SUPPORT
	E52	4-600925/90	FULCRO APPOGGIO PALETTA	BLADE SUPPORT
	E55	5-600426	VALVOLA SCARICO RAPIDO	QUICK RELEASE
	E56	3-00464	RACCORDO	UNION
	E57	109800200	VALVOLA	VALVE
	E58	043300100	SILENZIATORE	SOUND REDUCING
	E59	900238212	KIT GUARNIZIONI CILINDRO STALL DE	COMPLETE BEAD BREAK. CYL.GASKE

RS= RICAMBI CONSIGLIATI / RECOMMENDED SPARES
AGGIORNAMENTI / UPDATE:

(#4): fino alla matr. / up to serial number 091160030

(#5): fino alla matr. / up to serial number 070160006



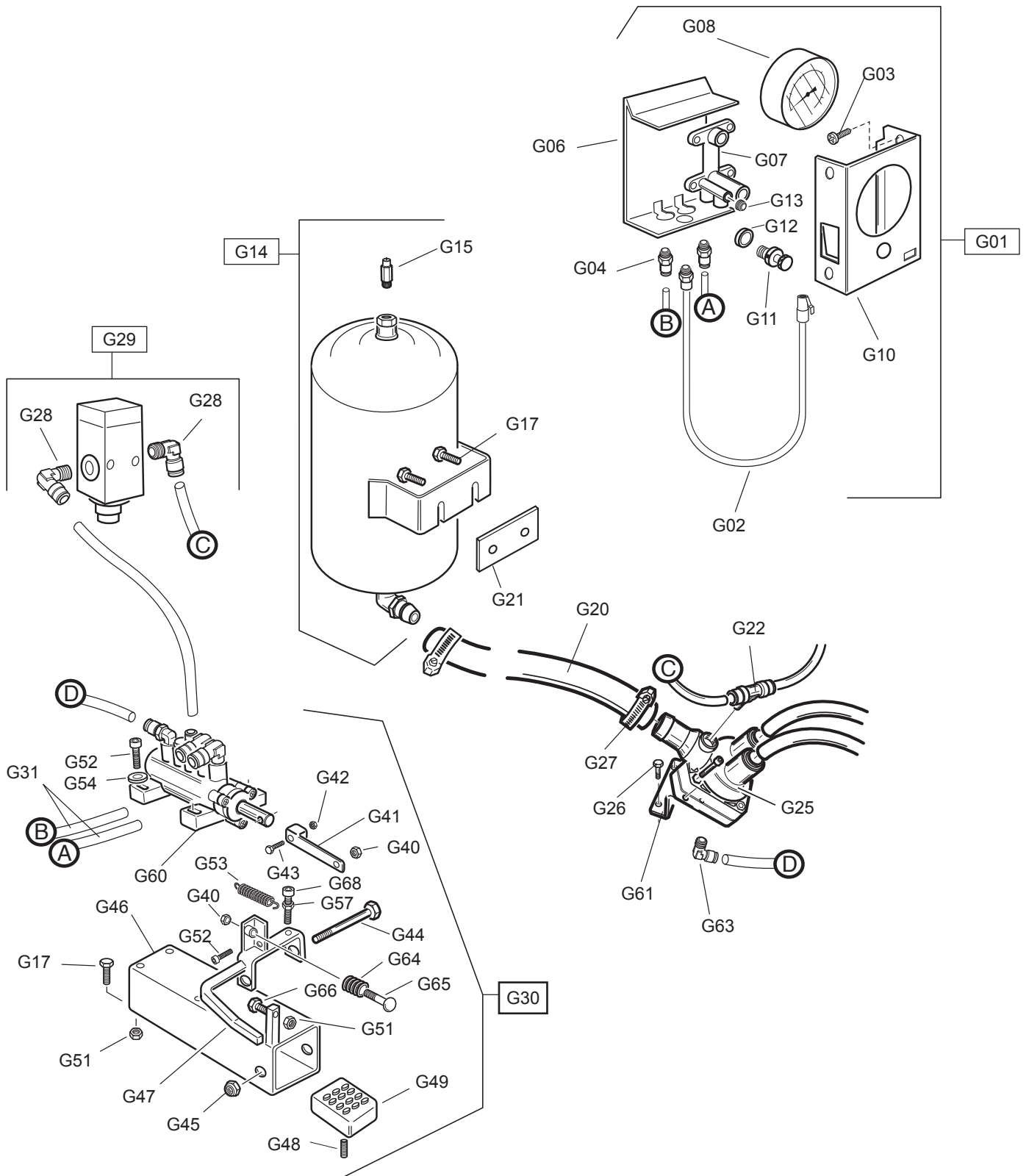


	TAV. F	PEDALIERA / PEDAL UNIT
--	---------------	-------------------------------

RS	REF	COD.	DESCRIZIONE	DESCRIPTION
	F01	4-600411/00	CARTER PEDALIERA 4P	PEDAL COVER 4P
	F02	2-00025	ANELLO EL. D12	SEEGER RING
	F03	2-00211	RONDELLA	WASHER
	F04	3314621	TAPPO PEDALE INVERTITORE	PHASE REVERSE PEDAL CUP
	F05	006402301/00	PEDALE SX	PEDAL (L)
	F06	006402101/00	PEDALE DX	PEDAL (R)
	F07	4-600416	PERNO LUNGO PEDALIERA 4P	PEDALS LONG PIN
	F08	2-00717	VITE M6X60	SCREW M6X60
	F09	2-01979	DADO M6	NUT M6
	F10	2-01137	DADO M8	NUT M8
	F11	2-00212	RONDELLA	WASHER
	F12	2-02247	ROSETTA EL. D8	WASHER
	F13	2-00711	VITE SPEI M6X16	SCREW SPEI M6X16
RS	F14	4-602883	MOLLA PEDALE INVERTITORE 2 VEL	REVERSE PEDAL SPRING 2SPEED
	F15	2-94013	FORCELLA M6	FORK M6
	F16	2-94014	CLIPS	CLIPS
	F17	4-600420	LEVA RINVIO INVERTITORE	INVERTER LEVEL
	F18	2-02522	COPIGLIA	SPLIT PIN
	F19	2-00679	ROSETTA	WASHER
	F20	042602400	DADO IN GABBIA M6	NUT
RS	F21	4-604131	MOLLA RITORNO PEDALI	PEDAL SPRING
	F22	425014	BIELLA CAMME	CONNECTING ROD
	F23	5-650296	CAMMA DOPPIA + SPINA	COMPLETE DOUBLE CAM
RS	F24	069803700	VALVOLA RIBALTAM CON RACC	VALVE WITH UNIONS
	F27	009415200	TUBO COLLEG. VALVOLE 6X4 L0,35	CONNECTING VALVE HOSE
	F31	009404000	TUBO 8X6 L0,35	HOSE 8X6 L 0,35
	F36	5-600043	TUBO D6 (SOLO CON IPL - OPT)	HOSE D6 (ONLY WITH IPL-OPT)
	F38	2-00310	VITE TCEI M 6X 20	SCREW M6X20
	F39	2-00211	RONDELLA	WASHER
	F47	5-600066	CAVO ALIMENTAZIONE TRIFASE	CONNECTING CABLE
	F48	125518300	CAVO 2 TRIFASE INVERTITORE 2 V	2 SP REVERSE THREE PHASE CABLE 2
	F49	125518400	CAVO 1 TRIFASE INVERTITORE 2 V	2 SP REVERSE THREE PHASE CABLE 1
RS	F50_A	5-124248	GRUPPO INVERTITORE 2V	2 SPEED REVERSE (COMPLETE)
RS	F50_B	063904300	GRUPPO INVERTITORE MONOFASE	1-PHASE COMPLETE REVERSE
	F51_A	3-90133	INVERTITORE 2V (FRUTTO) 2V	2 SPEED REVERSE
	F51_B	3-90132	INVERTITORE MONOFASE (FRUTTO)	PHASE REVERSE
	F52_A	5-600842	KIT FRUTTO INVERTITORE 2V	2 SPEED REVERSE KIT
	F52_B	5-600847	KIT FRUTTO INVERTITORE MONOFASE	1-PHASE REVERSE KIT
	F53	2-00143	DADO M4	NUT M4
	F55	2-71541	ROSETTA EL. D4	WASHER
	F56	2-00605	VITE TCIC M 4 X10	SCREW M 4X10
	F57	2-00579	VITE TCIC M 3 X10	SCREW M 3X10
	F58	3310859	LEVA INVERTITORE 2V	2 SPEED REVERSE LEVER
	F59	2-00349	VITE TE M 4X 12	SCREW M 4X12
	F60	008803100	SUPPORTO INVERTITORE	REVERSE SUPPORT
	F62	2-00361	VITE M6X16	SCREW M6X16
	F63	2-00211	RONDELLA	WASHER

RS= RICAMBI CONSIGLIATI / RECOMMENDED SPARES

AGGIORNAMENTI / UPDATE:



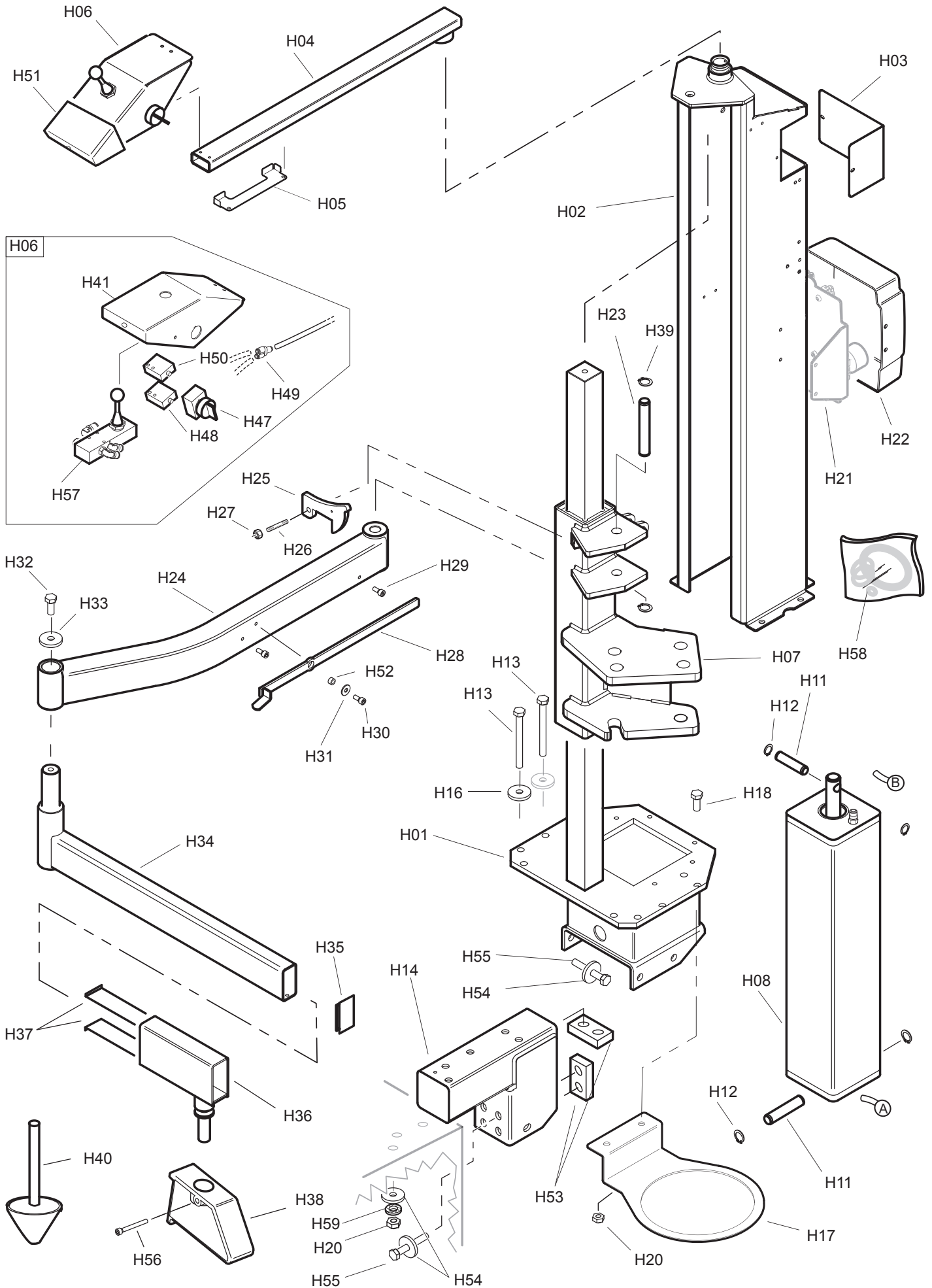
	TAV G	GRUPPO T.I. / T.I. UNIT
--	--------------	--------------------------------

RS	REF	COD.	DESCRIZIONE	DESCRIPTION
	G01	063967201	GRUPPO LETTURA GONFIAGGIO	COMPLETE INFLATING UNIT
RS	G02	069403800	TUBO USCITA ARIA T.I.	AIR HOSE TI
	G03	049911200	VITE TBEI M6x10	SCREW TBEI M6x10
	G04	3-00464	RACCORDO D T8	UNION T8
	G06	004815801/00	LAMIERA POSTERIORE SCAT. GONF	REAR BOX
	G07	3315381	RIPARTITORE CENTR. GONFIAGGIO	DISTRIBUTION FRAME
RS	G08	3-00490	MANOMETRO CE D.80	MANOMETER CE D90
	G10	004815701/00	LAMIERA ANTERIORE SCAT. GONF	FRONT BOX
	G11	235463	VALVOLA PULSANTE SGONF	PUSH BUTTON
	G12	047802400	RONDELLA	WASHER
	G13	3-00198	RACCORDO TAPPO	PLUG UNION
	G14	4-600032	SERBATOIO T.I.	TANK TI
	G15	3-01889	VALVOLA SICUR.3/8	SECURITY VALVE
	G17	2-00372	VITE TE M 8X 16	SCREW M 8X16
RS	G20	4-600513	TUBO 1" 10 BAR	HOSE 1" 10 BAR
	G21	4-600031	PIATTO	PLATE
	G22	4-402799	RACCORDO -T-T8	UNION T T8
RS	G25	063972900	VALVOLA GONFIAGGIO COMPLETA	COMPLETE INFLATING VALVE
	G26	2-00361	VITE TE M 6X 16	SCREW M6X16
RS	G27	042801600	FASCETTA D.14	LOCKING BAND
	G28	3-00221	RACCORDO -L-T8	UNION L T8
	G29	063984100	VALVOLA LIMITATRICE COMPLETA	COMPLETE PRESSURE REGULATOR
	G30	063932700	GRUPPO PEDALE T.I.	T.I. COMPLETE PEDAL
	G31	4-138744	TUBO DOPPIO GONFIAGGIO	INFLATING DOUBLE HOSE
	G40	2-01979	DADO M 6	NUT M6
	G41	3009407	BIELLA COMANDO VALVOLA	CONNECTING ROD
	G42	2-02883	DADO M 4	NUT M4
	G43	2-02620	VITE TE M 4X 30	SCREW M4X30
	G44	2-03793	VITE TE M12X 85	SCREW M 12X85
	G45	2-01276	DADO M12	NUT M12
	G46 (#1)	128800101	SUPPORTO PEDALE T.I.	PEDAL SUPPORT
	G46	4-602185	SUPPORTO PEDALE T.I	PEDAL SUPPORT
	G47	126400100	PEDALE T.I.	T.I. PEDAL
	G48	2-00528	VITE STEI M 6X 8	SCREW M6X8
	G49	8000026	PEDALE IN PLASTICA	PLASTIC PEDAL
	G51	2-00723	DADO M 8	NUT M8
	G52	2-00310	VITE TCEI M 6X 20	SCREW M6X20
	G53	005600400	MOLLA RITORNO PEDALE	PEDAL SPRING
	G54	2-00211	RONDELLA	WASHER
	G57	2-00146	DADO M 6	NUT M6
	G59	2-02886	VITE TTL M 6X 45	SCREW
RS	G60	5-600493	VALVOLA DIST.TI+TUBO LETT	COMPLETE DISTRIBUTOR
	G61	008603700	STAFFA VALVOLA T.I.	SUPPORT FOR VALVE 1"
	G63	4-402798	RACCORDO L -T6	UNION L T6
	G64	3-03892	MOLLA ISO10243 20x25	SPRING
	G65	2-02886	VITE TTL M6x45	SCREW M6x45
	G66	2-00374	VITE TE M8x25	SCREW M8x25
	G68	2-00312	VITE TCEI M6x25	SCREW M6x25

RS= RICAMBI CONSIGLIATI / RECOMMENDED SPARES

AGGIORNAMENTI / UPDATE:

(#1): fino alla matr. / up to serial number 100960206

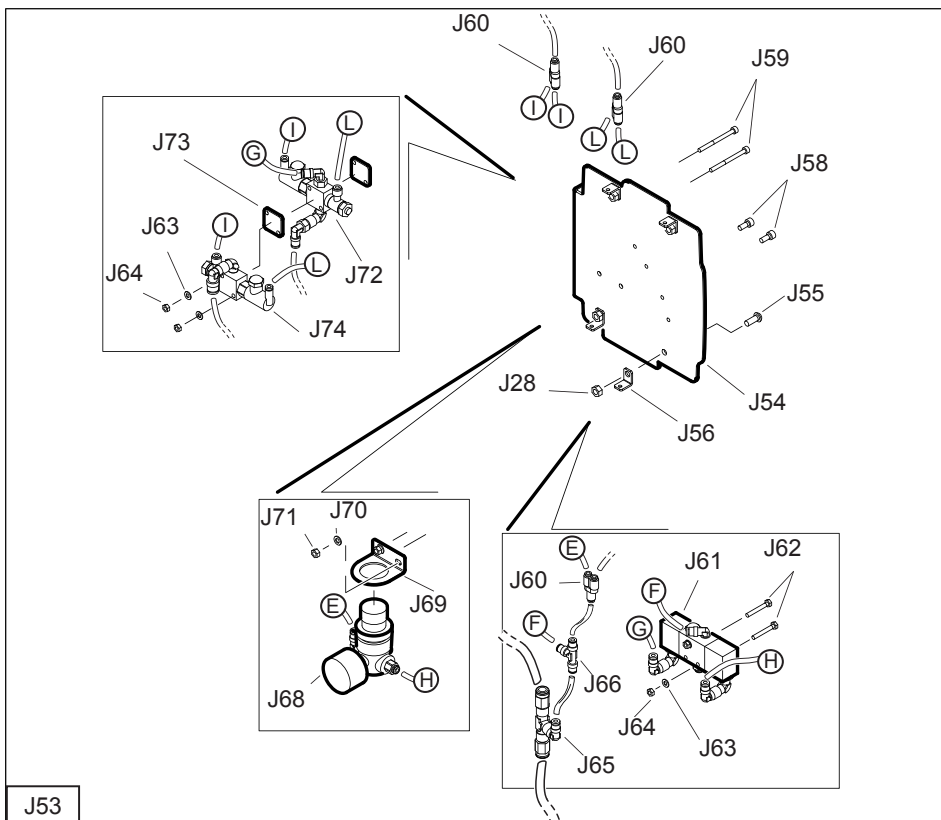
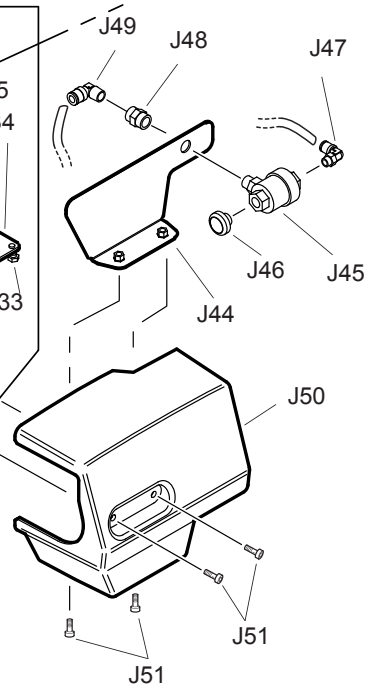
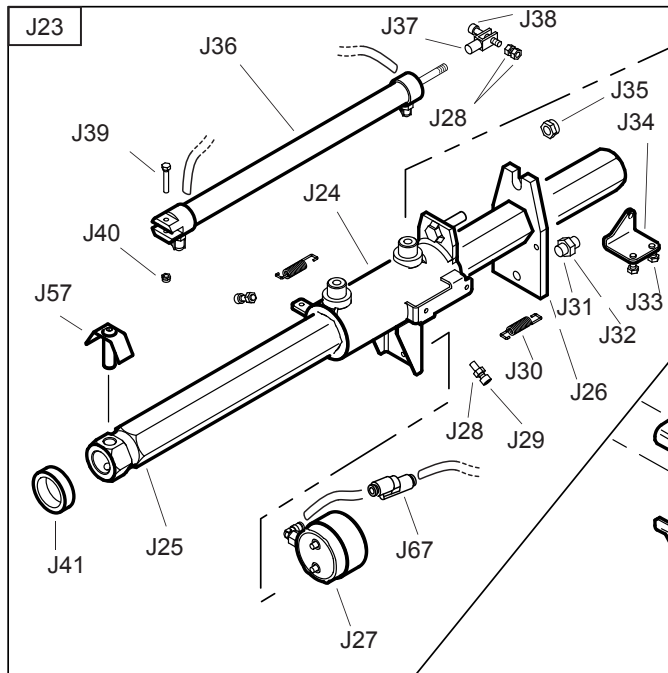
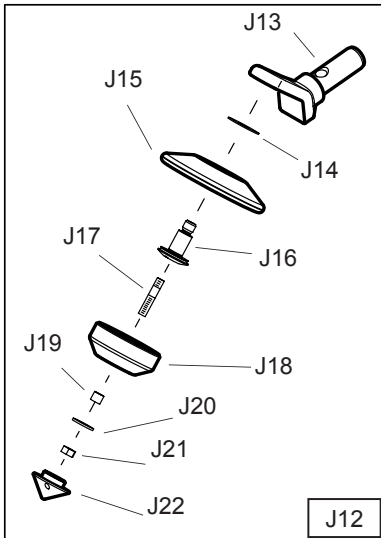
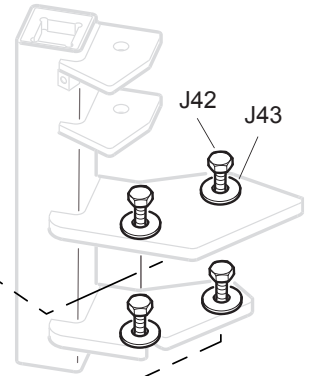
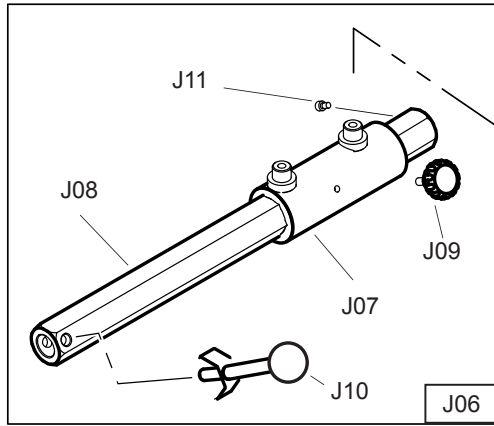
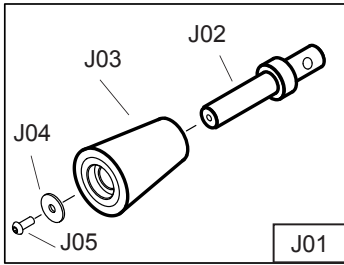


	TAV. H	STRUTTURA TPH / TPH UNIT
--	---------------	---------------------------------

RS	REF	COD.	DESCRIZIONE	DESCRIPTION
	H01	120802201/00	BASAMENTO TPH	TPH SUPPORT
	H02 (§3)	4-602118/00	CARTER STRUTTURALE	STRUCTURAL CASE
	H02 (§6)	4-602526/00	CARTER STRUTTURALE	STRUCTURAL CASE
	H02	4-603487/00	CARTER STRUTTURALE	STRUCTURAL CASE
	H03	4-600191/00	COPERCHIO POSTERIORE	BACK COVER
	H04 (§3)	4-602037B/00	BRACCIO COMANDI	ARM
	H04	4-602037/00	BRACCIO COMANDI	ARM
	H05	4-601932/00	CONTENITORE LEVETTA	LEVER SUPPORT
	H06 (§4)	5-600439	CONSOLLE DI COMANDO	CONTROL PANEL
	H06	5-600620	CONSOLLE DI COMANDO	CONTROL PANEL
	H07 (§1)	4-601871/00A	SUPPORTO SCORREVOLE DX	RIGHT SLIDE SUPPORT
	H07 (§2)	4-601871/00B	SUPPORTO SCORREVOLE DX	RIGHT SLIDE SUPPORT
	H07	4-601871/00C	SUPPORTO SCORREVOLE DX	RIGHT SLIDE SUPPORT
	H08	3-03742	CILINDRO COMPLETO PRESSORI	COMPLETE CYLINDER
	H11	006513300	PERNO INFERIORE FULCRO CILINDRO	CYLINDER PIN
	H12	2-00026	ANELLO EL. D.14	SEEGER D.14
	H13	2-01065	VITE TE M10X110	SCREW M10X110
	H14	4-601867/00	STAFFA DI FISSAGGIO SU CARCASSA	BRACKET
	H16	2-00213	RONDELLA D.10	WASHER D10
	H17	4-601886	PORTAGRASSO	GREASE SUPPORT
	H18	2-00380	VITE TE M10X25	SCREW M10X25
	H20	2-91726	DADO ES. N. M10	NUT M10
	H21	5-600443	CENTRALINA PNEUMATICA	PNEUMATIC CONTROL UNIT
	H22	4-601899	CARTER CENTRALINA	CONTROL UNIT CASE
	H23	006500200	PERNO FULCRO BRACCIO	PIN
	H24	4-601896/00	BRACCIO ANGOLATO	ARM
	H25 (§2)	5-600450	GANCIO DI BLOCCAGGIO BRACCIO	HOOK
	H25	5-600450	GANCIO DI BLOCCAGGIO BRACCIO	HOOK
	H26 (§2)	2-02925	VITE PRIGIONIERO M8x30	SCREW
	H26	2-80097	VITE PRIGIONIERO M10x30	SCREW
	H27 (§2)	2-01137	DADO ES. AUTOBL M8	SELF LOCKING NUT M8
	H27	2-71525	DADO ES. AUTOBL M10	SELF LOCKING NUT M8
	H28	4-600494-1	LEVA DI SGANCIO	LEVER
	H29	2-00308	VITE TCEI M6X10	SCREW M6X10
	H30	2-00728	VITE TCEI M6X14	SCREW M6X14
	H31	2-00679	ROSETTA D.6	WASHER D.6
	H32	2-00379	VITE TE M10X20	SCREW M10X20
	H33	2-80081	ROSETTA D.10	WASHER D.10
	H34	4-600401-1	BRACCIO PREMITALLONE	ARM
	H35	3-01555	TAPPO	CAP
	H36	128807900	SUPPORTO PREMITALLONE	SUPPORT
	H37	008400700	SLITTA SCORREVOLE UTENSILE	SLIDE
RS= RICAMBI CONSIGLIATI / RECOMMENDED SPARES				

AGGIORNAMENTI / UPDATE:

- (§1): fino alla matricola / up to serial number 101160232
 (§2): fino alla matricola / up to serial number 110560042
 (§3): fino alla matricola / up to serial number 110660429
 (§4): fino alla matricola / up to serial number 110560196
 (§5): dalla matricola / from serial number 110560197
 (§6): dalla matricola / from serial number 150560072

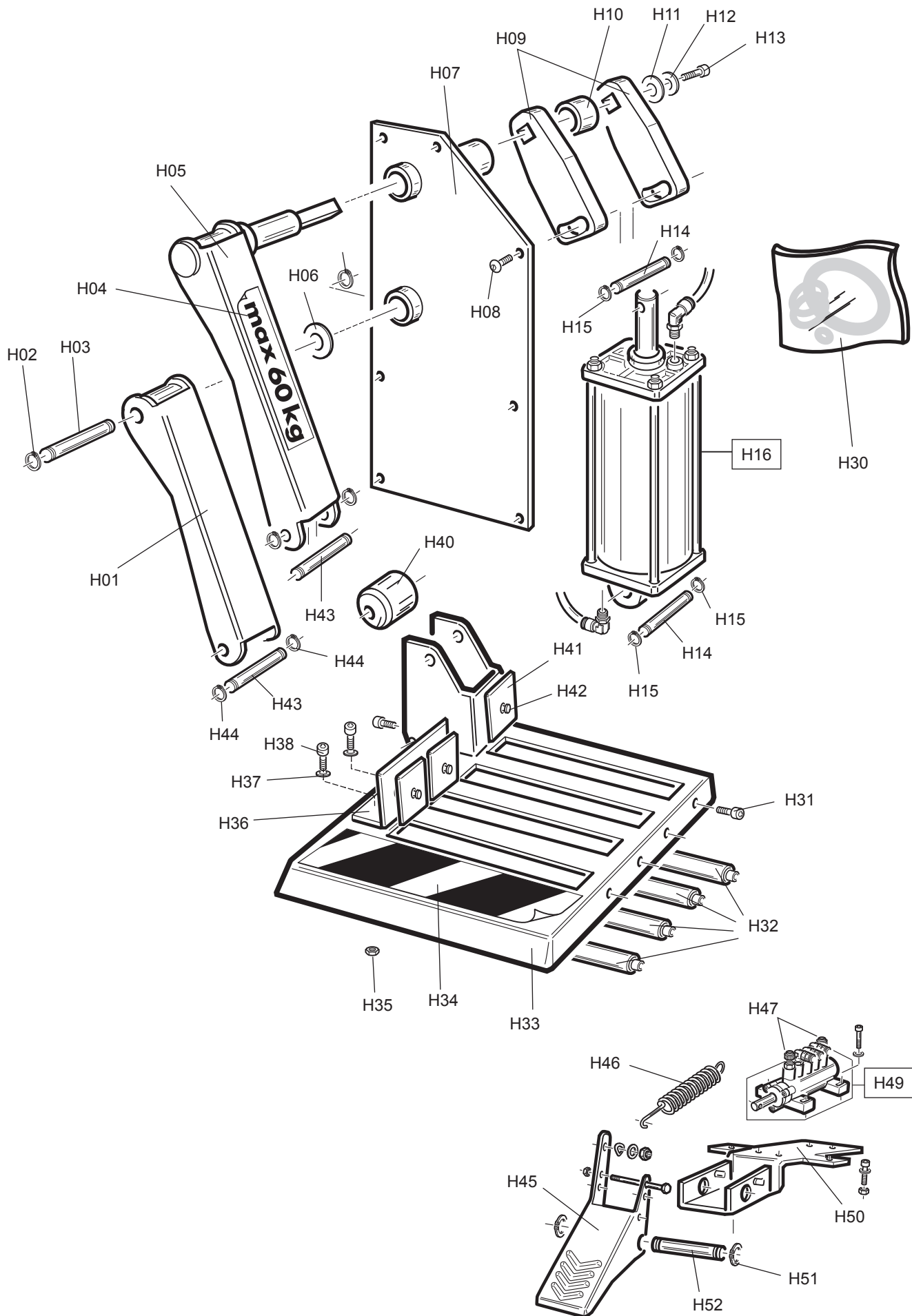


RS	REF	COD.	DESCRIZIONE	DESCRIPTION
	J01	063910000	RULLO PREMITALLONE COMPLETO	COMPLETE ROLLER
	J02	4-602680	PERNO PER RULLO	ROLLER PIN
	J03 (§)	007902600	RULLO PREMITALLONE	ROLLER
	J03	4-103215	RULLO PREMITALLONE	ROLLER
	J04	047802200	ROSETTA D8	WASHER D.8
	J05	2-02161	VITE TBEI M8X20	SCREW M8X20
	J06	5-600436	PREMITALLONE COMPLETO	BEAD PRESS DEVICE
	J07	4-601873/00	GUIDA PREMITALLONE	GUIDE
	J08	4-601857	ASTA PREMITALLONE	BEAD PRESS SHAFT
	J09	045201400	MANOPOLA A LOBI	HANDLE
	J10	5-600437	PERNO BLOCCAGGIO CON POMOLO	LOCKER PIN
	J11	2-00308	VITE TCEI M8X20	SCREW M8X20
	J12	5-600435	DISCO ALZATALLONE COMPLETO	COMPLETE BEAD LIFTER ROLLER
	J13	4-601863	SUPPORTO DISCO ALZATALLONE	SUPPORT
	J14	344208	RONDELLA SPECIALE	WASHER
	J15	4-601869	DISCO ALZATALLONE	ROLLER
	J16	4-601865	PERNO PORTADISCO	PIN
	J17	2-02925	PRIGIONIERO M8X30	SCREW
	J18	4-601866	TASTATORE	TOUCHER
	J19	4-601868	BOCCOLA TASTATORE	BUSHING
	J20	2-01299	ROSETTA D8	WASHER D.8
	J21	2-00723	DADO ES N M8	NUT M8
	J22	4-601924	PROLUNGA TASTATORE	CONE
	J23	5-600433	ALZATALLONE COMPLETO	BEAD LIFTER DEVICE
	J24	4-601872/00	GUIDA ALZATALLONE	GUIDE
	J25	4-601858	ASTA ALZATALLONE	SHAFT
	J26	4-601885	PIASTRA BLOCCAGGIO ALZATALLONE	LOCKING PLATE
	J27	5-600338	CILINDRO BLOCCAGGIO	CYLINDER
	J28	2-00146	DADO ES. N M6	NUT M6
	J29	2-00310	VITE TCEI M6X20	SCREW M6X20
	J30	4-600538	MOLLA RICHIAMO STRNAGOLO	SPRING
	J31	2-72012	VITE STEI M12X25	SCREW M12X25
	J32	2-91640	DADO ES. B M12	NUT M12
	J33	2-00361	VITE TE M6X16	SCREW M6X16
	J34	4-601884-1	STAFFA ATTACCO CILINDRO	BRACKET
	J35	2-71525	DADO ES AUTOBLOC M10	SELF LOCKING NUT M10
	J36	5-600434	CILINDRO BLOCCAGGIO STALLONATORE	CYLINDER
	J37	043500300	FORCELLA M6	FORK M6
	J38	2-00909	VITE TCEI M6X35	SCREW M6X35
	J39	2-00358	VITE TE M5X30	SCREW TE M5X30
	J40	2-71524	DADO ES. AUTOBLOC M5	SELF LOCKING NUT M5
	J41	3309545	ANELLO AMMORTIZZATORE	SHOCK ADSORBER
	J42	2-00379	VITE TE M10X20	SCREW M10X20
	J43	047800500	ROSETTA D. 10	WASHER D.10
	J44	4-601918/00	COPERCHIO ALZATALLONI	COVER
	J45	3-03780	VALVOLA SCARICO RAPIDO	VALVE
	J46	043300100	SILENZIATORE 1/4	SYLENCER
	J47	3-00051	RACCPN LO G1/8 - T6	UNION LO G1/8 - T6
	J48	3-90656	RACCPN MANICOTTO G1/4	UNION G1/4
	J49	3-00221	RACCPN L G1/4 - T8	UNION L G1/4 - T8

RS= RICAMBI CONSIGLIATI / RECOMMENDED SPARES

AGGIORNAMENTI / UPDATE:

(§): fino alla matricola / up to serial number 120460370



TAV. H

SOLLEVATORE IPL / WHEEL LIFTER IPL

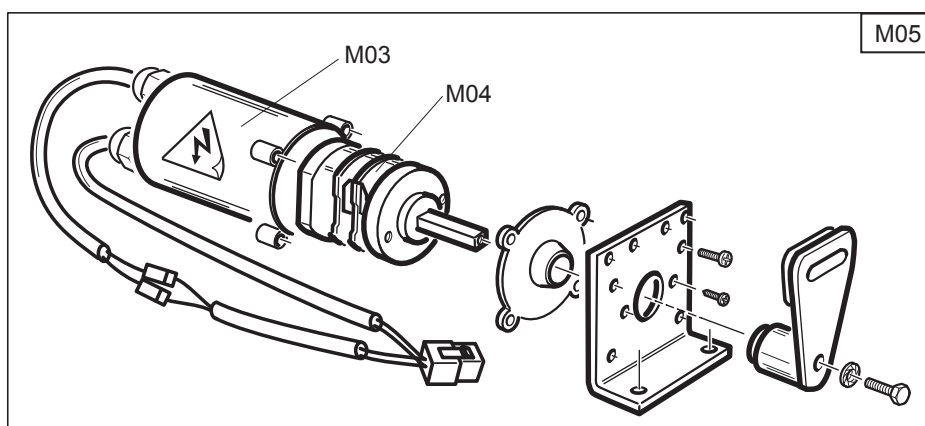
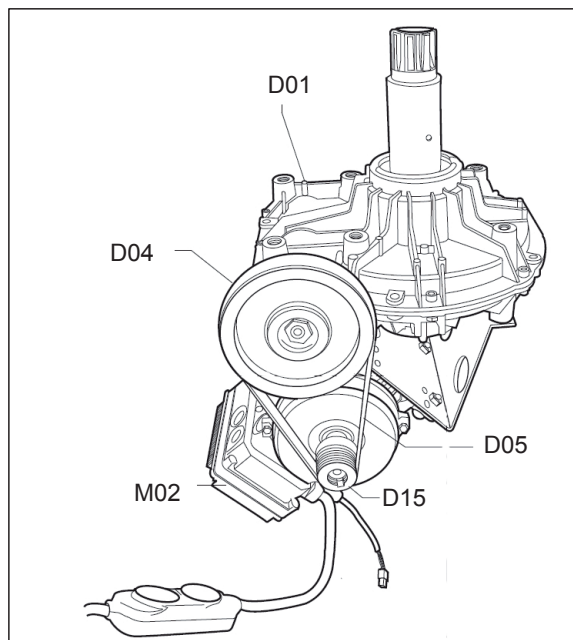
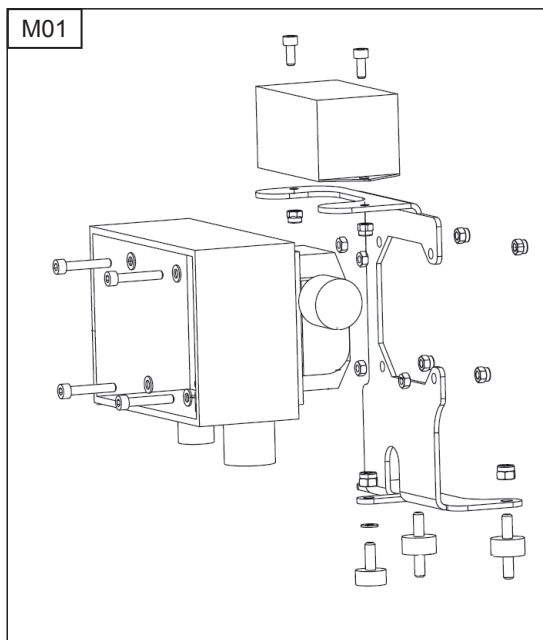
RS	REF	COD.	DESCRIZIONE	DESCRIPTION
	H01	4-600430/00	BIELLA DI STABILIZZAZIONE	STABILIZATION ROD
	H02	2-01130	ANELLO EL. D 16	SEEGER RING
	H03	4-600445	PERNO BIELLA STABILIZZAZIONE	STABILIZATION ROD PIN
	H04	4-600122	ADESIVO MAX.60KG	MAX 69 KG ADHESIVE
	H05	4-600428/00	PERNO CON BIELLA SOLLEVAMENTO	PIN WITH LIFTING ROD
	H06	047806100	RONDELLA DI RASAMENTO	WASHER
	H07	4-600452/00	PIASTRA PORTANTE	SUPPORTING PLATE
	H08	2-02155	VITE TBEI M 6X 16	SCREW M6X16
	H09	4-600431-1	CAMMA SOLLEVATORE	LIFTER CAM
	H10	4-600432	DISTANZIALE SOLLEVATORE	LIFTER SPACER
	H11	2-01299	ROSETTA 6593 ZI D 9,0X24X2	WASHER
	H12	2-00679	ROSETTA 6593 ZI D 6,6X18X1,5	WASHER
	H13	2-00728	VTCEI 4762 8.8 BR M 6X 14	SCREW M6X14
	H14	006507800	PERNO FULCRO CILINDRO RIBALTAB	TILTING CYLINDER SUPPORT
	H15	040300700	ANELLO PER PERNO	PIN RING
	H16	5-600104	CILINDRO IPL CON RACCORDI	IPL CYLINDER WITH UNIONS
RS	H30	5-600916	KIT GUARNIZIONI CILINDRO	COMPLETE CYLINDER GASKET KIT
	H31	2-03075	VTCEI B.9327 8.8 BR M 8X 40	SCREW M8X40
	H32	007902500	RULLO RULLIERA	ROLLER
	H33	4-600444/00	RULLIERA	UNIT ROLLER
	H34	000125900	ADES BANDA GIALLO/NERA L=330	ROLLER UNIT ADHESIVE
	H35	2-01979	DADO ES.B A.7474 6S ZI M 6	NUT M6
	H36	4-600888/00	APPOGGIO RUOTA PER RULLIERA	WHEEL SUPPORT FOR ROLLER
	H37	2-00309	RONDELLA D6	WASHER
	H38	2-01113	VITE TCEI M6 x 16	SCREW M6X16
	H40	4-600463	RULLO DISTANZIALE RULLIERA IPL	IPL SPACER ROLL
	H41	4-600140	PROTEZIONE CAVALLOTTO RULLIERA	STAPLE GUARD
	H42	4-600141	PERNO PROTEZIONE CAVALLOTTO	PROTECTION PIN
	H43	006507900	PERNO PIANO SOLLEVAMENTO	LIFTING PLATE PIN
	H44	2-00023	ANELLO EL. D 10	SEEGER RING
	H45	006402101/00	PEDALE DX	PEDAL R
	H46	4-604131	MOLLA RITORNO PEDALE	PEDAL SPRING
	H47	433675	RAC.REG.SILENZIATORE 1/8 SVE	UNION
	H49	5-600107	VALVOLA PEDALIERA IPL	IPL PEDAL VALVE
	H50	4-600408	BASAMENTO PEDALE STALLONATORE	BEAD BREAKER PEDAL BASE
	H51	2-00025	ANELLO EL. 7435 D 12	SEEGER RING
	H52	4-600415	PERNO 4 PEDALE	4 PEDAL PIN

RS= RICAMBI CONSIGLIATI / RECOMMENDED SPARES

AGGIORNAMENTI / UPDATE:

TAV. M

VARIANTE MOTOINVERTER / MOTOINVERTER VERSION
dalla matricola / from serial number 120460372
fino a matricola / up to serial number 141160449

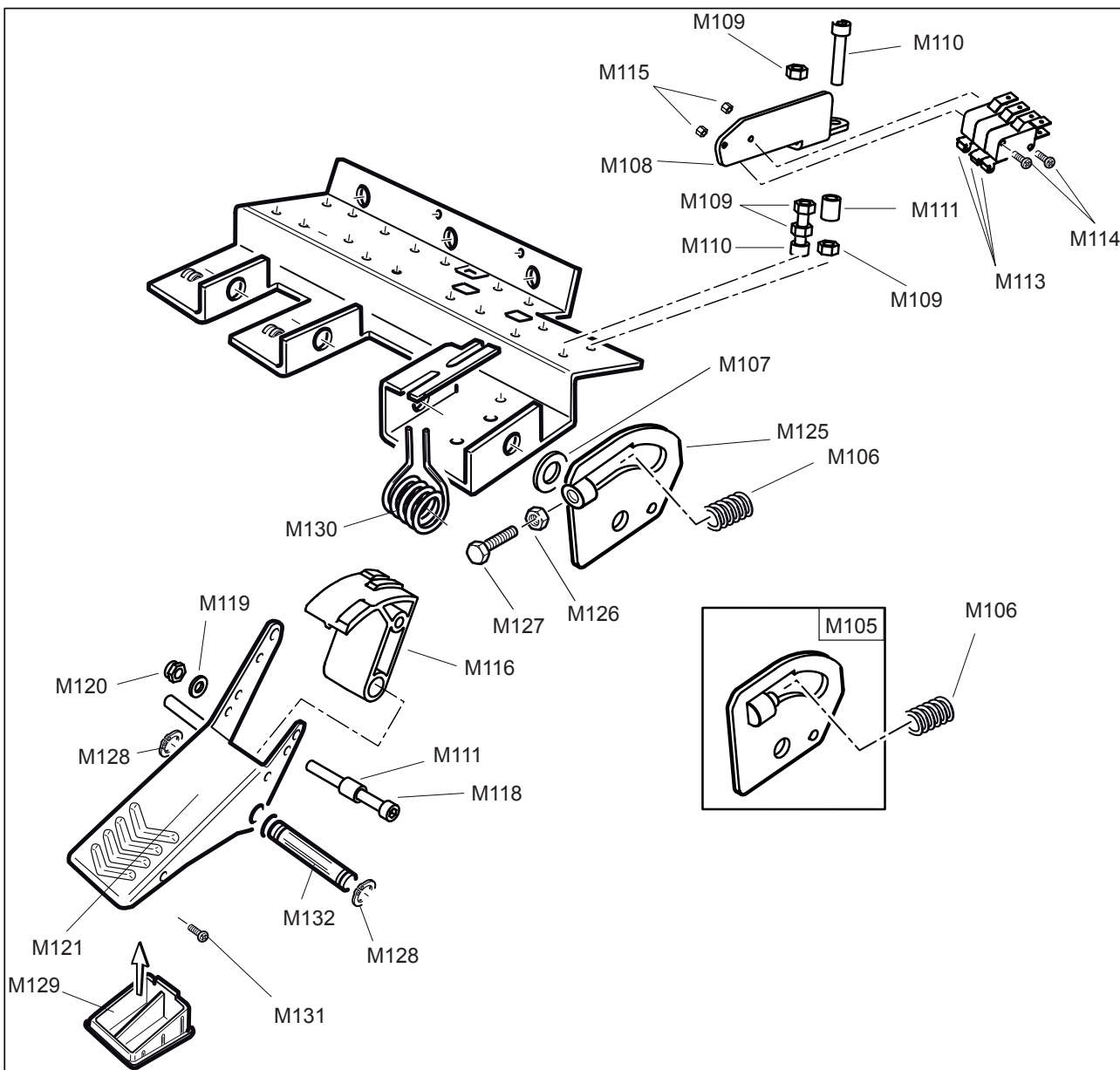
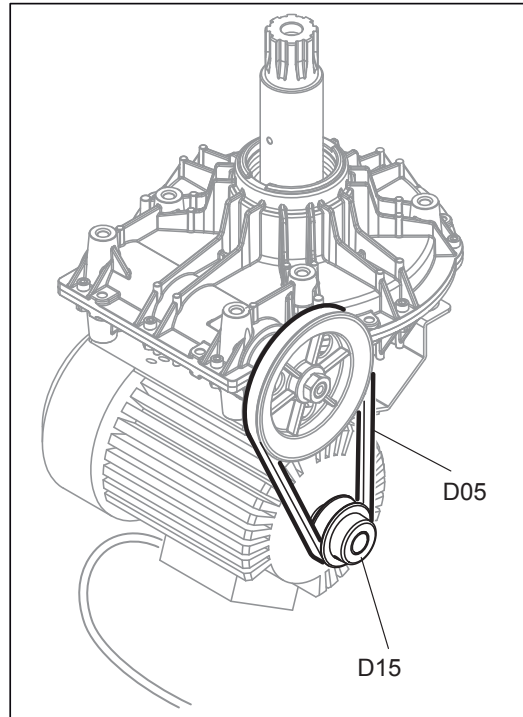
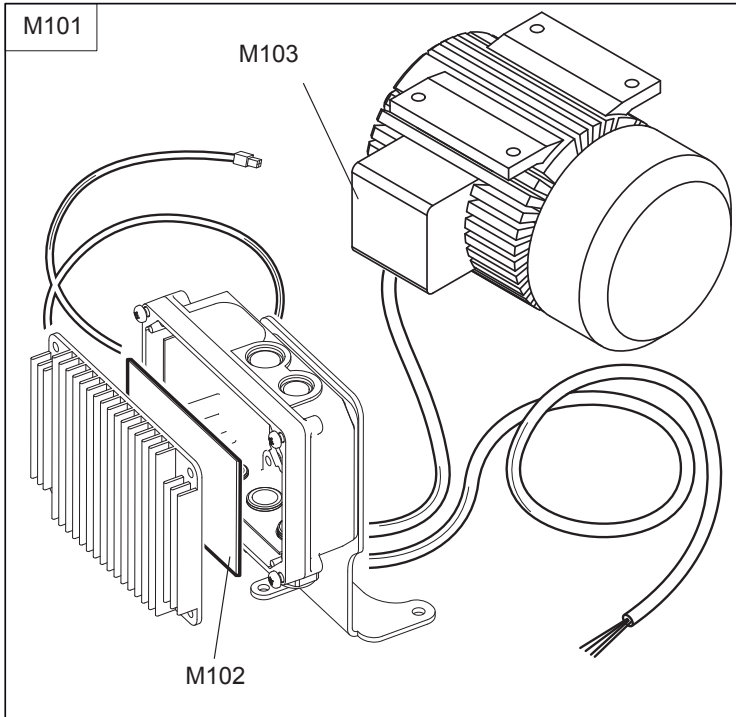


RS	REF	COD.	DESCRIZIONE	DESCRIPTION
	D01	103902111	RIDUTTORE	GEARBOX
	D04	314344C	PULEGGIA RIDUTTORE	PULLEY
	D05	3-90611	CINGHIA TRAPEZ AX23	AX23 BELT
	D15	007300100	PULEGGIA MOTORE 2 VEL	PULLEY FOR 2 SPEED MOTOR
	M01	5-600470	KIT INVERTER COMPLETO	COMPLETE INVERTER KIT
	M02	3-02593	KIT MOTORE A INVERTER	COMPLETE MOTOR
	M03	3311195	PROTEZIONE INVERTITORE	REVERSE SWITCH PROTECTION
	M04	3-90133	FRUTTO INVERTITORE 2 VELOCITA'	2-SPEED REVERSE SWITCH
	M04	5-600842	KIT FRUTTO INVERTITORE 2V	2 SPEED REVERSE KIT
	M05	5-600648A	INVERTITORE COMPLETO	COMPLETE REVERSE SWITCH
RS= RICAMBI CONSIGLIATI / RECOMMENDED SPARES				

AGGIORNAMENTI / UPDATE:

TAV. M1

VARIANTE MOTOINVERTER / MOTOINVERTER VERSION
dalla matricola / from serial number 141160450



TAV. M1

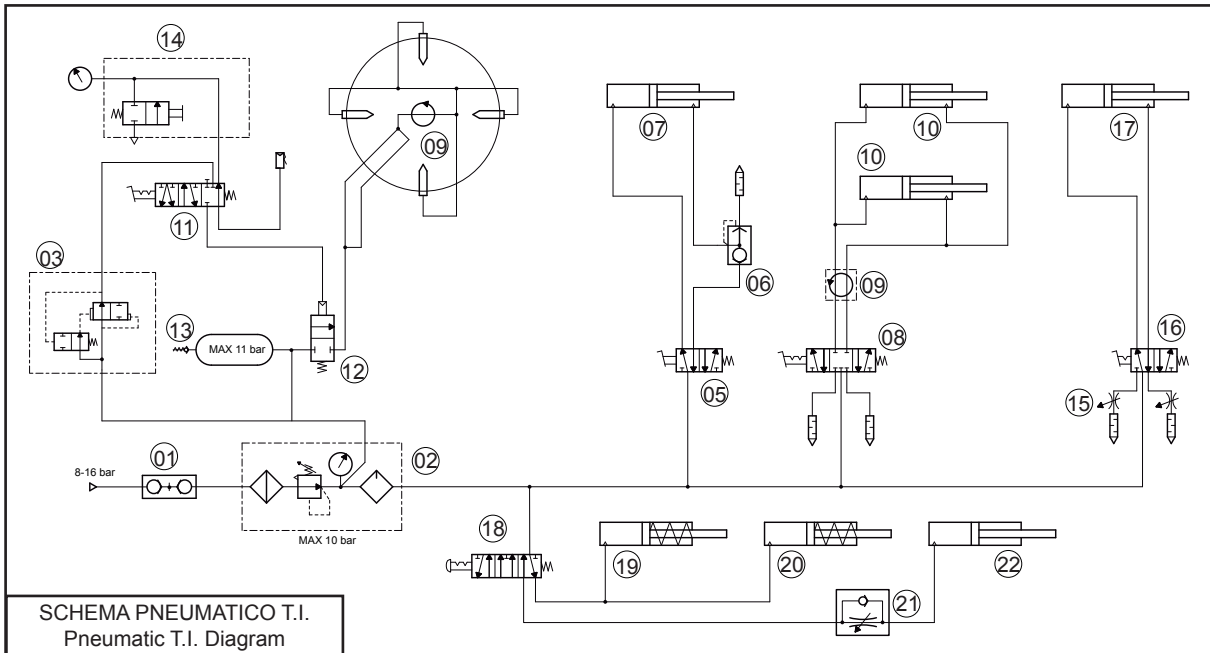
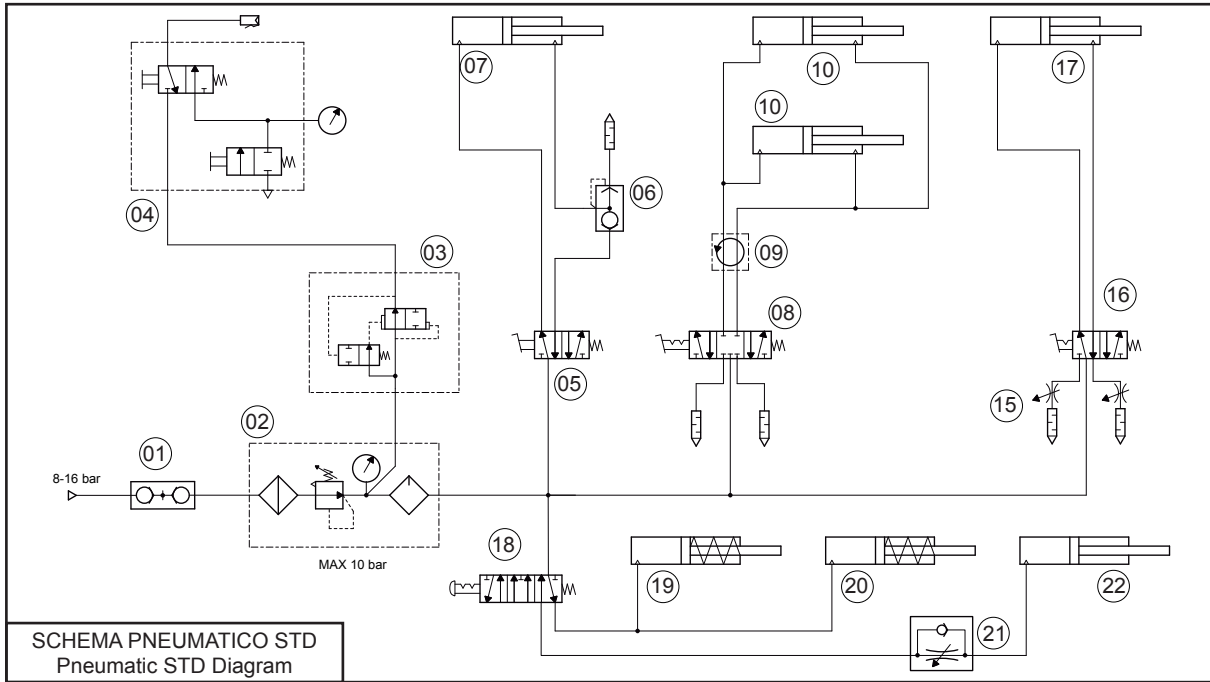
VARIANTE MOTOINVERTER / MOTOINVERTER VERSION
dalla matricola / from serial number 141160450

RS	REF	COD.	DESCRIZIONE	DESCRIPTION
	D105	3-03762	CINGHIA TRAPEZ AX24	AX24 BELT
	D115	4-600995	PULEGGIA MOTORE	PULLEY
	(#7) M101	3-90276	KIT INVERTER COMPLETO	COMPLETE INVERTER KIT
	M101A	3-03994	KIT INVERTER COMPLETO	COMPLETE INVERTER KIT
	M101B	3-03767	KIT MOTOINVERTER 200-240/1/50-60 ULCSA	COMPLETE MOTOINVERTER 200-240/1/50-60 ULCSA KIT
	(#7) M102	3-90726	KIT SCHEDE ELETTRONICA INVERTER	COMPLETE ELECTRONIC BOARD
	M102A	3-03452	KIT SCHEDE ELETTR. INVERTER	COMPLETE ELECTRONIC BOARD
	M102B	4-136671	KIT SCHEDE ELETTR. INVERTER ULCSA	COMPLETE ELECTRONIC BOARD ULCSA
	M103A	3-03998	MOTORE 200-240/1/50-60	MOTOR 200-240/1/50-60
	M103B	4-136672	MOTORE 200-240/1/50-60 - ULCSA	MOTOR 200-240/1/50-60 - ULCSA
	(#6) M105	5-600512	SUPPORTO MOLLA	SPRING SUPPORT
	M106	3-90296	MOLLA	SPRING
	M107	2-00214	RONDELLA D. 12	WASHER
	M108	4-601916	SUPPORTO MICROINTERRUTTORI	MICROSWITCH SUPPORT
	M109	2-00146	DADO ESAG. M6	NUT M6
	M110	2-00863	VITE TCEI M6X30	SCREW M6X30
	M111	4-601810	DISTANZIALE	SPACER
	M113	3-01451	MICROINTERRUTTORE	MICROSWITCH
	M114	2-94141	VITE TCEI M3X40	SCREW M3X40
	M115	2-94142	DADO ESAG. M3	NUT M3
	M116	4-401694	CAMMA DI COMANDO	COMMAND CAM
	M118	2-00317	VITE TCEI M6X60	SCREW M6X60
	M119	2-00211	RONDELLA D. 6	WASHER D.6
	M120	2-01979	DADO ESAG. AUTOBLOCC M6	SELF-LOCKING NUT M6
	M121	006402101/00	PEDALE	PEDAL
	M125	4-602253	SUPPORTO MOLLA	SPRING SUPPORT
	M126	2-00723	DADO ES. M8	NUT M8
	M127	2-00795	VITE TE M8x35	SCREW M8x35
	M128	2-00025	ANELLO EL. D12	SEEGER RING
	M129	3314621	TAPPO PEDALE INVERTITORE	PHASE REVERSE PEDAL CUP
	M130	4-602883	MOLLA PEDALE INVERTITORE 2 VEL	REVERSE PEDAL SPRING 2SPEED
	M131	2-02888	VITE ATBIC D4,2X 9,5	SCREW D4.2X9.5
	M132	4-600417	PERNO CORTO PEDALIERE 4P	4P PEDALS SHORT PIN

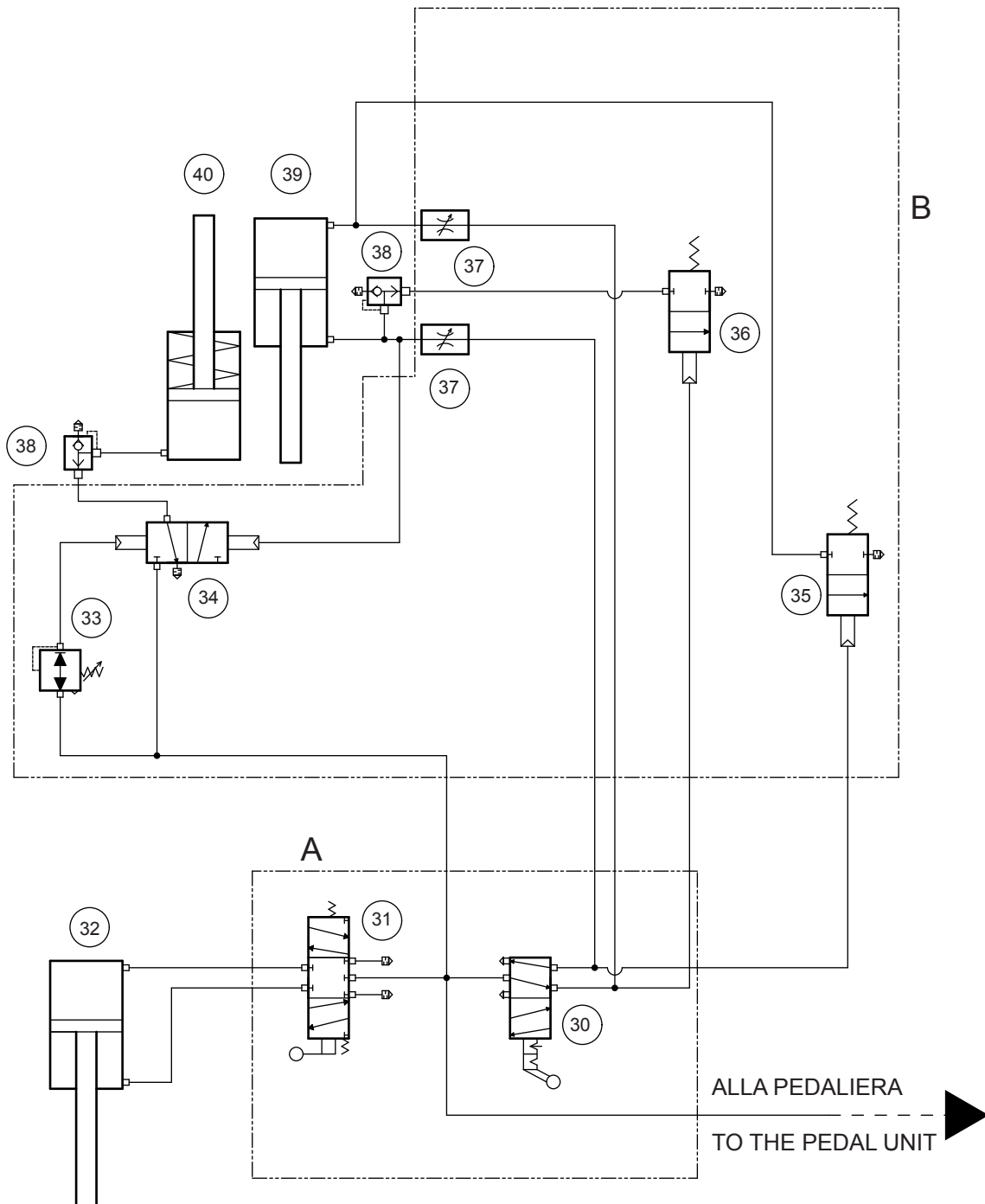
RS= RICAMBI CONSIGLIATI / RECOMMENDED SPARES
AGGIORNAMENTI / UPDATE:

(#6): fino alla matricola / up to serial number 101260127

(#7): fino alla matricola / up to serial number 161160000

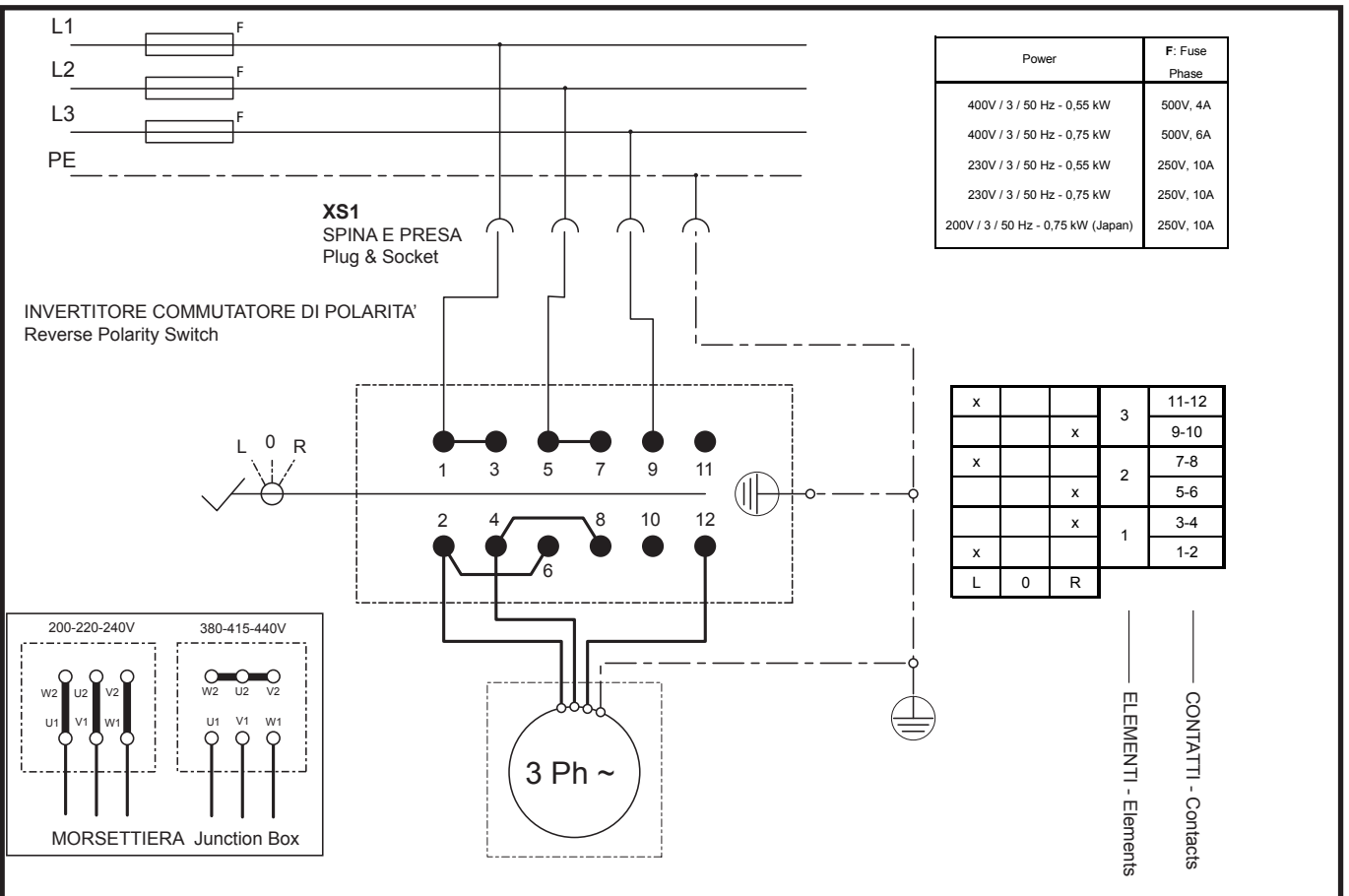
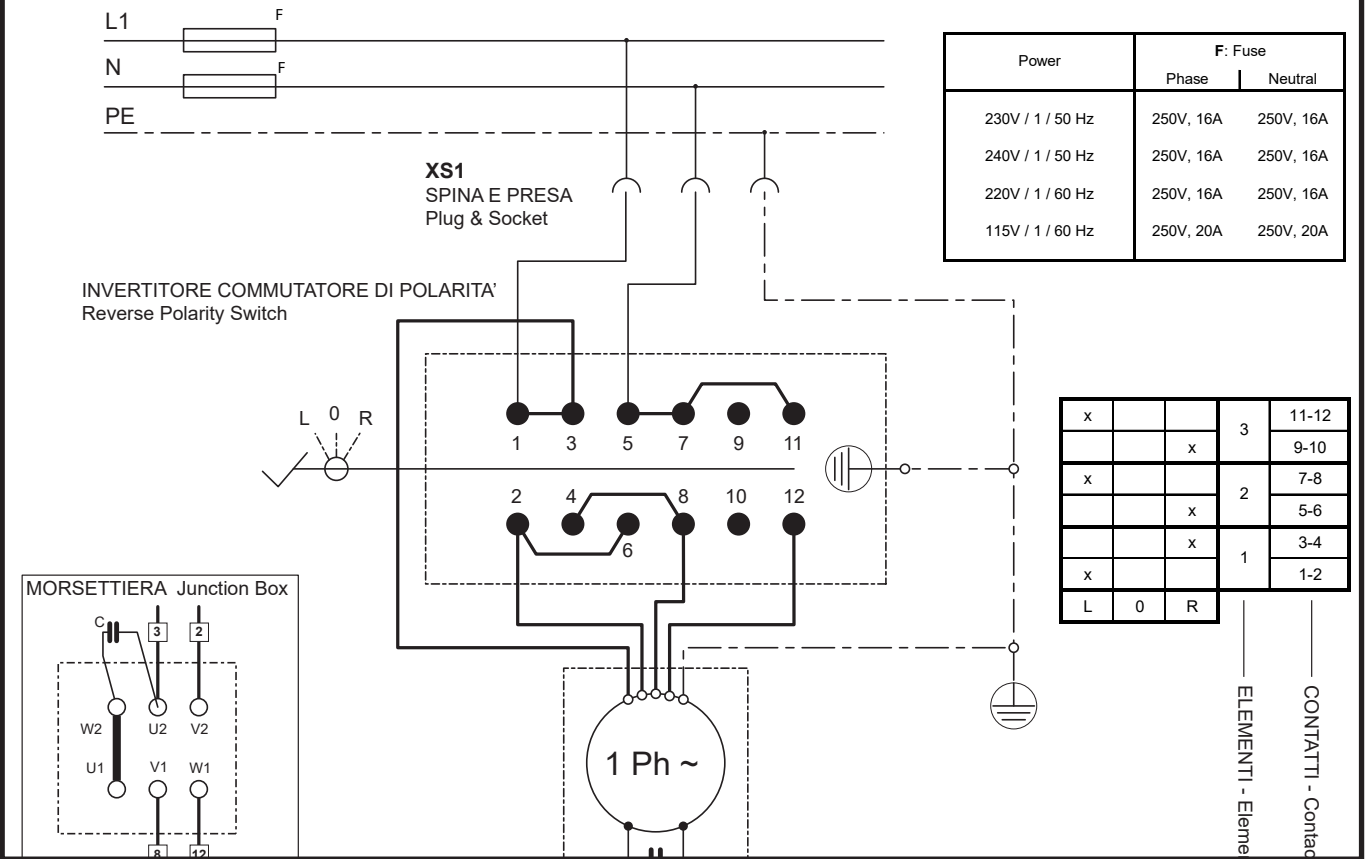


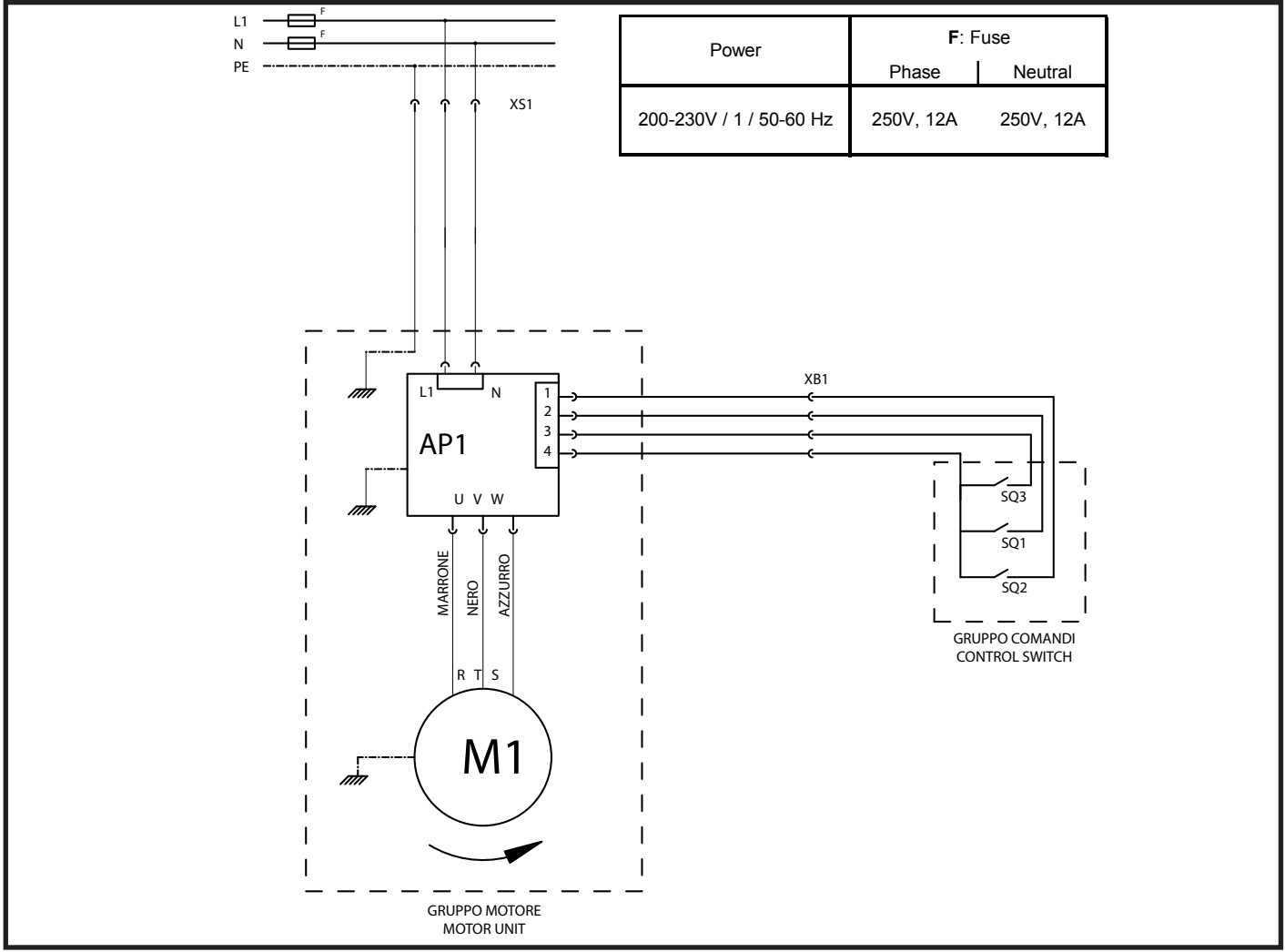
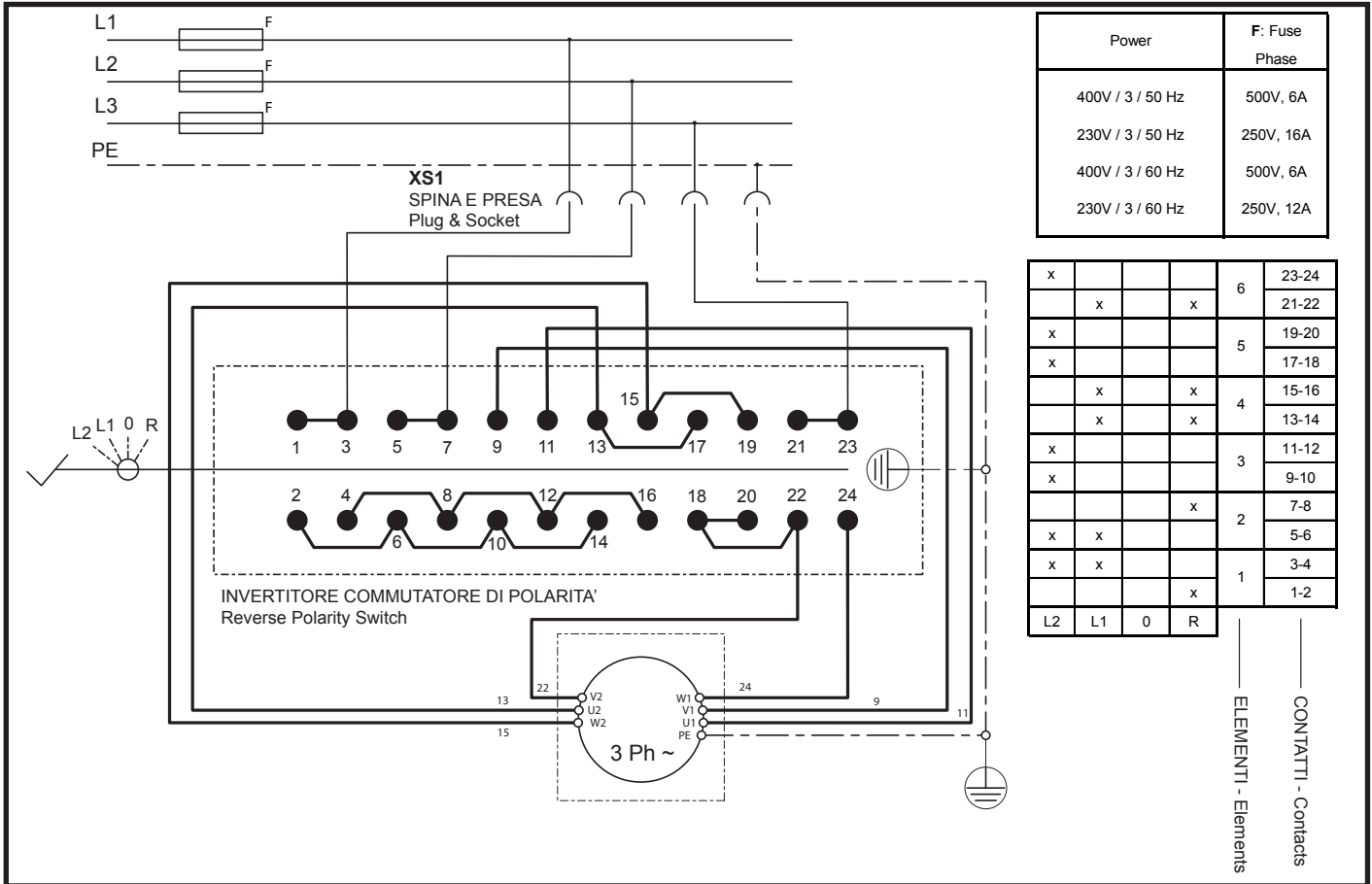
REF	DESCRIZIONE	DESCRIPTION	REF	DESCRIZIONE	DESCRIPTION
01	INNESTO RAPIDO MASCHIO	QUICK UNION	12	VALVOLA A MEMBRANA	VALVE
02	GRUPPO FRL	WATER SEPARATOR AND PRESSURE REGUL+LUBRIFICATOR	13	VALVOLA DI SICUREZZA	SAFETY VALVE
03	VALVOLA GONFIAGGIO RAPIDO	QUICK INFLATING VALVE	14	UNITA' DI GONFIAGGIO	INFLATE UNION BOX
04	PISTOLETTA DI GONFIAGGIO	INFLATING GUN AND GAUGE	15	SILENZIATORI REGOLABILI	REGULATE SYLENCER
05	VALVOLA STALLONATORE	BEAD BREAKING VALVE	16	VALVOLA PALO VERTICALE	VERTICAL POST VALVE
06	VALVOLA SCARICO RAPIDO	QUICK DISCHARGED VALVE	17	CILINDRO PALO VERTICALE	VERTICAL POST CYLINDER
07	CILINDRO STALLONATORE	BEAD BREAKING CYLINDER	18	PULSANTE BLOCCAGGIO BRACCIO	LOCKING HORIZONTAL ARM BUTTON
08	VALVOLA AUTOCENTRANTE	SELF-CENTERING CHUCK VALVE	19	CILINDRO BLOCCAGGIO BRACCIO	LOCKING HORIZONTAL ARM CYLINDER
09	RACCORDO GIREVOLE	ROTATING UNION	20	CILINDRO BLOCCAGGIO ASTA VERT	LOCKING VERTICAL SHAFT CYLINDER
10	CILINDRO AUTOCENTRANTE	SELF-CENTERING CHUCK CYLINDER	21	VALVOLA DI REGOLAZIONE	REGULATION VALVE
11	VALVOLA DI GONFIAGGIO	INFLATING VALVE	22	CILINDRO SOLLEVAMETNO ASTA	VERTICAL SHAFT LIFTING CYLINDER



REF	DESCRIZIONE	DESCRIPTION
30	SELETTORE	SELECTOR
31	VALVOLA DI CONTROLLO	CONTROL VALVE
32	CILINDRO AVANZAMENTO	TPH CYLINDER
33	REGOLATORE DI PRESSIONE	PRESSURE REGULATOR
34	VALVOLA	VALVE
35	VALVOLA AVANZAM. DISCO	FEEDING VALVE TPH DISC
36	VALVOLA RITORNO DISCO	RETURN VALVE TPH DISC
37	REGOLATORE DI FLUSSO	FLOW REGULATOR
38	VALVOLA SCARICO RAPIDO	QUICK VENTING VALVE
39	ALIMENTAZIONE CILINDRO	FEED PNEUMATIC CYLINDER
40	BLOCCAGGIO CILINDRO	LOCKING CYLINDER
A	CONSOLLE DI COMANDO TPH	TPH CONTROL PANEL
B	UNITA' DI CONTROLLO TPH	TPH CONTROL UNIT

AUTOMATIC TYRE CHANGER version





NOTE

