

LAVARUOTE WHEEL WASHING MACHINE LR400 / LR500

Version 1.7 - September 2016



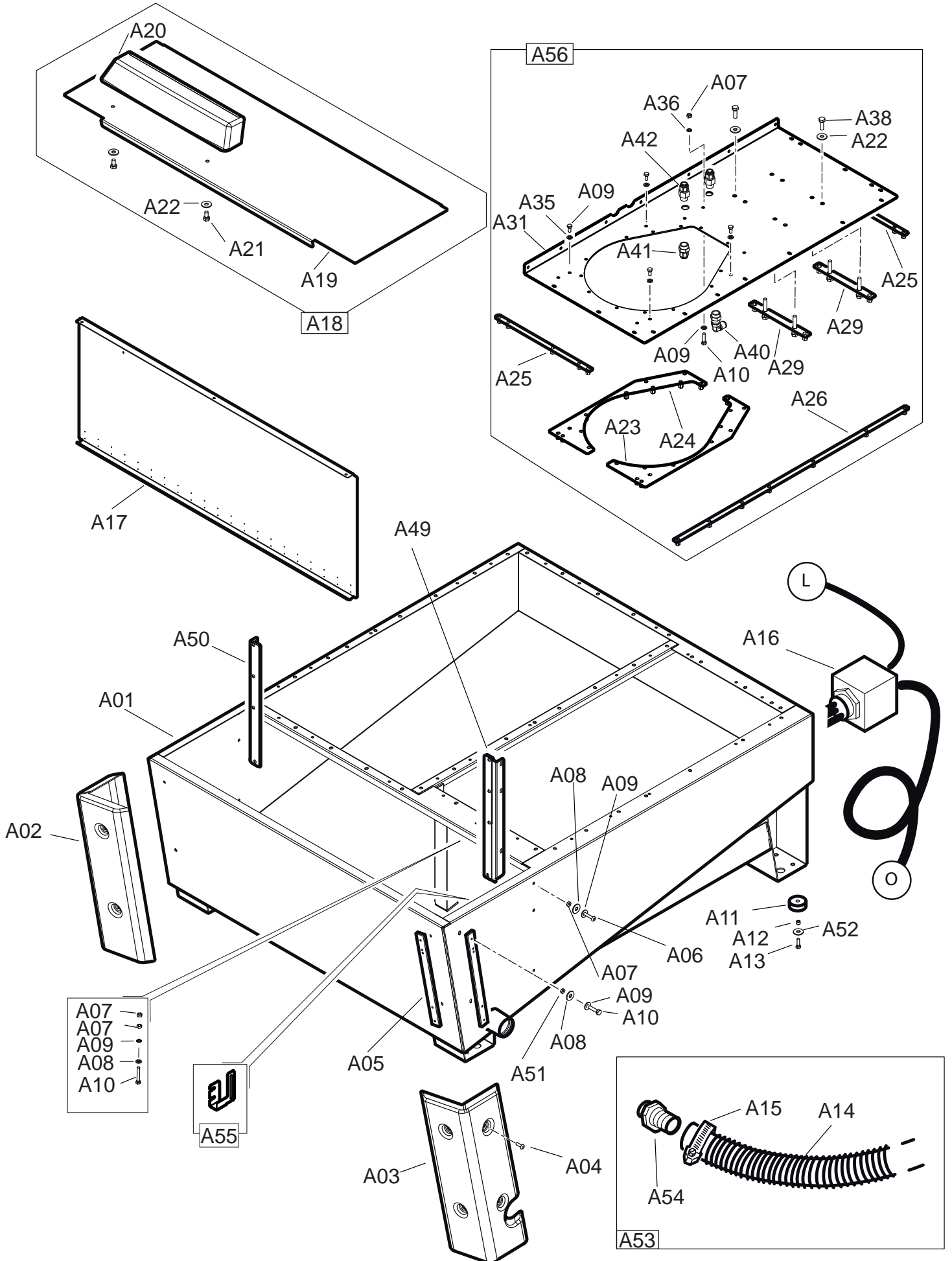
INDICE - INDEX

Tav. A	GR. VASCA	WASHING TANK
Tav. B	GR. ESTERNO	EXTERNAL PARTS
Tav. C	GR. LAVAGGIO	WASHING CHAMBER
Tav. C1	GR. MOTOPOMPA	PUMP UNIT
Tav. D	GR. FRONTALE	FRONTAL PARTS
Tav. E	GR. SCHEDA	CONTROL PANEL
Tav. F	GR. ELETTRICO	ELECTRICAL PARTS
Tav. G	DOTAZIONE	STAND. ACCESSORIES
Tav. H	SCHEMA PNEUM	PNEUMATIC DIAGRAM
Tav. I	SCHEMA ELETTR SENZA RISCALDATORE	ELECTRIC DIAGRAM W/O HEATING SYSTEM
Tav. L	SCHEMA ELETTR CON RISCALDATORE	ELECTRIC DIAGRAM WITH HEATING SYSTEM
Tav. M	RICAMBI CONSIGLIATI	RECOMMENDED SPARES



TAV A

GRUPPO VASCA / WASHING TANK





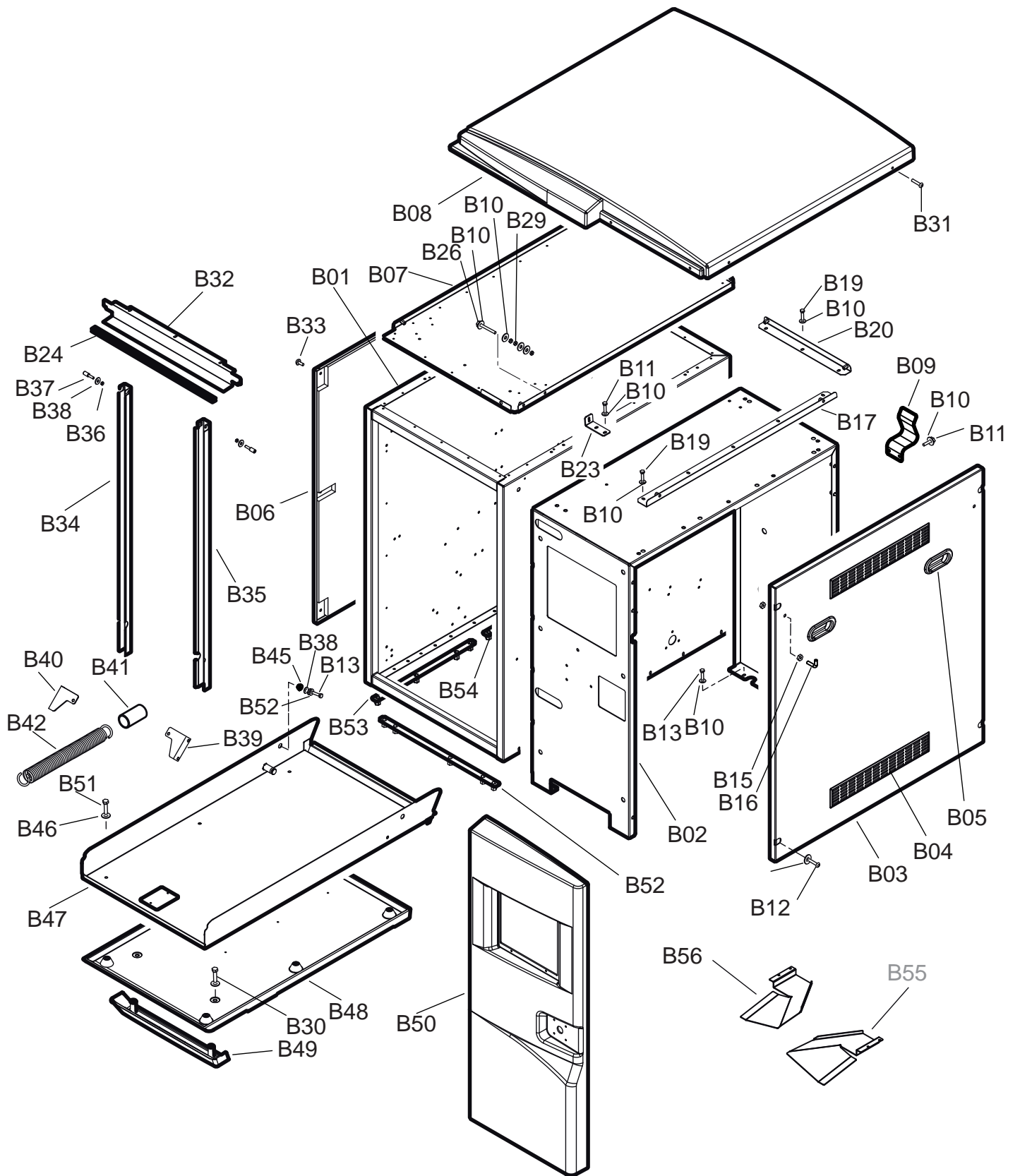
TAV A

GRUPPO VASCA / WASHING TANK

RS	REF	COD.	DESCRIZIONE	DESCRIPTION
	A01	5-600520A/62	VASCA LAVARUOTE	STEEL WASHING TANK
	A01	5-601014A/62	VASCA INOX LAVARUOTE	STAINLESS STEEL WASHING TANK
	A02	4-602436	CARTER PIEDE SX	PLASTIC FOOT LEFT COVER
	A03	4-602437	CARTER PIEDE DX	PLASTIC FOOT RIGHT COVER
	A04	049911200	VITE TBEI M6X10	SCREW TBEI M6X10
	A05	4-604176	PIATTO FISSAGGIO CARTER	PLATE
	A06	2-94180	VITE TBEI INOX M6X25	SCREW TBEI INOX M6X25
	A07	2-94165	DADO ES. INOX M6	NUT INOX M6
	A08	2-94169	ROSETTA INOX D. 6,6X18X1,5	WASHER INOX D. 6,6X18X1,5
	A09	3-90334	ROSETTA DI TENUTA RG6	WASHER RG6
	A10	2-94164	VITE TE INOX M6X25	SCREW TE INOX M6X25
	A11	046900600	PIEDE IN GOMMA	SHOCK-ABSOBER
	A12	042702000	DISTANZIALE	SPACER
	A13	2-00362	VITE TE M6x20	SCREW TE M6X20
RS	A14	4-602447	TUBO DI SCARICO	DRAIN PIPE
RS	A15	3-90399	COLLARE STRINGITUBO	HOSE CLAMP
RS	A16	3-90338	RESISTENZA RISCALDATORE VERS. 400V	HEATER RESISTANCE VERS. 400V
RS	A16	5-600907	RESISTENZA RISCALDATORE VERS. 230V	HEATER RESISTANCE VERS. 230V
	A17	5-600540	PARATIA DI CONTENIMENTO	SEGREGATION BULKHEAD
	#1 A17	5-600766	PARATIA DI CONTENIMENTO	SEGREGATION BULKHEAD
	A18	5-600541/62	COPERCHIO ISPEZIONE COMPLETO	COMPLETE INSPECTION LID
	A19	4-602315A/62	COPERCHIO ISPEZIONE	INSPECTION LID
RS	A20	4-602512	MANIGLIA COPERCHIO	HANDLE
	A21	2-94177	VITE TE INOX M8X16	SCREW TE INOX M6X16
	A22	2-94178	ROSETTA INOX D. 9X24X2	WASHER INOX D. 9X24X2
	A23	5-600963	FISSAGGIO DX POMPA	PUMP RIGHT FIXING
	A24	5-600962	FISSAGGIO SX. POMPA	PUMP LEFT FIXING
	#10 A25	5-600546	FISSAGGIO TRASVERSALE	FIXING
	#10 A26	5-600547	FISSAGGIO LUNGO	LONG FIXING
	A29	5-600548	FISSAGGIO MOTORE	MOTOR FIXING
	A31	4-602845A/62	SUPPORTO MOTORE E POMPA	MOTOR AND PUMP SUPPORT
	A35	2-94187	VITE TE INOX M6X20	SCREW TE INOX M6X20
	A36	2-71544	ROSETTA EL. D. 6	ELASTIC WASHER D. 6
	A38	2-94166	VITE TE INOX M8X25	SCREW TE INOX M8X25
	A40	5-600658	RACC. INFER. GOMITO	LOWER UNION L
	A41	5-600657	RACC. INFER. DIRITTO	LOWER UNION D
	A42	5-600656	RACC. SUPER. DIRITTO	UPPER UNION D
	A49	5-600522	GUIDA PARATIA DX	RIGHT BULKHEAD GUIDE
	A50	5-600521	GUIDA PARATIA SX	LEFT BULKHEAD GUIDE
	A51	2-94168	DADO ES .AUTOBL INOX M6	SELF-LOCKING NUT INOX M6
	A52	2-00679	RONDELLA D. 6	WASHER D. 6
	# A53	5-600755	TUBO DI SCARICO COMPLETO	COMPLETE DRAIN PIPE
	# A54	3-90458	RACCORDO TUBO DI SCARICO	DRAIN PIPE THREADED FITTING
	#1 A55	4-602911/16	INDICATORE LIVELLO ACQUA	WATER LEVEL INDICATOR
	A56	5-600545	SUPPORTO MOTORE+POMPA	MOTOR+PUMP SUPPORT
	#6 A56	5-600961	SUPPORTO MOTORE+POMPA (vers. 400-3-50 Hz)	MOTOR+PUMP SUPPORT (vers. 400-3-50 Hz)
	#7 A56	5-600961	SUPPORTO MOTORE+POMPA (vers. 230-3-60 Hz)	MOTOR+PUMP SUPPORT (vers. 230-3-60 Hz)

RS= RICAMBI CONSIGLIATI / RECOMMENDED SPARES**AGGIORNAMENTI / UPDATE:**

#: dalla matricola / from serial number 120960079
 #1: dalla matricola / from serial number 130660132
 #6: dalla matricola / from serial number 130760197
 #7: dalla matricola / from serial number 130660308
 #10: fino alla matricola / up to serial number 160261182





TAV B

GRUPPO ESTERNO / EXTERNAL PARTS

RS	REF	COD.	DESCRIZIONE	DESCRIPTION
	B01	4-602286	CARCASSA CAMERA LAVAGGIO	WASHING CHAMBER
	#2 B01	4-602607A	CARCASSA CAMERA LAVAGGIO	WASHING CHAMBER
	#3 B01	4-603161	CARCASSA CAMERA LAVAGGIO	WASHING CHAMBER
	B02	5-600553/62	CARCASSA DI COPERTURA	RIGHT BODY
	#2 B02	5-600723/62	CARCASSA DI COPERTURA	RIGHT BODY
	B03	5-600554/62	PANNELLO DX COMPLETO	RIGHT PANEL
	#2 B03	5-600722/62	PANNELLO DX COMPLETO	RIGHT PANEL
	B04	3-90352	GRIGLIA	GRID
	B05	3-90353	MANIGLIA	SERVICE COVER HANDLE
	B06	5-600552/62	PANNELLO SX COMPLETO	LEFT PANEL
	#2 B06	5-600721/62	PANNELLO SX COMPLETO	LEFT PANEL
	B07	5-650019	COPERCHIO SUPERIORE	UPPER SIDE COVER
	B08	4-602434	CARTER SUPERIORE	UPPER COVER
	B09	4-602448/62	STAFFA AGGANCIAMENTO TUBO DI SCARICO	DRAIN PIPE BRACKET
	B10	2-00679	ROSETTA D. 6,6X18X1,5	WASHER D. 6,6X18X1,5
	B11	2-00362	VITE TE M6X20	SCREW TE M6X20
	B12	2-00310	VITE TCEI M6X20	SCREW TCEI M6X20
	B13	2-94164	VITE TE INOX M6X25	SCREW TE INOX M6X25
	B15	2-00723	DADO ES. M8	NUT M8
	B16	336292	GANCIO	HOOK
	B17	5-600635	STAFFA LONGITUD. FISS. CARTER	BRACKET
	B19	2-00361	VITE TE M6X16	SCREW TE M6X16
	B20	5-600634	STAFFA TRASVERS. FISS. CARTER	BRACKET
	B23	4-602602	STAFFA DI REGISTRAZIONE	BRACKET
	B24	4-602605	PARABORDI LABIRINTO CENTRALE	GASKET
	B26	2-00368	VITE TE M6X50	SCREW TE M6X50
	B29	2-00146	DADO ES. M6	NUT M6
	B30	2-00374	VITE TE M8X25	SCREW TE INOX M8X25
	B31	2-94182	VITE TBEI M6X16	SCREW TBEI M6X16
	B32	4-602301	LABIRINTO SUPERIORE	UPPER LABYRINTH
	B33	2-94181	VITE TBEI M6X14	SCREW TBEI M6X14
	B34	4-602615A	LABIRINTO FLOTTANTE SX	LEFT LABYRINTH
	#1 B34	5-601011	LABIRINTO FLOTTANTE SX	LEFT LABYRINTH
	B35	4-602299	LABIRINTO FLOTTANTE DX	RIGHT LABYRINTH
	#1 B35	4-602618A	LABIRINTO FLOTTANTE DX	RIGHT LABYRINTH
	B36	2-94168	DADO ESAG. AUTOBL. INOX M6	SELF-LOCKING NUT INOX M6
	B37	4-602347	PERNO FULCRO LABIRINTO	LABYRINTH PIN
	B38	2-94169	ROSETTA D. 6,6x18x1,5	WASHER D. 6,6x18x1,5
	B39	5-600526	STAFFA DX ATTACCO MOLLA	BRACKET
	B40	5-600525	STAFFA SX ATTACCO MOLLA	BRACKET
	B41	4-602690	PROTEZIONE MOLLA	PROTECTION
RS	B42	4-602376	MOLLA CHIUSURA COPERCHIO	WASHING CHAMBER DOOR SPRING
	B45	4-602326	ECCENTRICO FULCRO	ECCENTRIC PIN
	B46	2-94178	ROSETTA D. 9X24X2	WASHER D. 9X24X2
	B47	4-602290	COPERCHIO FRONTALE	FRONTAL SIDE
	#2 B47	4-602611	COPERCHIO FRONTALE	FRONTAL SIDE
	B48	4-602435	CARTER COPERCHIO FRONTALE	FRONTAL COVER
RS	B49	4-602512	MANIGLIA COPERCHIO	HANDLE

RS= RICAMBI CONSIGLIATI / RECOMMENDED SPARES**AGGIORNAMENTI / UPDATE:**

#1: fino alla matricola / up to serial number 130660132

#2: dalla matricola / from serial number 111160060

#3: dalla matricola / from serial number 130960394

**TAV B****GRUPPO ESTERNO / EXTERNAL PARTS**

RS	REF	COD.	DESCRIZIONE	DESCRIPTION
	B50	5-600719	CARTER FRONTALE	FRONTAL COVER
	#2 B50	5-600720	CARTER FRONTALE	FRONTAL COVER
	B51	2-94177	VITE TE INOX M8X16	SCREW TE INOX M8X16
	B52	#10 5-600542	FISSAGGIO TRASVERSALE	FIXING
	B53	#10 5-600543	FISSAGGIO LONGH. ANTER.	FIXING
	B54	#10 5-600544	FISSAGGIO LONGH. POSTER.	FIXING
	#1 B55	4-602697A	CONVOGLIATORE DESTRO	RIGHT CONVEYOR
	B56	4-602698B	CONVOGLIATORE SINISTRO	LEFT CONVEYOR
	B57	2-94174	MOLLA A TAZZA	ELASTIC WASHER

RS= RICAMBI CONSIGLIATI / RECOMMENDED SPARES**AGGIORNAMENTI / UPDATE:**

#1: fino alla matricola / up to serial number 130660132

#2: dalla matricola / from serial number 111160060

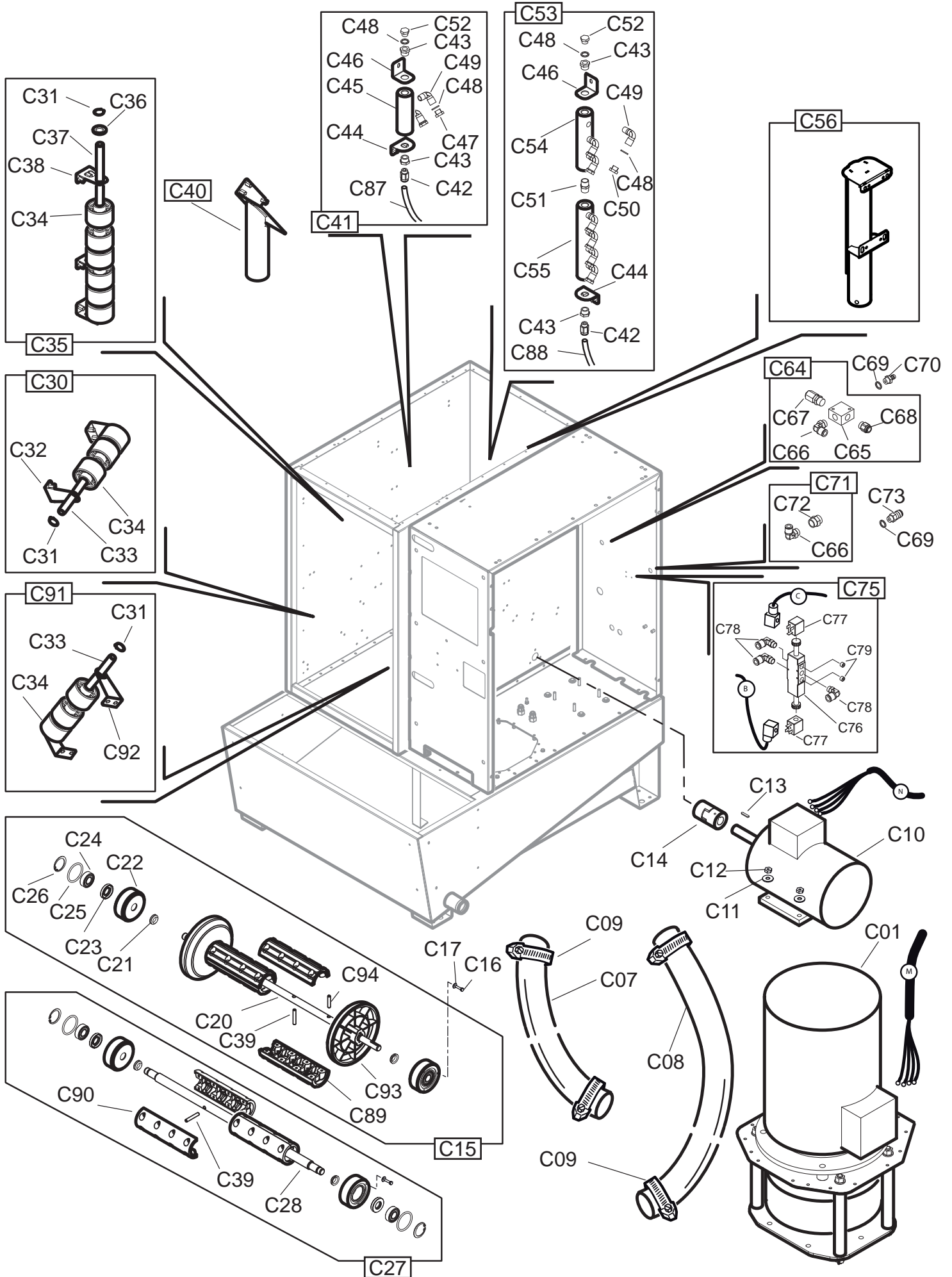
#3: dalla matricola / from serial number 130960394

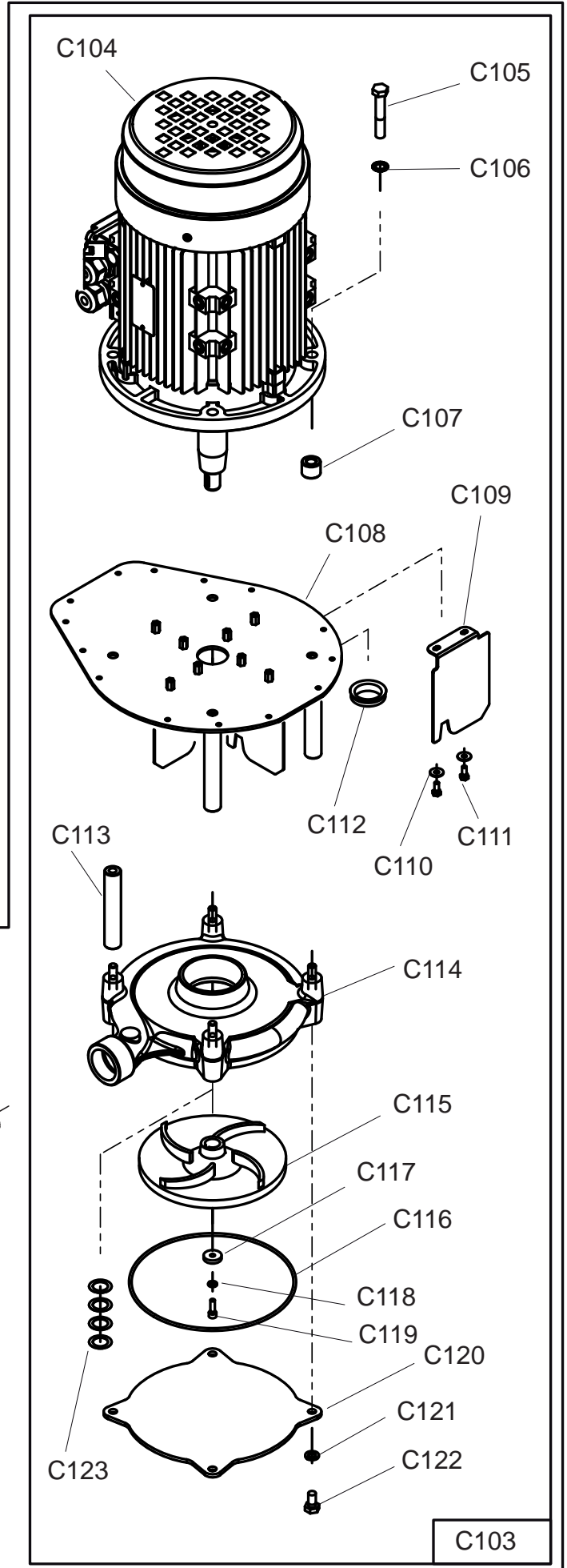
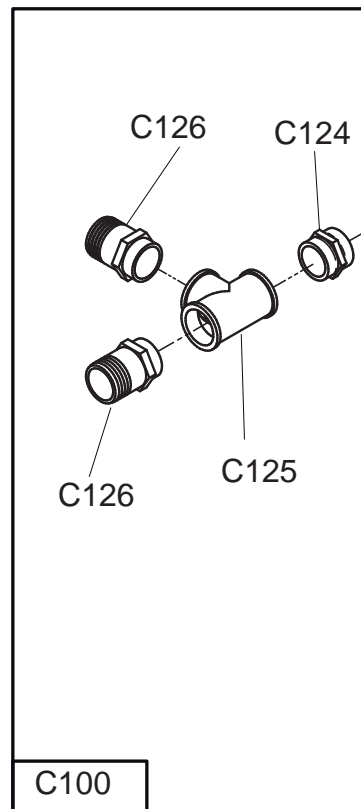
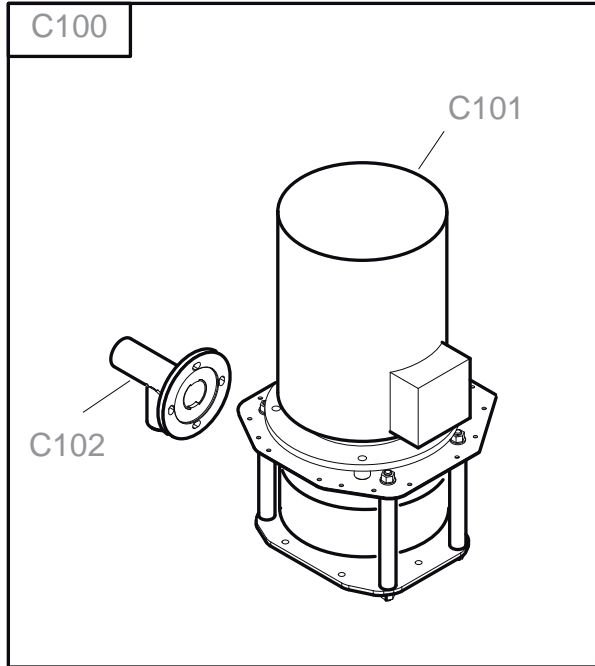
#10: fino alla matricola / up to serial number 160261182

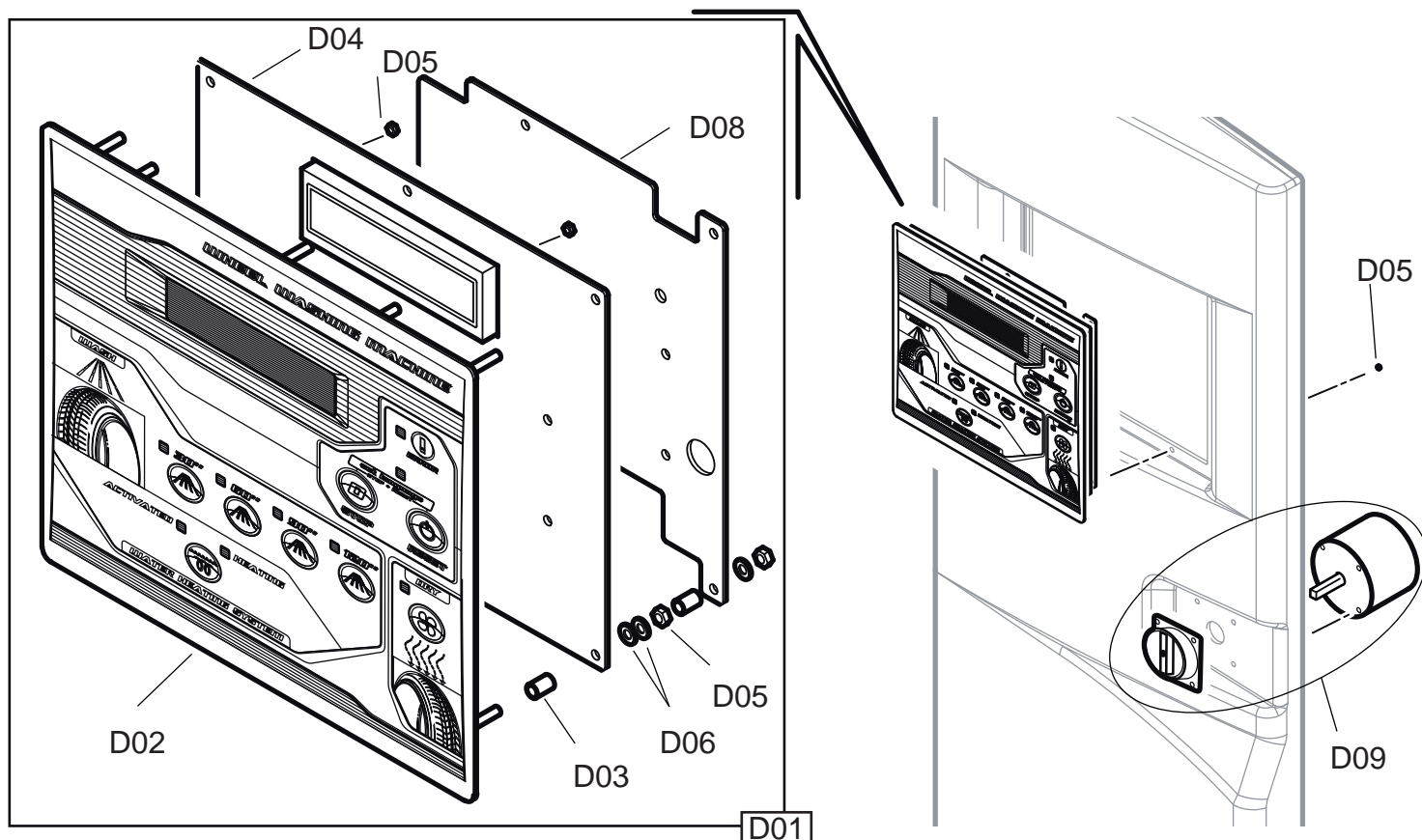


TAV C

GRUPPO DI LAVAGGIO / WASHING CHAMBER



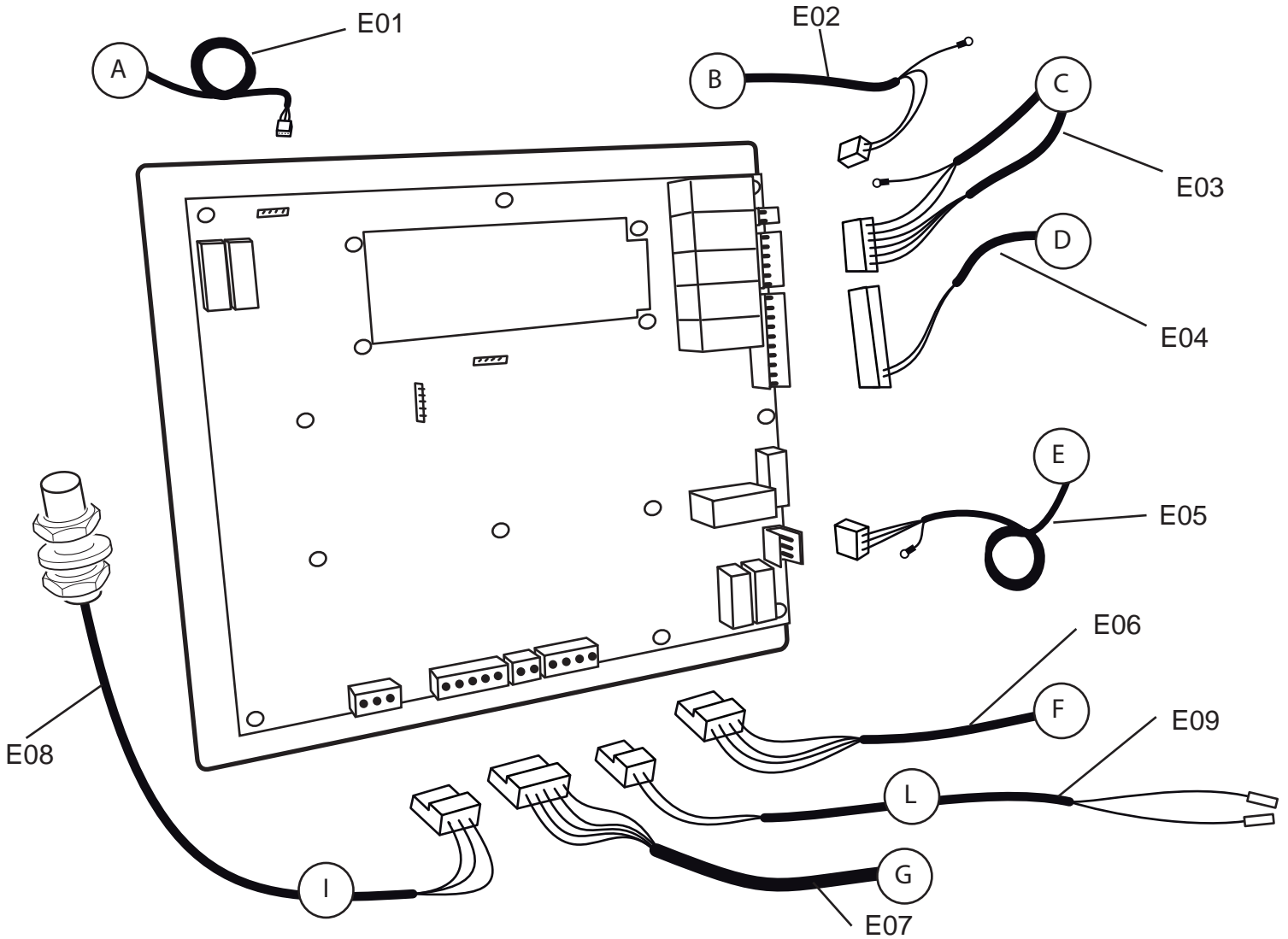




RS	REF	COD.	DESCRIZIONE	DESCRIPTION
RS	D01	5-600601C	PANNELLO COMANDO COMPLETO	COMPLETE CONTROL PANEL
	D02	4-602372	PANNELLO DISPLAY	DISPLAY PANEL
	D03	3-90406	DISTANZIALE	SPACER
	D04	4-602429B	SCHEDA ELETTRONICA	MOTHERBOARD
	#10 D04	4-603164	SCHEDA ELETTRONICA	MOTHERBOARD
	D05	2-00143	DADO ES. M4	NUT M4
	D06	2-02884	RONDELLA D. 4	WASHER D. 4
	D08	4-602430	SUPPORTO SCHERMO SCHEDA ELETTRONICA	MOTHERBOARD SUPPORT
	#10 D08	4-602430A	SUPPORTO SCHERMO SCHEDA ELETTRONICA	MOTHERBOARD SUPPORT
	D09	3-90324	INTERRUTT. GEN. - VERS. 400-3-50 5,5kW	SWITCH - VERS. 400-3-50 5,5kW
	D09	3-90441	INTERRUTT. GEN. - VERS. 230-3-60 5,5kW	SWITCH - VERS. 230-3-60 5,5kW

RS= RICAMBI CONSIGLIATI / RECOMMENDED SPARES

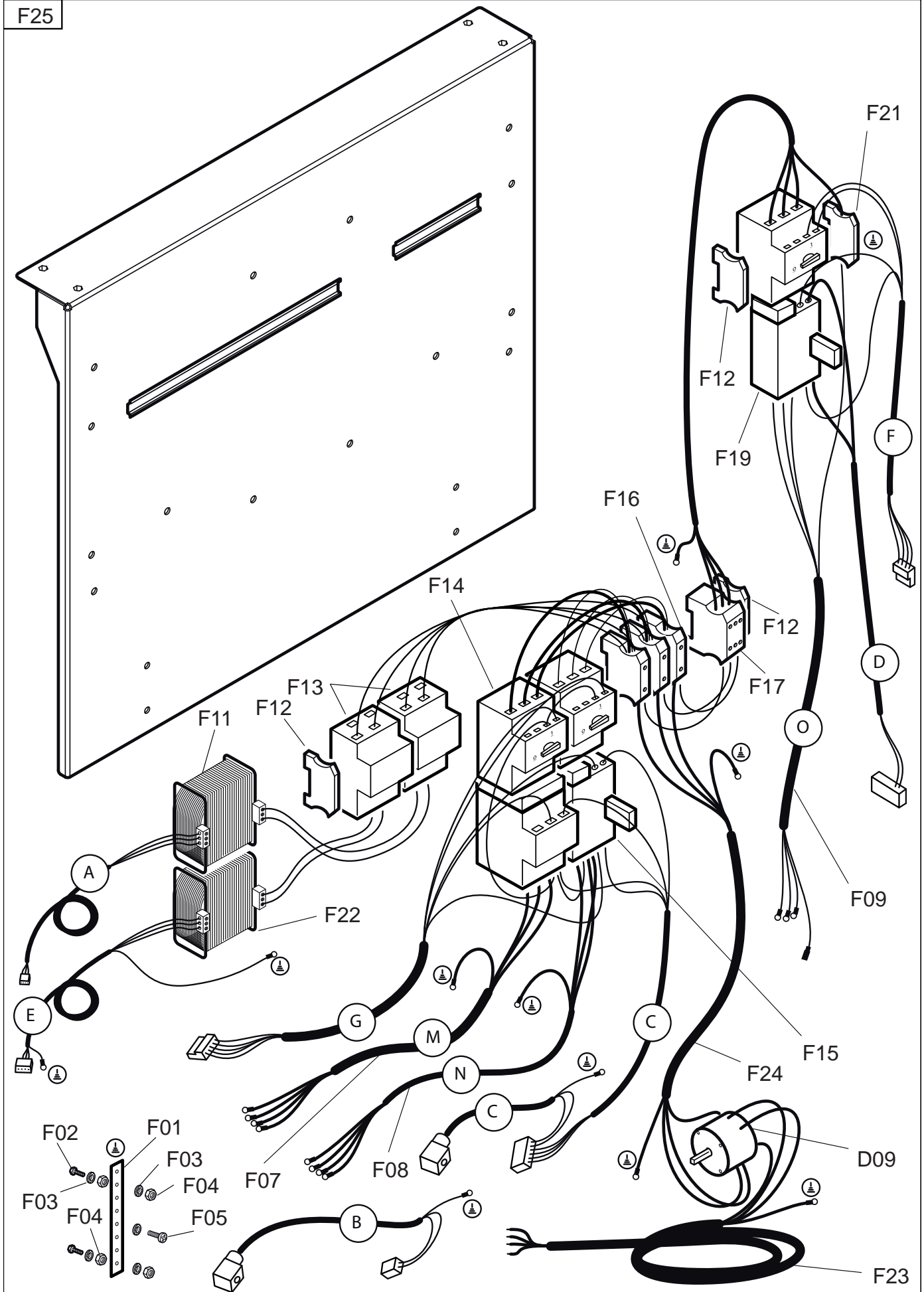
AGGIORNAMENTI / UPDATE:
 #10: dalla matricola / from serial number 140960299



RS	REF	COD.	DESCRIZIONE	DESCRIPTION
	E01	5-600569	CAVO ALIM. SK. ELETTR. - VERS. 400-3-50 5,5kW	MOTHERBOARD CABLE - VERS. 400-3-50 5,5kW
	E01	5-600747	CAVO ALIM. SK. ELETTR. - VERS. 230-3-60 5,5kW	MOTHERBOARD CABLE - VERS. 230-3-60 5,5kW
	E02	5-600598	CAVO ELETTROVALV. ESTERNA	EXTERNAL ELECTROVALVE CABLE
	E03	5-600572	CAVO COM. PRINCIP. - VERS. 400-3-50 5,5kW	MAIN CABLE - VERS. 400-3-50 5,5kW
	E03	5-600741	CAVO COM. PRINCIP. - VERS. 230-3-60 5,5kW	MAIN CABLE - VERS. 230-3-60 5,5kW
	E04	5-600592	CAVO COM. RISCALD. - VERS. 400-3-50 5,5kW	HEATER CABLE - VERS. 400-3-50 5,5kW
	E04	5-600744	CAVO COM. RISCALD. - VERS. 230-3-60 5,5kW	HEATER CABLE - VERS. 230-3-60 5,5kW
	E05	5-600568	CAVO ALIMENT. RELAIS - VERS. 400-3-50 5,5kW	RELAIS CABLE - VERS. 400-3-50 5,5kW
	E05	5-600739	CAVO ALIMENT. RELAIS - VERS. 230-3-60 5,5kW	RELAIS CABLE - VERS. 230-3-60 5,5kW
	E06	5-600591	CAVO COM. AUX. RISC. - VERS. 400-3-50 5,5kW	HEATER AUXILIARY CABLE - VERS. 400-3-50 5,5kW
	E06	5-600746	CAVO COM. AUX. RISC. - VERS. 230-3-60 5,5kW	HEATER AUXILIARY CABLE - VERS. 230-3-60 5,5kW
	E07	5-600570	CAVO AUX. COM. POMPA/TRASC - VERS. 400-3-50	PUMP CABLE - VERS. 400-3-50 5,5kW
	E07	5-600740	CAVO AUX. COM. POMPA/TRASC - VERS. 230-3-60	PUMP CABLE - VERS. 230-3-60 5,5kW
RS	E08	5-600622	SENSORE DI PROSSIMITA'	PROXIMITY SENSOR
	E09	5-600595	CAVO TERMOCOPPIA	THERMOCOUPLE CABLE

RS= RICAMBI CONSIGLIATI / RECOMMENDED SPARES
AGGIORNAMENTI / UPDATE:

F25





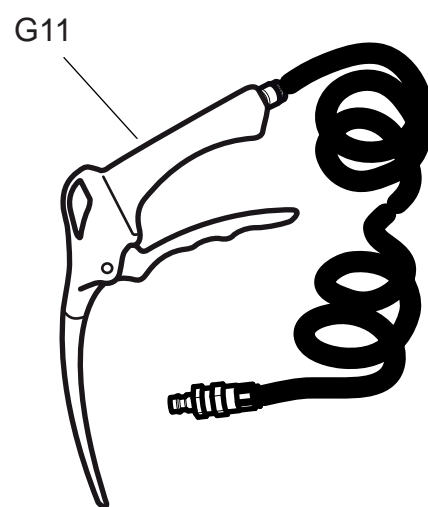
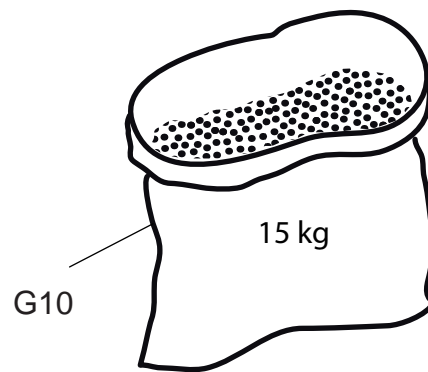
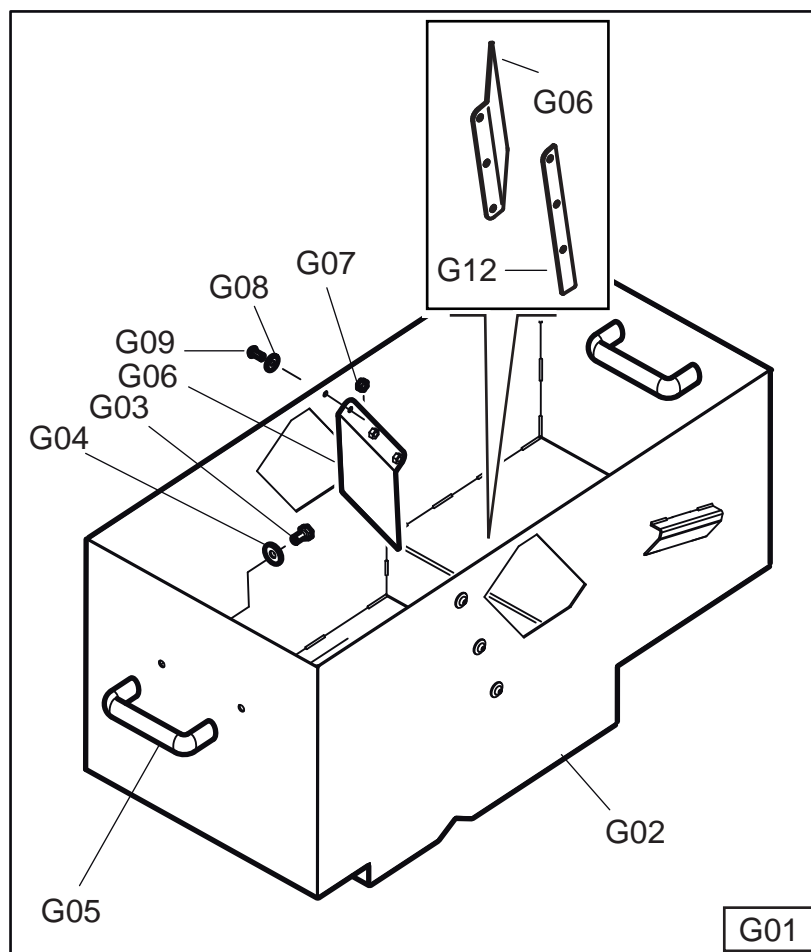
TAV F

GRUPPO ELETTRICO / ELECTRICAL PARTS

RS	REF	COD.	DESCRIZIONE	DESCRIPTION
	D09	3-90324	INTERRUTT. GEN. - VERS. 400-3-50 5,5kW	SWITCH - VERS. 400-3-50 5,5kW
	D09	3-90441	INTERRUTT. GEN. - VERS. 230-3-60 5,5kW	SWITCH - VERS. 230-3-60 5,5kW
	F01	3-90424	BARRA EQUIPOTENZIALE	PLATE
	F02	2-02031	VITE TE M6X30	SCREW TE M6X30
	F03	2-02018	RONDELLA EL. D6	ELASTIC WASHER D. 6
	F04	2-00146	DADO ES. M6	NUT M6
	F05	2-02452	VITE TBIC M6X16	SCREW TBIC M6X16
	F07	5-600567	CAVO ELETTRIC. INT. - VERS. 400-3-50 5,5kW	INT. ELECTROV CABLE - VERS. 400-3-50 5,5kW
	F07	5-600737	CAVO ELETTRIC. INT. - VERS. 230-3-60 5,5kW	INT. ELECTROV CABLE - VERS. 230-3-60 5,5kW
	F08	5-600588	CAVO ALIM. MOT TRASC. - VERS. 400-3-50 5,5kW	MOTOR CABLE - VERS. 400-3-50 5,5kW
	F08	5-600738	CAVO ALIM. MOT TRASC. - VERS. 230-3-60 5,5kW	MOTOR CABLE - VERS. 230-3-60 5,5kW
	F09	5-600590	CAVO ALIMENT. RISCALD- VERS. 400-3-50 5,5kW	HEATER CABLE - VERS. 400-3-50 5,5kW
	F09	5-600742	CAVO ALIMENT. RISCALD- VERS. 230-3-60 5,5kW	HEATER CABLE - VERS. 230-3-60 5,5kW
	F11	3-90328	TRASFORMATORE N°1	TRANSFORMER N°1
	F12	3-90421	ARRESTO PER ROTAIA DIN	HOLDER
	F13	3-90420	PORTAFUSIBILE DOPPIO	FUSE CASE
RS	F14	5-600559	AVVIAT. ELETTRIC. - VERS. 400-3-50 5,5kW	PUMP STARTER - VERS. 400-3-50 5,5kW
RS	F14	5-600732	AVVIAT. ELETTRIC. - VERS. 230-3-60 5,5kW	PUMP STARTER - VERS. 230-3-60 5,5kW
RS	F15	5-600562	AVVIATORE TRASCIN. - VERS. 400-3-50 5,5kW	DRIVE STARTER - VERS. 400-3-50 5,5kW
RS	F15	5-600733	AVVIATORE TRASCIN. - VERS. 230-3-60 5,5kW	DRIVE STARTER - VERS. 230-3-60 5,5kW
	F16	3-90422	MORSETTO SINGOLO	SINGLE TERMINAL
	F17	3-90423	MORSETTO DOPPIO	DOUBLE TERMINAL
RS	F19	5-600586A	AVVIATORE RISCALD. - VERS. 400-3-50 5,5kW	HEATER STARTER - VERS. 400-3-50 5,5kW
RS	F19	5-600734A	AVVIATORE RISCALD. - VERS. 230-3-60 5,5kW	HEATER STARTER - VERS. 230-3-60 5,5kW
	F21	3-90357	MORSETTO DI TERRA	GROUND TERMINAL
	F22	3-90329	TRASFORMATORE N°2	TRANSFORMER N°2
	F23	5-600565	CAVO ALIM. LAVARUOTE - VERS. 400-3-50 5,5kW	WHEEL WASHER FEEDING CABLE - VERS. 400-3-50
	F23	5-600735	CAVO ALIM. LAVARUOTE - VERS. 230-3-60 5,5kW	WHEEL WASHER FEEDING CABLE - VERS. 230-3-60
	F24	5-600566	CAVO IMP. EL. PRINCIP. - VERS. 400-3-50 5,5kW	MIAN WIRING CABLE - VERS. 400-3-50 5,5kW
	F24	5-600736	CAVO IMP. EL. PRINCIP. - VERS. 230-3-60 5,5kW	MIAN WIRING CABLE - VERS. 230-3-60 5,5kW
	F25	5-600639A	IMPIANTO EL. COMPLETO - VERS. 400-3-50 5,5kW	COMPLETE WIRING ASSEMBLY - VERS. 400-3-50
	F25	5-600649	IMPIANTO EL. COMPLETO - VERS. 230-3-60 5,5kW	COMPLETE WIRING ASSEMBLY - VERS. 230-3-60

RS= RICAMBI CONSIGLIATI / RECOMMENDED SPARES

AGGIORNAMENTI / UPDATE:

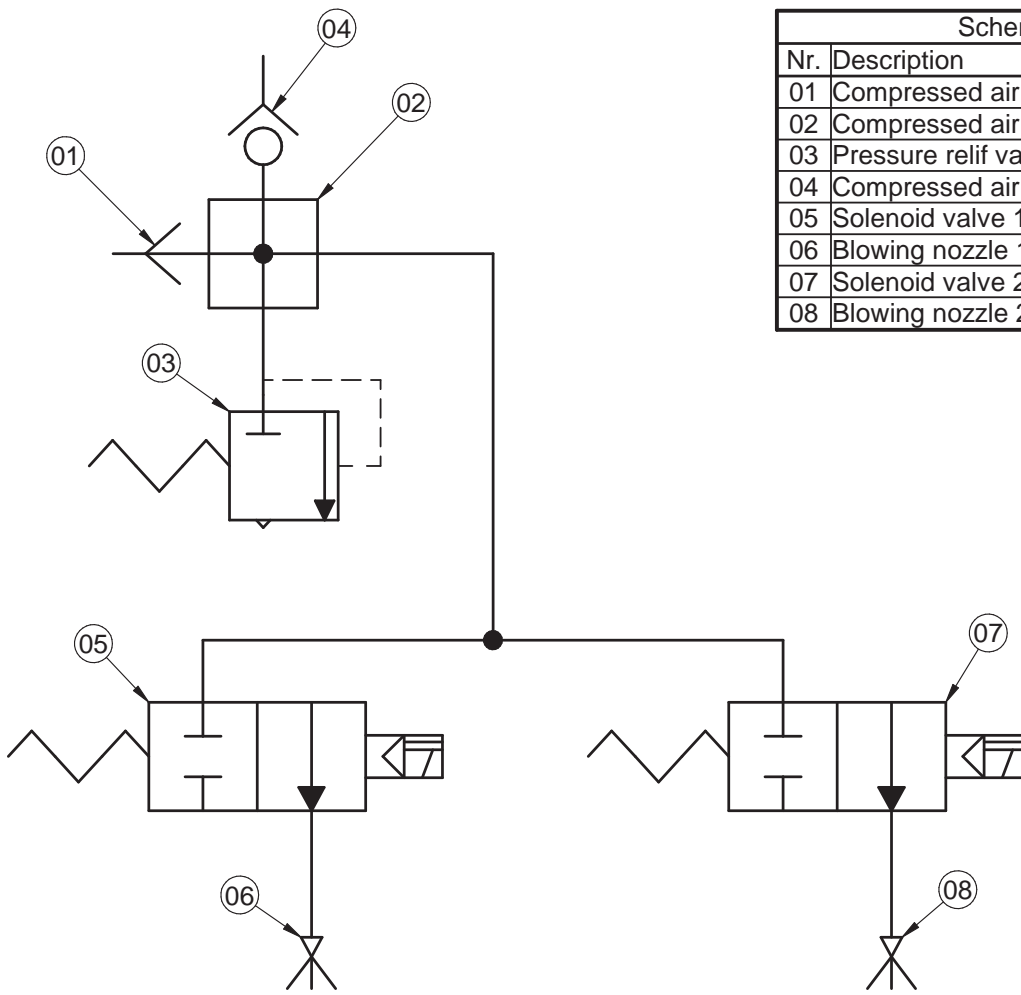


RS	REF	COD.	DESCRIZIONE	DESCRIPTION
	G01	5-600624	CESTELLO COMPLETO	COMPLETE COLLECTION BASKET
	#1 G01	5-600987	CESTELLO COMPLETO	COMPLETE COLLECTION BASKET
	G02	4-602531A	CESTELLO	COLLECTION BASKET
	#9 G02	4-602722B	CESTELLO	COLLECTION BASKET
	G03	2-94177	VITE TE INOX M8X16	SCREW TE INOX M8X16
	G04	2-94178	ROSETTA INOX D. 9X24X2	WASHER INOX D. 9X24X2
	G05	3-90354	MANIGLIA	HANDLE
	G06	4-602558	DEFLETTORE CESTELLO	BASKET DEFLECTOR
	#9 G06	4-602723	DEFLETTORE CESTELLO	BASKET DEFLECTOR
	G07	2-94165	DADO ES. INOX M6	NUT INOX M6
	G08	2-94169	ROSETTA INOX D. 6,6X18X1,5	WASHER INOX D. 6,6X18X1,5
	G09	2-94181	VITE TBEI INOX M6X14	SCREW TBEI INOX M6X14
	G10	5-600638C	DOTAZIONE GRANULI 25kg	GRANULES 25 kg
	#1 G10	5-600989C	DOTAZIONE GRANULI 15 kg	GRANULES 15 kg
	G11	3-90402	PISTOLA DI SOFFIAGGIO	BLOWING GUN
	#1 G12	4-603066	INDICATORE LIVELLO GRANULI - 15 kg	GRANULES LEVEL INDICATOR - 15 kg

RS= RICAMBI CONSIGLIATI / RECOMMENDED SPARES
AGGIORNAMENTI / UPDATE:

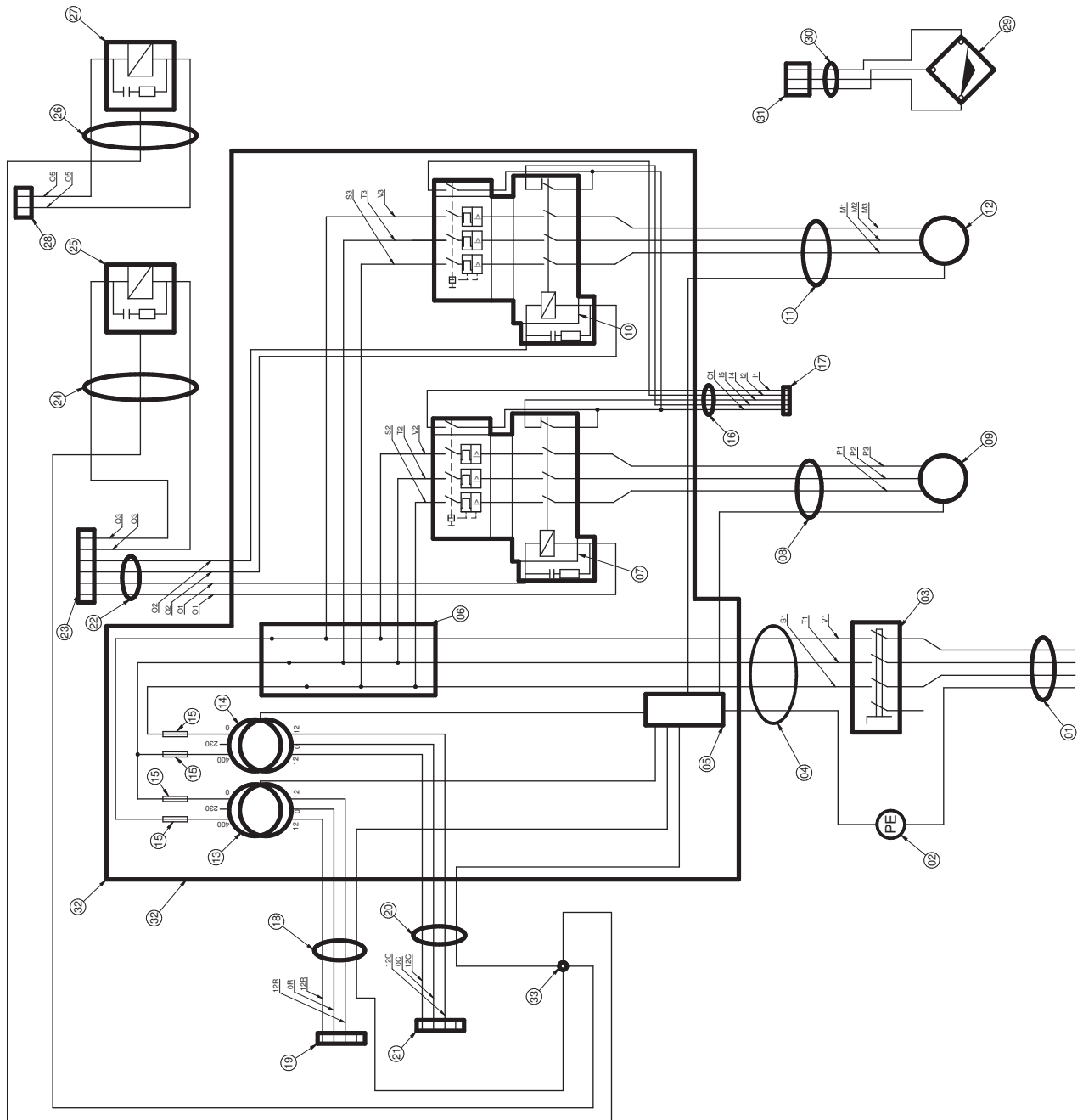
#1: dalla matricola / from serial number 130660132

#9: dalla matricola / from serial number 120360325

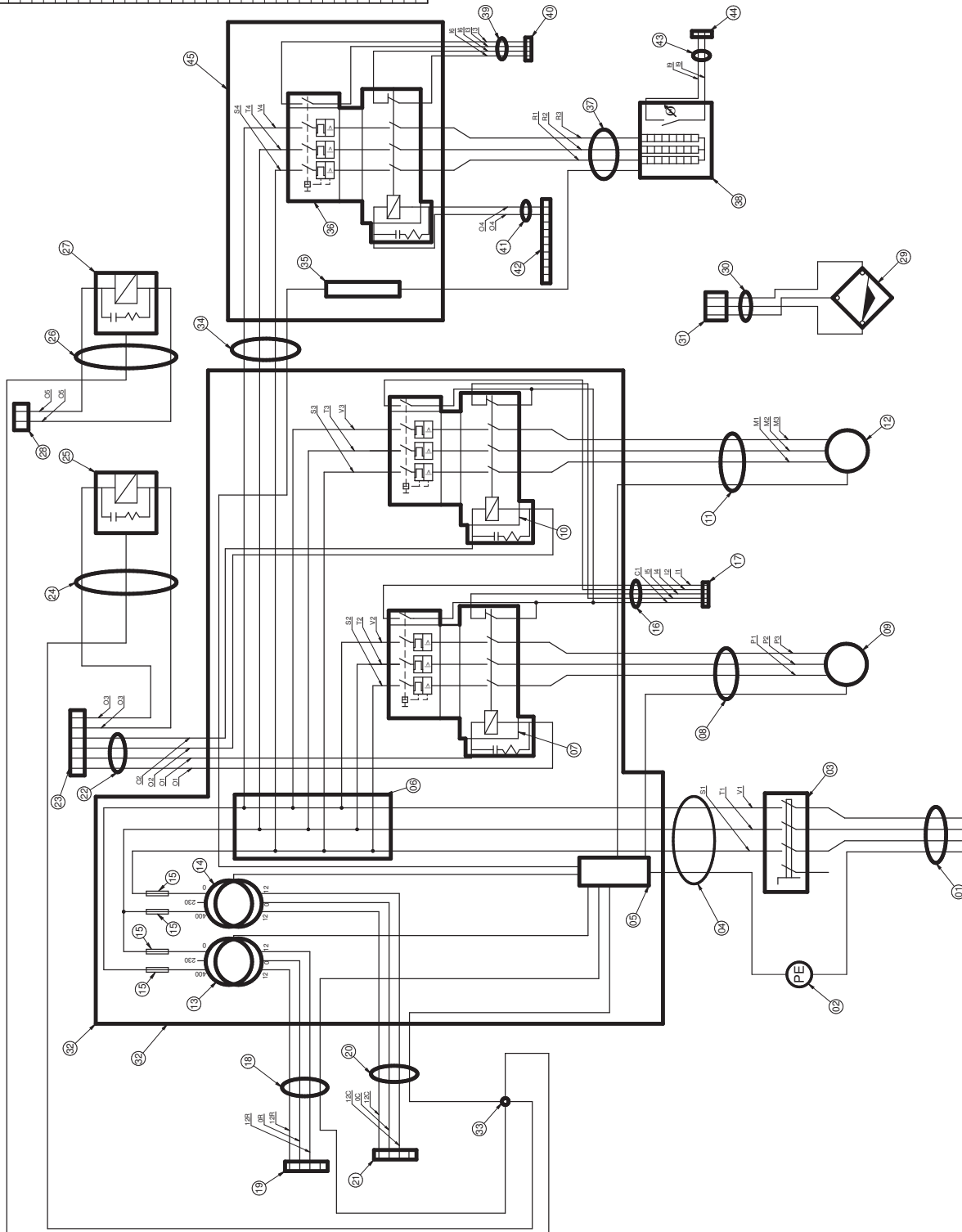


Scheme description	
Nr.	Description
01	Compressed air inlet
02	Compressed air distributor
03	Pressure relief valve
04	Compressed air outlet for auxiliary implement
05	Solenoid valve 1
06	Blowing nozzle 1
07	Solenoid valve 2
08	Blowing nozzle 2

Nr.	Description	Scheme description
01	Mains cable	
02	Main grounding terminal	
03	Mains switch	
04	Main powerbox power supply cable	
05	Main powerbox grounding terminal	
06	Power distribution box	
07	Pump motor starter	
08	Pump motor power supply cable	
09	Pump motor	
10	Wheel drive motor starter	
11	Wheel drive motor power supply cable	
12	Wheel drive motor	
13	PCB relays power supply transformer	
14	PCB microcontroller power supply transformer	
15	Fuse: 1A-gGidL	
16	Main powerbox diagnostic cable	
17	U6 connector on PCB (PHOENIX CONTACT MSTB 5-ways)	
18	PCB relays power supply cable	
19	U10 connector on PCB (TYCO AMP MODU I 4-ways)	
20	PCB microcontroller power supply cable	
21	U2 connector on PCB (TYCO AMP MODU II 4-ways)	
22	Main powerbox control cable	
23	U5 connector on PCB (TYCO AMP MODU I 6-ways)	
24	Solenoid valve 1 control cable	
25	Solenoid valve 2 control cable	
26	Solenoid valve 2	
27	Solenoid valve 1	
28	U7 connector on PCB (TYCO AMP MODU I 2-ways)	
29	Proximity sensor	
30	Proximity sensor cable	
31	U5 connector on PCB (PHOENIX CONTACT MSTB 2-ways)	
32	Main powerbox	
33	Grounding terminal on PCB	



Nr.	Description
01	Main cable
02	Main grounding terminal
03	Main switch
04	Main powerbox power supply cable
05	Main powerbox grounding terminal
06	Power distribution box
07	Pump motor starter
08	Pump motor power supply cable
09	Pump motor
10	Water heater starter
11	Water heater power supply cable
12	Water heater motor
13	Wheel drive motor
14	PCB microcontroller power supply transformer
15	Fuse: 1A-gGdL
16	Main powerbox diagnostic cable
17	J6 connector on PCB (PHOENIX CONTACT MSTB 5-ways)
18	PCB relate power supply cable
19	J1 connector on PCB (TYCO AMP. MODU I 4-ways)
20	J2 connector on PCB (TYCO AMP. MODU I 4-ways)
21	J2 connector on PCB (TYCO AMP. MODU II 4-ways)
22	Main powerbox control cable
23	J8 connector on PCB (TYCO AMP. MODU I 6-ways)
24	Solenoid valve 1 control cable
25	Solenoid valve 1
26	Solenoid valve 2 control cable
27	Solenoid valve 2
28	J7 connector on PCB (TYCO AMP. MODU I 2-ways)
29	Proximity sensor
30	Proximity sensor cable
31	J5 connector on PCB (PHOENIX CONTACT MSTB 2-ways)
32	Main powerbox
33	Grounding terminal on PCB
34	Water heater powerbox power supply cable
35	Water heater powerbox grounding terminal
36	Water heater starter
37	Water heater power supply cable
38	Water heater
39	Water heater powerbox diagnostic cable
40	J9 connector on PCB (PHOENIX CONTACT MSTB 4-ways)
41	Water heater powerbox control cable
42	J9 connector on PCB (TYCO AMP. MODU I 0-ways)
43	Water temperature probe cable
44	J3 connector on PCB (PHOENIX CONTACT MSTB 2-ways)
45	Water heater powerbox





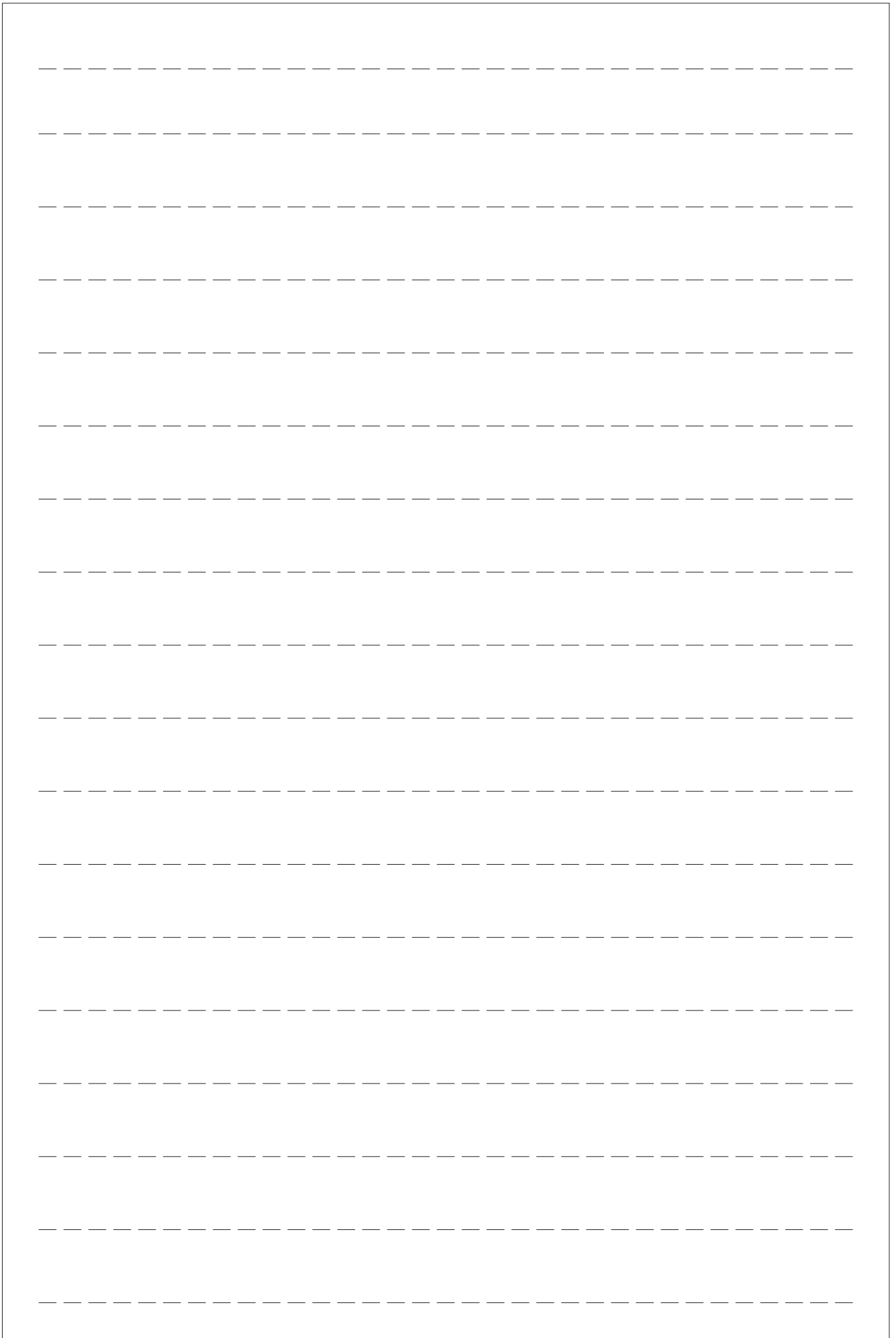
TAV M

RICAMBI CONSIGLIATI / RECOMMENDED SPARES

RS	REF	COD.	DESCRIZIONE	DESCRIPTION
RS	A14	4-602447	TUBO DI SCARICO	DRAIN PIPE
RS	A15	3-90399	COLLARE STRINGITUBO	HOSE CLAMP
RS	A16	3-90338	RESISTENZA RISCALDATORE VERS. 400V	HEATER RESISTANCE VERS. 400V
RS	A16	5-600907	RESISTENZA RISCALDATORE VERS. 230V	HEATER RESISTANCE VERS. 230V
RS	A20 / B49	4-602512	MANIGLIA COPERCHIO	HANDLE
RS	B42	4-602376	MOLLA CHIUSURA COPERCHIO	WASHING CHAMBER DOOR SPRING
RS	C10	3-90313	MOTORE 230/400-3-50/60	MOTOR 230/400-3-50/60
RS	C14	3-90312	GIUNTO ELASTICO	ELASTIC COUPLING
RS	C21	3-90309	GUARNIZIONE VRING 14X3X7	GASKET VRING 14X3X7
RS	C23	3-90310	PARAOILIO 16X35X7	GASKET 16X35X7
RS	C24	9003-90311	CUSCINETTO RADIALE	ROLLER BEARING
RS	C25	3-90308	ANELLO OR 40.87X3.53	O-RING 40.87X3.53
RS	C26	2-00838	ANELLO EL. D. 35	SEEGER D. 35
RS	C34	4-602665	RULLO DI SOSTEGNO LATERALE	LATERAL ROLLER
RS	C76	3-90330	ELETTROVALVOLA 5/2 ML G1/4	DRYING ELECTROVALVE UNIT
RS	#5 C76	3-90491	ELETTROVALVOLA 5/3 CC G1/4	DRYING ELECTROVALVE UNIT
RS	C77	3-90331	BOBINA ELETTROVALVOLA	ELECTROVALVE
RS	C89	4-602656	SEMIRULLO DI TRASCINAMENTO	WHEEL DRIVING HALF-ROLLER
RS	D01	5-600601C	PANNELLO COMANDO COMPLETO	COMPLETE CONTROL PANEL
RS	E08	5-600622	SENSORE DI PROSSIMITA'	PROXIMITY SENSOR
RS	F14	5-600559	AVVIAT. ELETTR. - VERS. 400-3-50 5,5kW	PUMP STARTER - VERS. 400-3-50 5,5kW
RS	F14	5-600732	AVVIAT. ELETTR. - VERS. 230-3-60 5,5kW	PUMP STARTER - VERS. 230-3-60 5,5kW
RS	F15	5-600562	AVVIATORE TRASCIN. - VERS. 400-3-50 5,5kW	DRIVE STARTER - VERS. 400-3-50 5,5kW
RS	F15	5-600733	AVVIATORE TRASCIN. - VERS. 230-3-60 5,5kW	DRIVE STARTER - VERS. 230-3-60 5,5kW
RS	F19	5-600586A	AVVIATORE RISCALD. - VERS. 400-3-50 5,5kW	HEATER STARTER - VERS. 400-3-50 5,5kW
RS	F19	5-600734A	AVVIATORE RISCALD. - VERS. 230-3-60 5,5kW	HEATER STARTER - VERS. 230-3-60 5,5kW
RS= RICAMBI CONSIGLIATI / RECOMMENDED SPARES				

AGGIORNAMENTI / UPDATE:

#5: dalla matricola / from serial number 130360596





Automotive Equipment

Teco Srl - Via Pio La Torre, n°10
42015 Correggio (RE) Italy
www.teco.it - www.tecoautomotive.com
www.youtube.com/user/TECOsrl

Telephone: +39.0522.631562

Fax: +39.0522.642373

E-mail: teco@teco.it